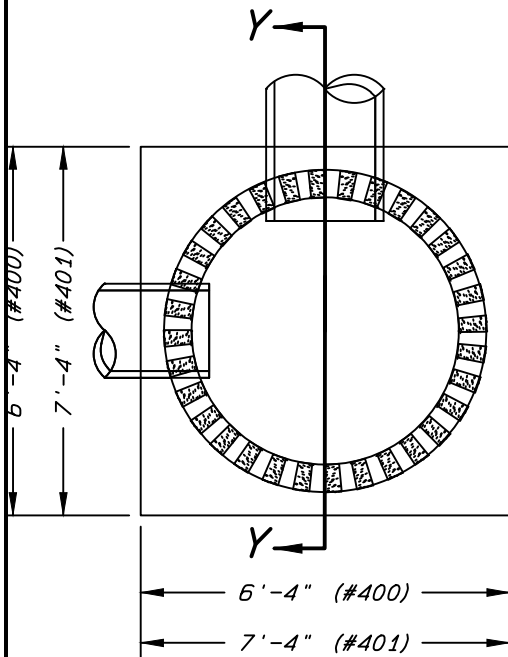


**SECTION ON CENTERLINE**



**SECTION X-X**

**NOTES:**

THIS STANDARD DRAWING APPLIES TO BOTH BRICK AND PRECAST CONCRETE MANHOLES.

COG STD. #400 MANHOLE IS FOR PIPE SIZES 12" THRU 30" (DIA.) .

COG STD. #401 MANHOLE IS FOR PIPE SIZES 36" & 42" (DIA.) .

FOR PIPE SIZES 48" DIA. OR LARGER, BRICK OR PRECAST CONCRETE MANHOLES ARE TO BE OF ADEQUATE DIAMETER TO ACCEPT THE PIPE SIZES. CALLOUT THE DIAMETER ON THE PLAN & PROFILE DWG.

WITHIN THE RIGHT OF WAY, BRICK CORBELLING OR PRECAST CONCRETE CONE SECTIONS ARE TO BE USED. FLAT TOP MANHOLES ARE NOT ALLOWED IN THE RIGHT OF WAY. OUTSIDE THE RIGHT OF WAY, FLAT TOPS ARE ALLOWED ONLY IF NECESSARY BECAUSE OF UNAVOIDABLE SHALLOW PIPE DEPTH.

COG STD #413 RING AND COVERS ARE REQUIRED ON ALL MANHOLES ON PUBLIC LINES.

ALL MORTAR JOINTS ARE TO BE 1/2" +/- 1/8" .

CONCRETE IS TO BE CLASS B, 2500 PSI FOR BASE.

JUMBO BRICK WILL BE PERMITTED. CONCRETE BRICK OR 4" SOLID CONCRETE BLOCKS MAY BE USED IN LIEU OF CLAY BRICK.

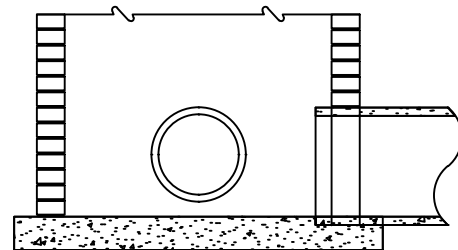
MANHOLES OVER 3'-6" IN DEPTH SHALL BE PROVIDED WITH STEPS 16" ON CENTERS. STEPS SHALL BE IN ACCORDANCE WITH COG STD. #414.

FOR MANHOLES WITH A VERTICAL WALL DEPTH LESS THAN 12'-0", BRICK MASONRY WALL THICKNESS SHALL BE 8" .

FOR MANHOLES OVER 12'-0" VERTICAL WALL DEPTH, BRICK MASONRY WALL THICKNESS SHALL BE 1'-0" BEGINNING AT 12'-0" DEPTH.

WHEN CONSTRUCTING THIS STRUCTURE OVER AN EXISTING PIPE LINE, SAW CUT AND REMOVE A SECTION OF PIPE EQUAL TO THE INSIDE DIAMETER OF THE STRUCTURE. POUR A NEW BOTTOM AS SHOWN AND CONSTRUCT THE NEW STRUCTURE. NEW STRUCTURES ARE NOT TO BE BUILT ON TOP OF THE PIPE.

SPECIAL SITUATIONS OTHER THAN DESCRIBED ON THIS DRAWING ARE TO BE APPROVED BY THE STORMWATER MANAGEMENT DIVISION OR THE ENGINEERING DIVISION.



**PART SECTION Y-Y**

**CITY OF GREENSBORO**

**BRICK MASONRY STORM  
SEWER MANHOLE**

STD. NO.	REV.
400 401	09-95 06-07
	06-99 08-14
	08-02