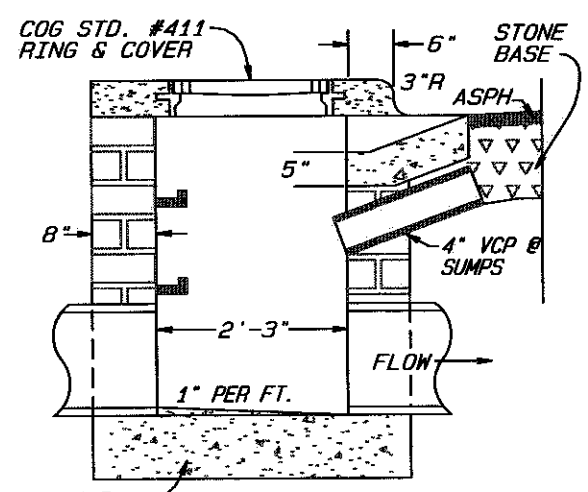
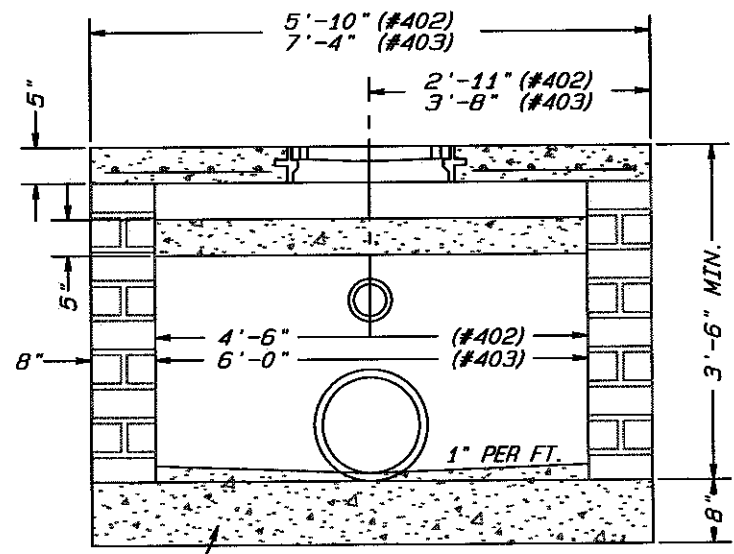
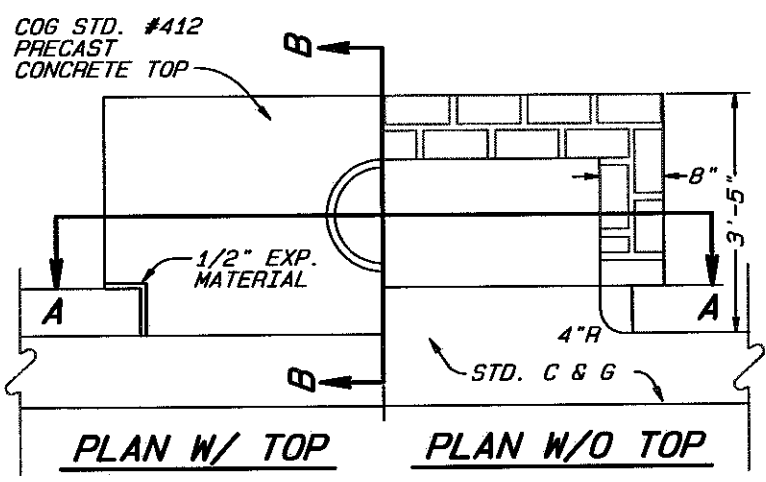


**NOTES:**  
 ALL MORTAR JOINTS ARE TO BE  $1/2" \pm 1/8"$ .  
 BRICK MASONRY CAN BE STANDARD CLAY BRICK, JUMBO BRICK OR CONCRETE BRICK.  
 FOR DEPTHS OVER 3'-6" USE STEPS ON 16" CENTERS. STEPS SHALL BE IN ACCORDANCE WITH COG STD. #414.

WHEN CONSTRUCTING THE STRUCTURE OVER AN EXISTING PIPE LINE, SAW CUT AND REMOVE A SECTION OF PIPE EQUAL TO THE INSIDE DIAMETER OF THE STRUCTURE. POUR A NEW BOTTOM AS SHOWN AND CONSTRUCT THE NEW STRUCTURE. NEW STRUCTURES ARE NOT TO BE BUILT ON TOP OF THE PIPE.

THIS STANDARD DRAWING ALSO APPLIES TO PRECAST CONCRETE CURB INLETS. THE USE OF PRECAST CONCRETE INLETS IS SUBJECT TO THE "POLICY STATEMENT FOR THE USE OF PRECAST CONCRETE DRAINAGE STRUCTURES IN CITY MAINTAINED STORM SEWER SYSTEMS" AVAILABLE IN THE REVISED "2007 STORM DRAINAGE DESIGN MANUAL" ON THE STORMWATER MANAGEMENT WEBSITE.

FOR PRECAST CONCRETE MODELS OF THIS STRUCTURE, THE MANUFACTURER SHALL STAMP OR STENCIL ITS LOGO OR NAME ON THE INSIDE AND OUTSIDE OF THE STRUCTURE.



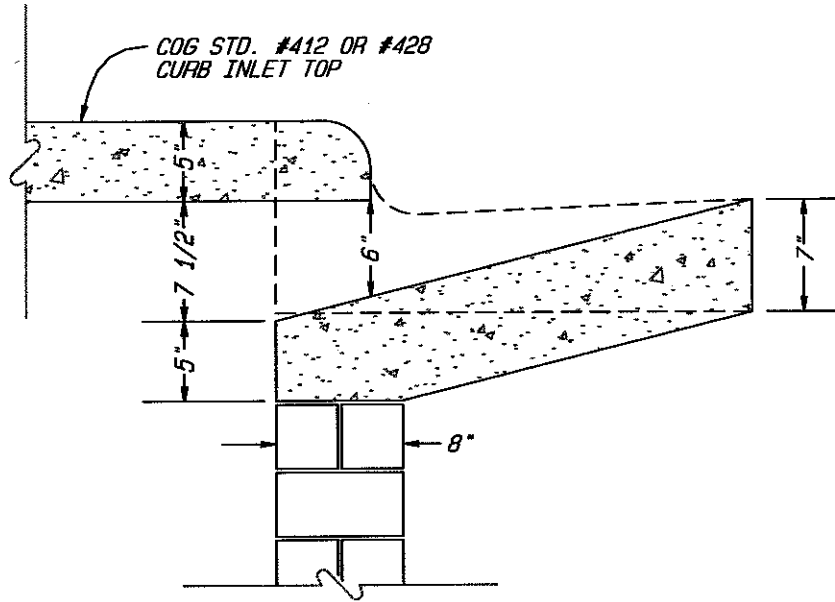
**SECTION A-A**

**SECTION B-B**

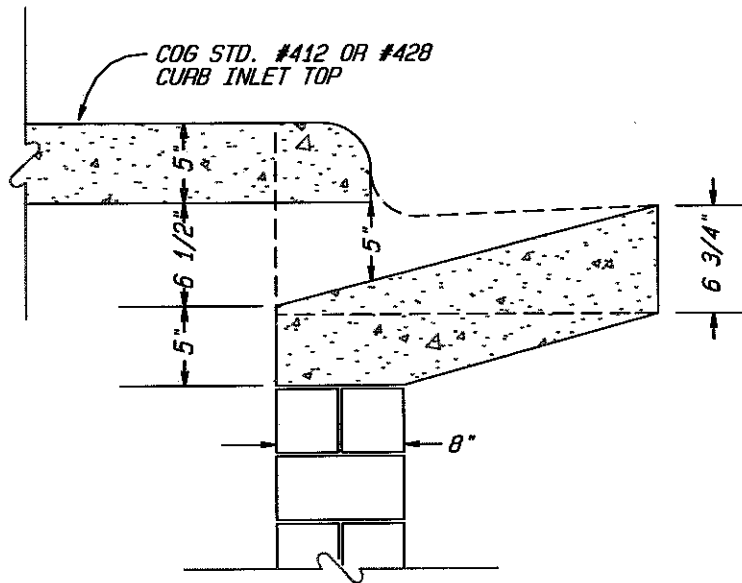
**CITY OF GREENSBORO**

**STANDARD BRICK MASONRY CURB INLET**

STD. NO.	REV.
402	06-99 12-07
403	08-02 3-08
	06-07 12-09



**STANDARD CURB INLET THROAT**  
**FOR 2'-6" CURB & GUTTER**



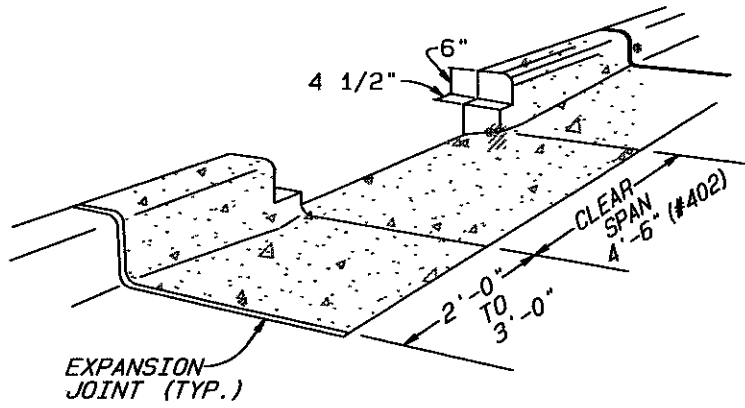
**STANDARD CURB INLET THROAT**  
**FOR 2'-0" CURB & GUTTER**

**CITY OF GREENSBORO**

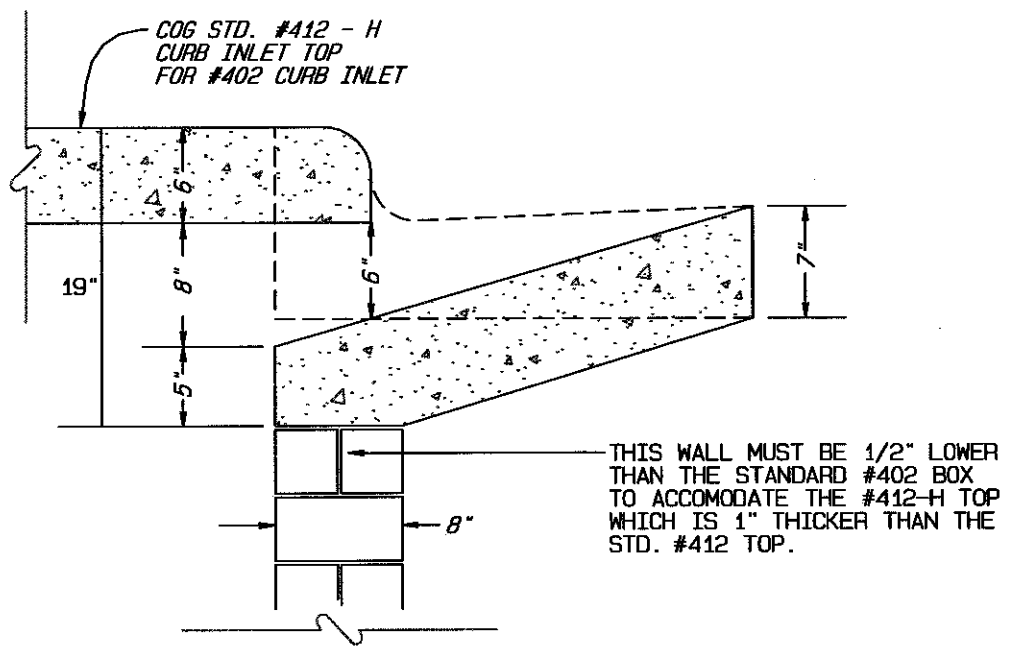
**STANDARD BRICK MASONRY  
CURB INLET (THROAT)**

STD. NO.	REV.
402	06-99 12-07
403	08-02 3-08
	06-07 12-09

**REQUIRED MODIFICATIONS TO COG #402 CURB INLET TO ACCOMODATE COG #412-H TOP**



**CURB NOTCH MODIFICATIONS FOR 412-H TOP**



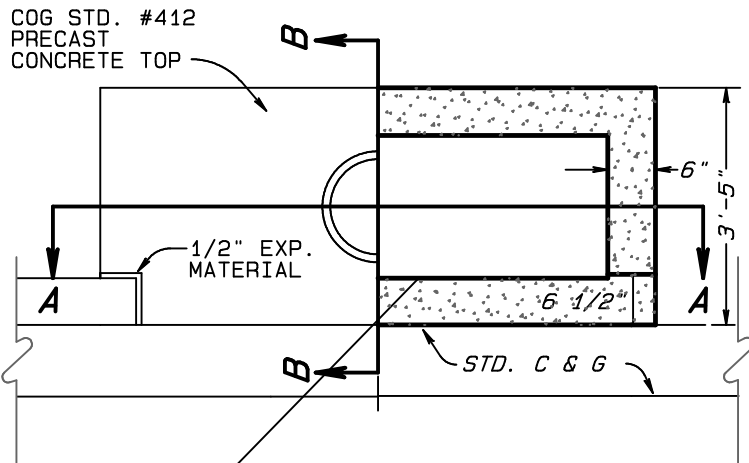
**#402 CURB INLET THROAT MODIFICATIONS TO ACCOMODATE THE #412-H TOP**

412-H IS FOR USE AT COMMERCIAL AND INDUSTRIAL INTERSECTIONS WHERE THERE IS THE POTENTIAL FOR HEAVY TRUCK TRAFFIC. BECAUSE OF THE THICKER TOP, THIS DETAIL SHOWS MODIFICATIONS THAT MUST BE MADE TO STD. #402 AND CURB AND GUTTER TO ACCOMODATE THE THICKER TOP.

**CITY OF GREENSBORO**

**STANDARD BRICK MASONRY CURB INLET (THROAT)**

STD. NO.	REV.
402	06-99 12-07
403	08-02 3-08
	06-07 12-09



WHEN INSTALLING THE INLET BOX, THE INSIDE FACE OF THE FRONT WALL IS TO LINE UP WITH THE BACK OF CURB.

NOTES:

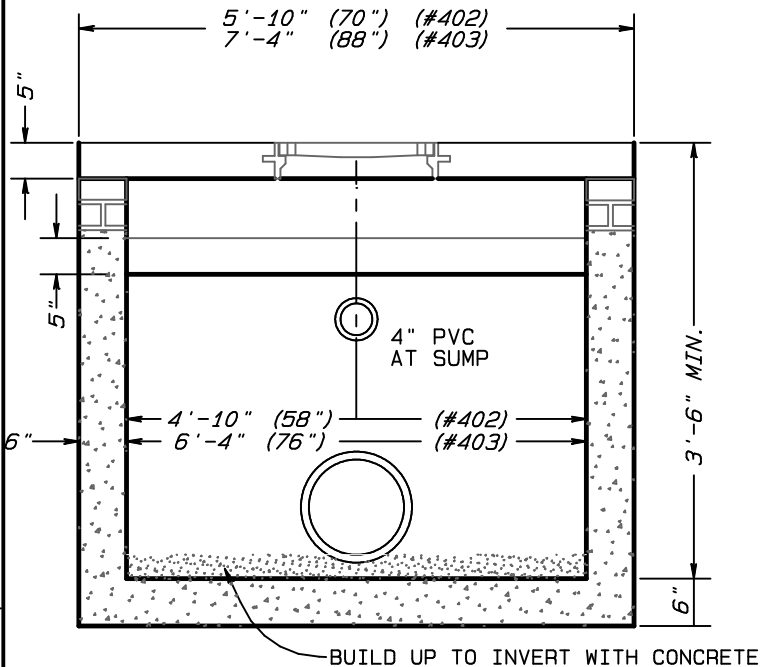
THE USE OF PRECAST CONCRETE CURB INLETS IS SUBJECT TO THE "POLICY STATEMENT FOR THE USE OF PRECAST CONCRETE DRAINAGE STRUCTURES IN CITY MAINTAINED STORM DRAINAGE SYSTEMS" AVAILABLE IN THE REVISED "2007 STORM DRAINAGE DESIGN MANUAL" ON THE STORMWATER MANAGEMENT WEBSITE.

CONSTRUCTION AND USE OF PRECAST CONCRETE STRUCTURES SHALL ADHERE TO ALL PERTINENT REQUIREMENTS OF THE STANDARD #402/403 BRICK MASONRY STRUCTURES.

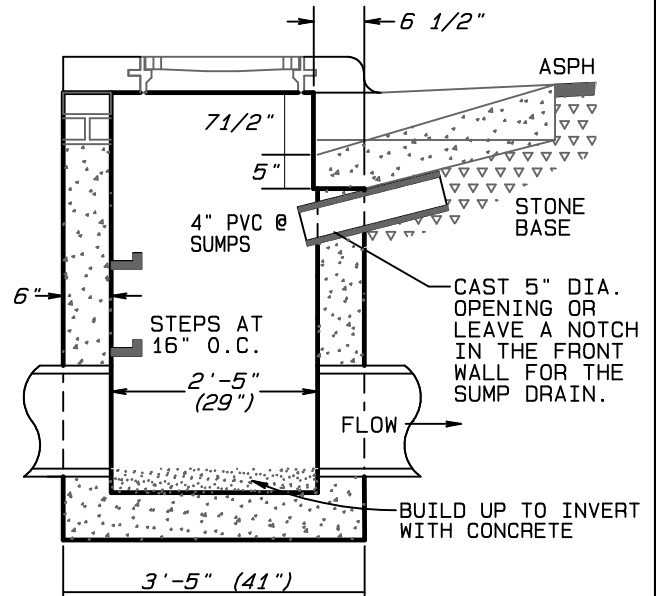
STEEL DESIGN IS NOT SHOWN ON THIS DRAWING. STEEL DESIGN IS THE RESPONSIBILITY OF THE MANUFACTURERS ENGINEER AND SHALL BE SHOWN ON SEALED SHOP DRAWINGS SUBMITTED FOR APPROVAL FOR USE IN THE CITY OF GREENSBORO DRAINAGE INFRASTRUCTURE.

FOR PRECAST CONCRETE MODELS OF THIS STRUCTURE, THE MANUFACTURER SHALL STAMP OR STENCIL ITS LOGO OR NAME ON THE INSIDE AND OUTSIDE OF THE STRUCTURE.

PRECAST STRUCTURE SHOULD BE SET APPROXIMATELY 2 FT LOW AND BROUGHT UP TO FINAL GRADE USING BRICK MASONRY.



SECTION A-A



SECTION B-B

**CITY OF GREENSBORO**

**STANDARD PRECAST CONCRETE CURB INLET**

STD. NO.	REV.
402	06-99 12-07
403	08-02 3-08
	06-07 12-09