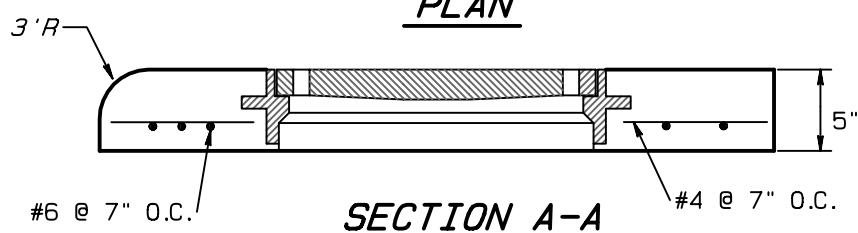


SECTION B-B

PLAN



SECTION A-A

- NOTES:**
1. CONCRETE: 28 DAY COMPRESSIVE STRENGTH $f'c = 4,500$ psi
 2. REINFORCING: ASTM A-615, GRADE 60
 3. ALL COVER TO REINFORCING IS 1"
 4. ALL STEEL CUT OUT FOR OPENINGS WILL BE REPLACED, 1/2 THE REINFORCING ON EACH SIDE OF OPENING.
 5. FOR COMMERCIAL AND INDUSTRIAL INTERSECTIONS USE STD. #412-H

THE MANUFACTURER SHALL STAMP OR STENCIL ITS LOGO OR NAME IN TWO LOCATIONS ON THE SIDE OR REAR EDGES OF THE TOP.

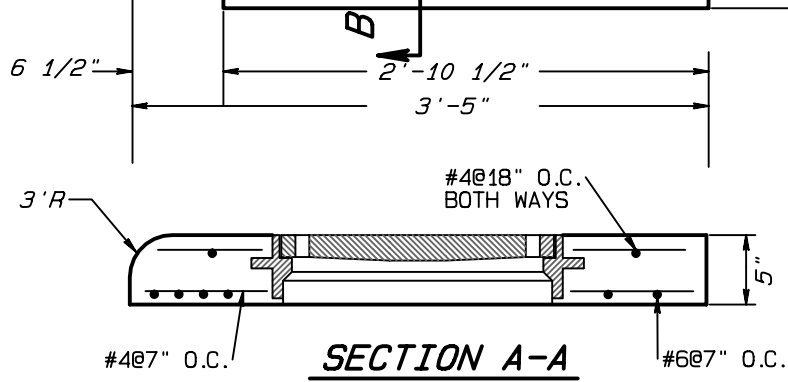
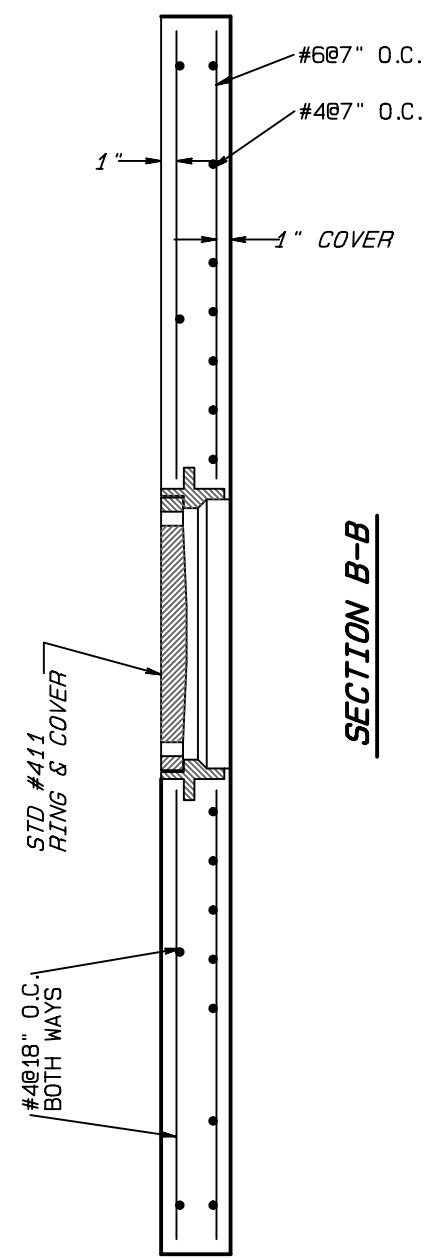
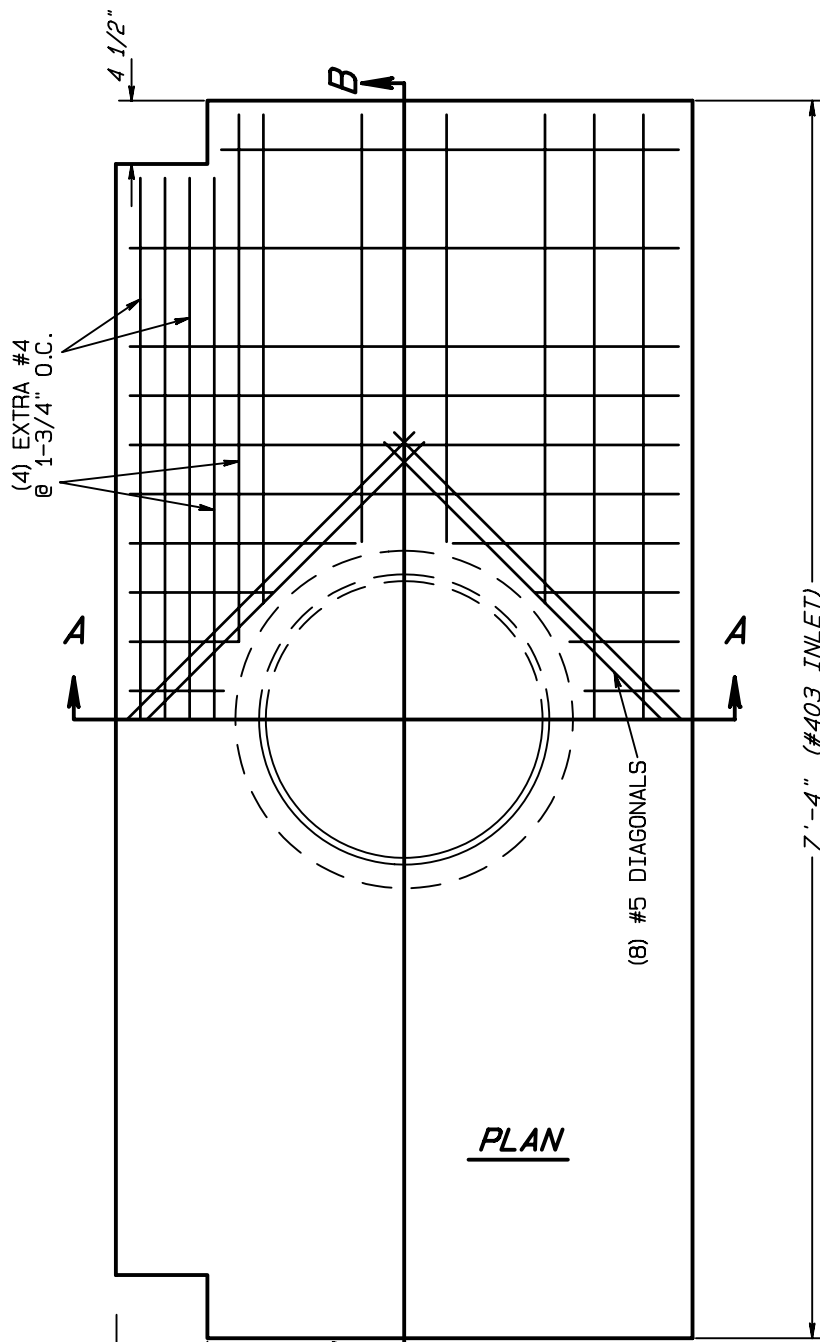
FOR USE ON #402 INLET BOX

1 OF 4

CITY OF GREENSBORO

STANDARD PRECAST CONCRETE CURB INLET TOP FOR STD. #402 CURB INLET

STD. NO.	REV.
412	12-07 03-08 08-08



- NOTES:
1. CONCRETE: 28 DAY COMPRESSIVE STRENGTH $f'c = 4,500$ psi
 2. REINFORCING: ASTM A-615, GRADE 60
 3. ALL COVER TO REINFORCING IS 1"
 4. ALL STEEL CUT OUT FOR OPENINGS WILL BE REPLACED, 1/2 THE REINFORCING ON EACH SIDE OF OPENING.
 5. FOR COMMERCIAL AND INDUSTRIAL INTERSECTIONS USE STD. #412-H.
 6. STD. #403 IS NOT ALLOWED AT COMMERCIAL AND INDUSTRIAL INTERSECTIONS.

THE MANUFACTURER SHALL STAMP OR STENCIL ITS LOGO OR NAME IN TWO LOCATIONS ON THE SIDE OR REAR EDGES OF THE TOP.

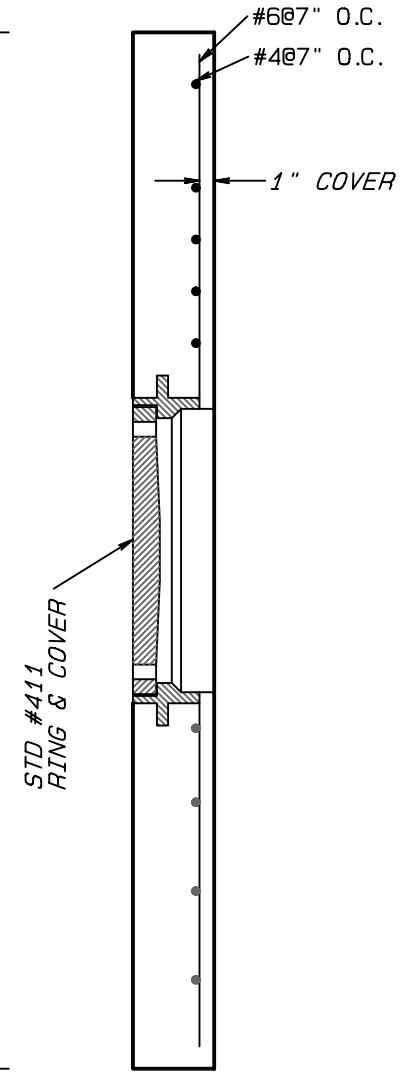
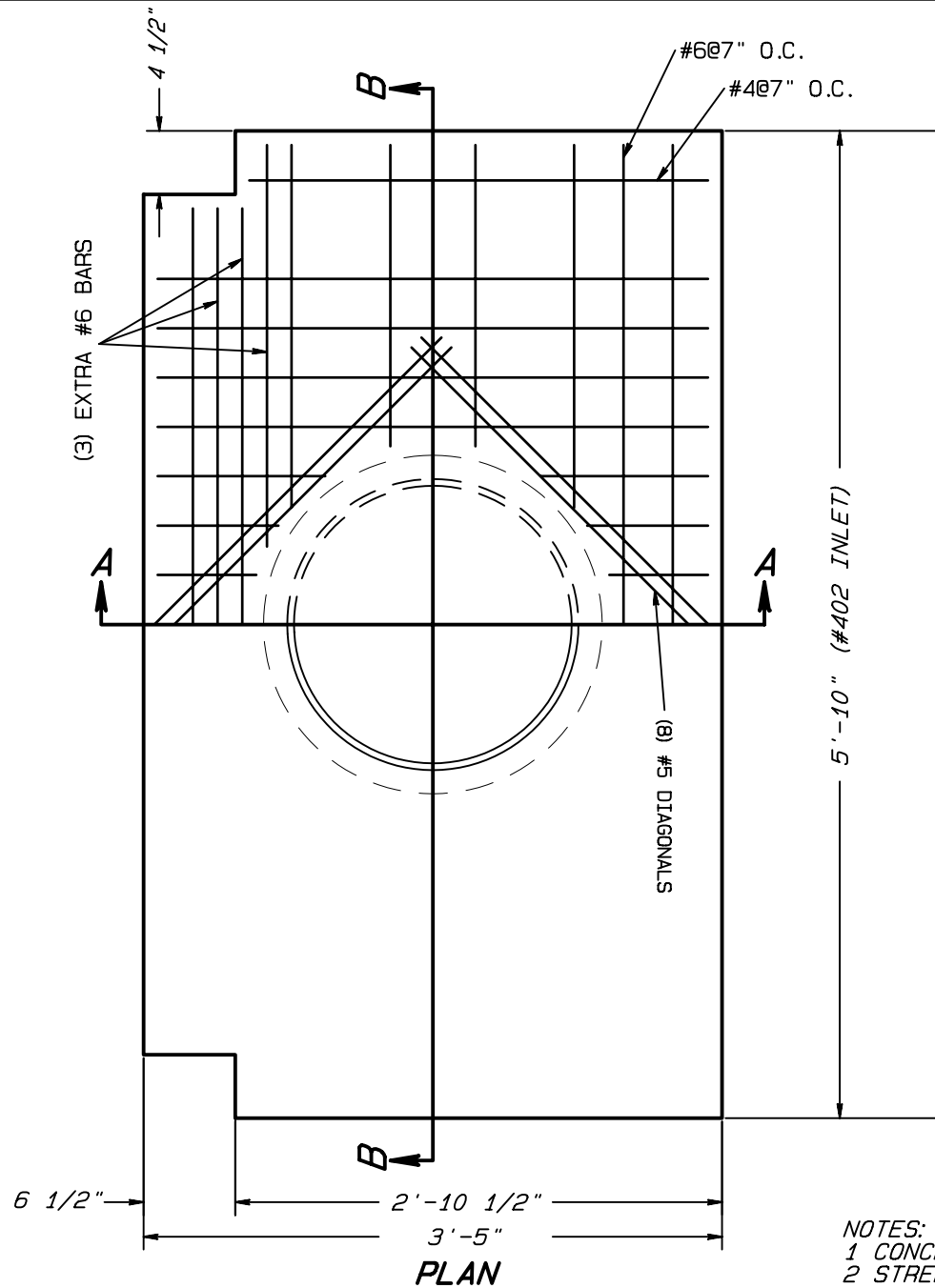
FOR USE ON #403 INLET BOX

2 OF 4

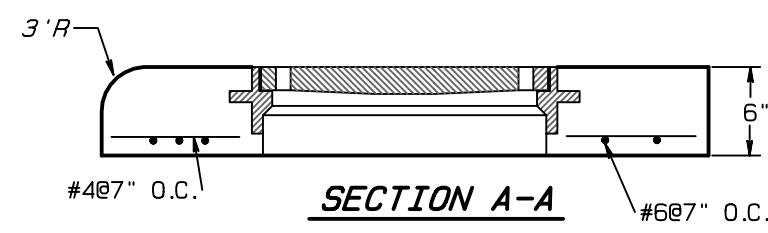
CITY OF GREENSBORO

STANDARD PRECAST CONCRETE CURB INLET TOP FOR STD. #403 CURB INLET

STD. NO.	REV.
412	12-07 03-08 08-08



SECTION B-B



SECTION A-A

- NOTES:**
- 1 CONCRETE: 28 DAY COMPRESSIVE
 - 2 STRENGTH $f'_c = 4,500$ psi
 - 3 REINFORCING: ASTM A-615, GRADE 60
 - 4 ALL COVER TO REINFORCING IS 1"
 - 5 ALL STEEL CUT OUT FOR OPENINGS WILL BE REPLACED, 1/2 THE REINFORCING ON EACH SIDE OF OPENING.
 - 6 STD #412-H IS TO BE USED AT COMMERCIAL AND INDUSTRIAL INTERSECTIONS WHERE THERE IS A POTENTIAL FOR TRUCK TRAFFIC.
 - 7 IN SOME CASES, THE INLETS WILL BE MOVED AWAY FROM THE PCR TO AVOID TRUCK TRAFFIC. LOCATION WILL BE NOTED ON THE CONSTRUCTION PLANS

THE MANUFACTURER SHALL STAMP OR STENCIL ITS LOGO OR NAME IN TWO LOCATIONS ON THE SIDE OR REAR EDGES OF THE TOP.

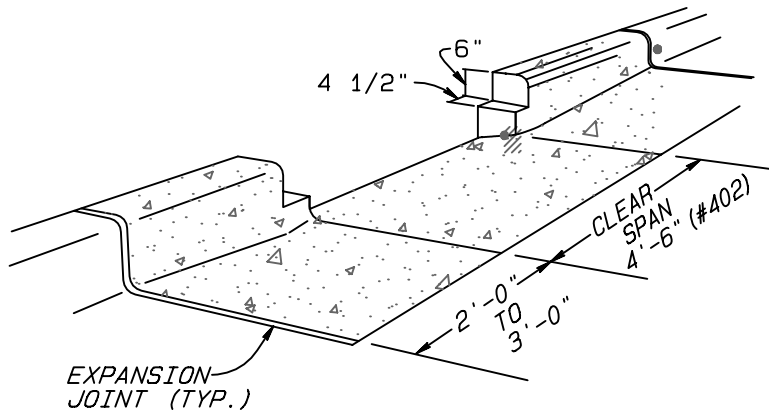
FOR USE ON #402 INLET BOX IN AREAS WHERE HEAVY TRAFFIC WILL EXIST.

CITY OF GREENSBORO

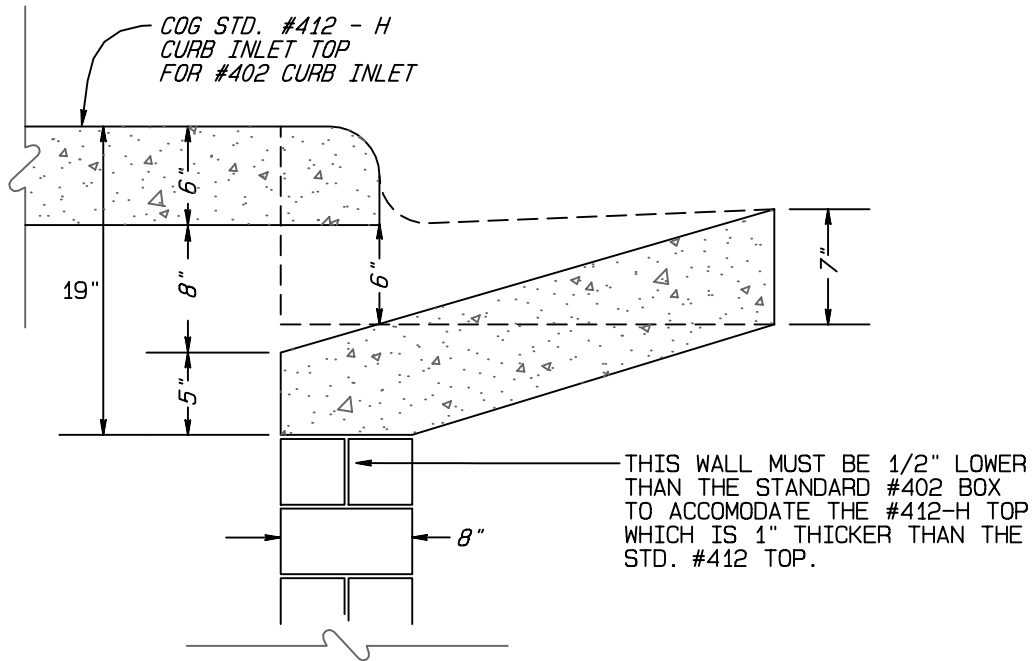
STANDARD PRECAST CONCRETE CURB INLET TOP FOR SPECIAL TRAFFIC AREAS

STD. NO.	REV.
412-H	12-07
	03-08
	08-08

REQUIRED MODIFICATIONS TO COG #402 CURB INLET TO ACCOMODATE COG #412-H TOP



CURB NOTCH MODIFICATIONS FOR 412-H TOP



#402 CURB INLET THROAT MODIFICATIONS TO ACCOMODATE THE #412-H TOP

412-H IS FOR USE AT COMMERCIAL AND INDUSTRIAL INTERSECTIONS WHERE THERE IS THE POTENTIAL FOR HEAVY TRUCK TRAFFIC. BECAUSE OF THE THICKER TOP, THIS DETAIL SHOWS MODIFICATIONS THAT MUST BE MADE TO STD. #402 AND CURB AND GUTTER TO ACCOMODATE THE THICKER TOP.

CITY OF GREENSBORO

STANDARD PRECAST CONCRETE CURB INLET TOP FOR SPECIAL TRAFFIC AREAS

STD. NO.	REV.
412-H	12-07 03-08 08-08