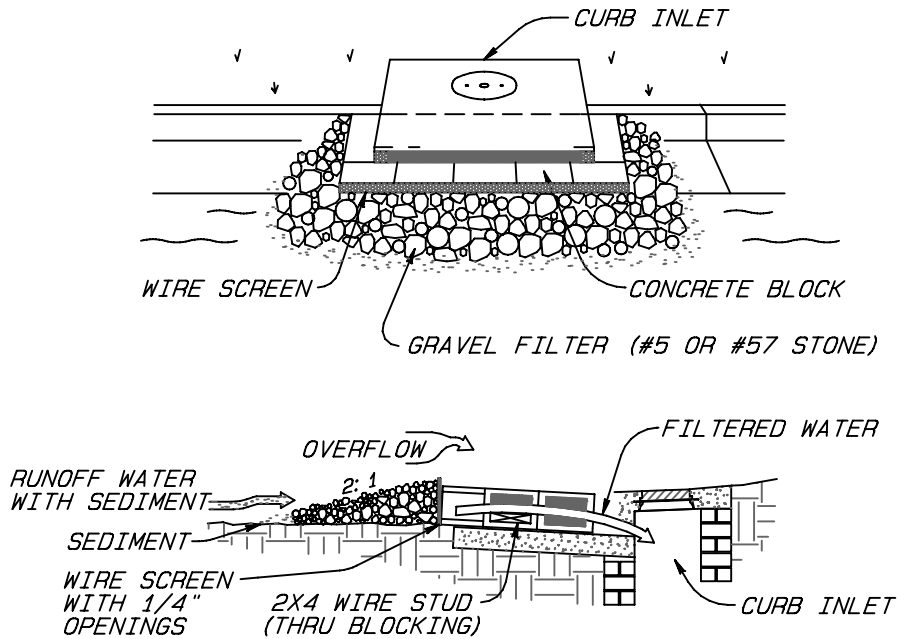


SPECIFIC APPLICATION

THIS METHOD OF INLET PROTECTION IS APPLICABLE WHERE HEAVY FLOWS ARE EXPECTED AND WHERE AN OVERFLOW CAPACITY IS NECESSARY TO PREVENT EXCESSIVE PONDING AROUND THE STRUCTURE.

BLOCK AND GRAVEL DROP INLET SEDIMENT FILTER



SPECIFIC APPLICATION

THIS METHOD OF INLET PROTECTION IS APPLICABLE AT CURB INLET WHERE AN OVERFLOW CAPACITY IS NECESSARY TO PREVENT EXCESSIVE PONDING IN FRONT OF THE STRUCTURE. MAXIMUM DRAINAGE AREA = 1 ACRE

BLOCK AND GRAVEL CURB INLET SEDIMENT FILTER

CITY OF GREENSBORO

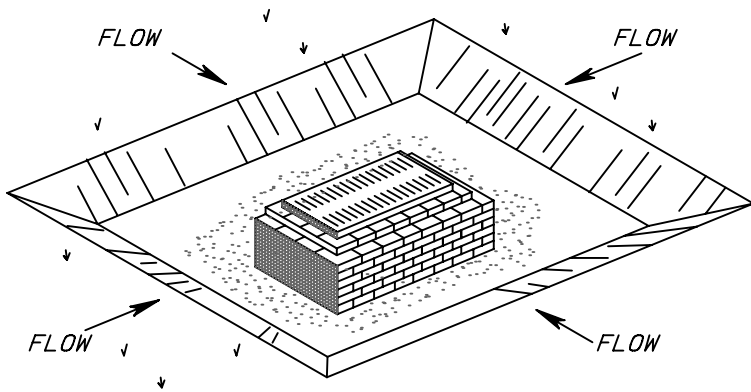
STANDARD STORMWATER INLET PROTECTION MEASURES

STD. NO.

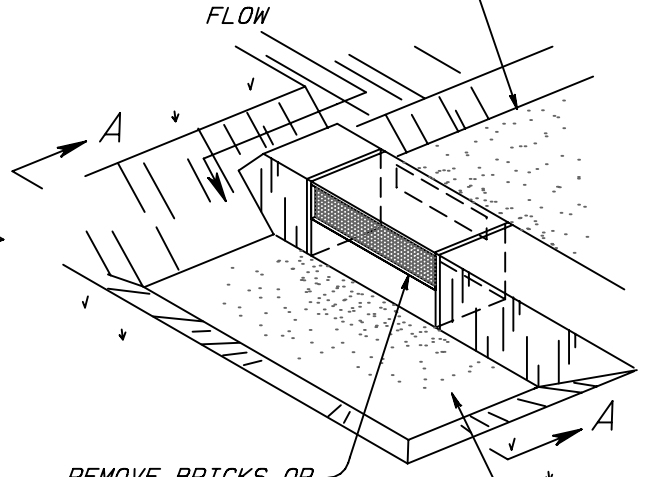
REV.

431

DEC 2006

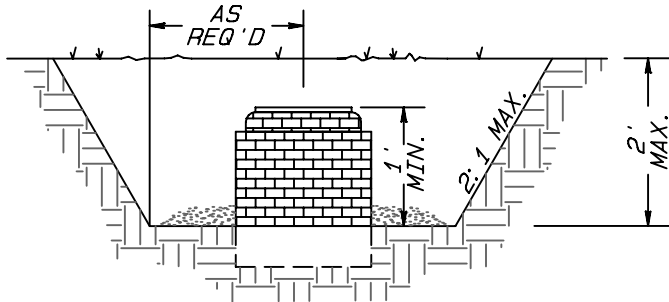


BLOCK INLET WITH PLYWOOD AND SANDBAGS, AS NECESSARY TO PREVENT WATER FROM ENTERING

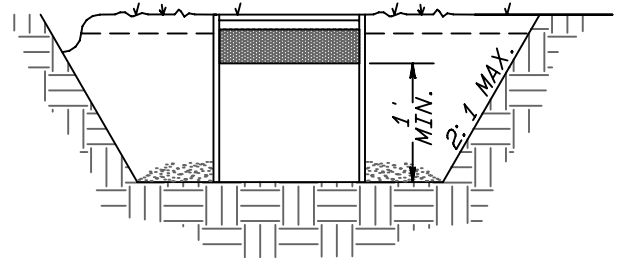


REMOVE BRICKS OR BLOCKS FOR OUTLET

TRAP MAY BE PLACED BEHIND OR AT END OF INLET



**CROSS-SECTION
YARD DRAIN**



**SECTION A-A
CURB DRAIN**

NOTE:

- WHERE CURB IS IN PLACE, PROVIDE A 1'-0" WIDE OPENING IN THE CURB OR USE A SANDBAG DAM TO FORCE WATER OVER THE CURB TO THE TRAP.
- MINIMUM STORAGE VOLUME = 1800 CU.FT PER ACRE DISTURBED WITH MAXIMUM DRAINAGE AREA OF 1 ACRE.

CITY OF GREENSBORO

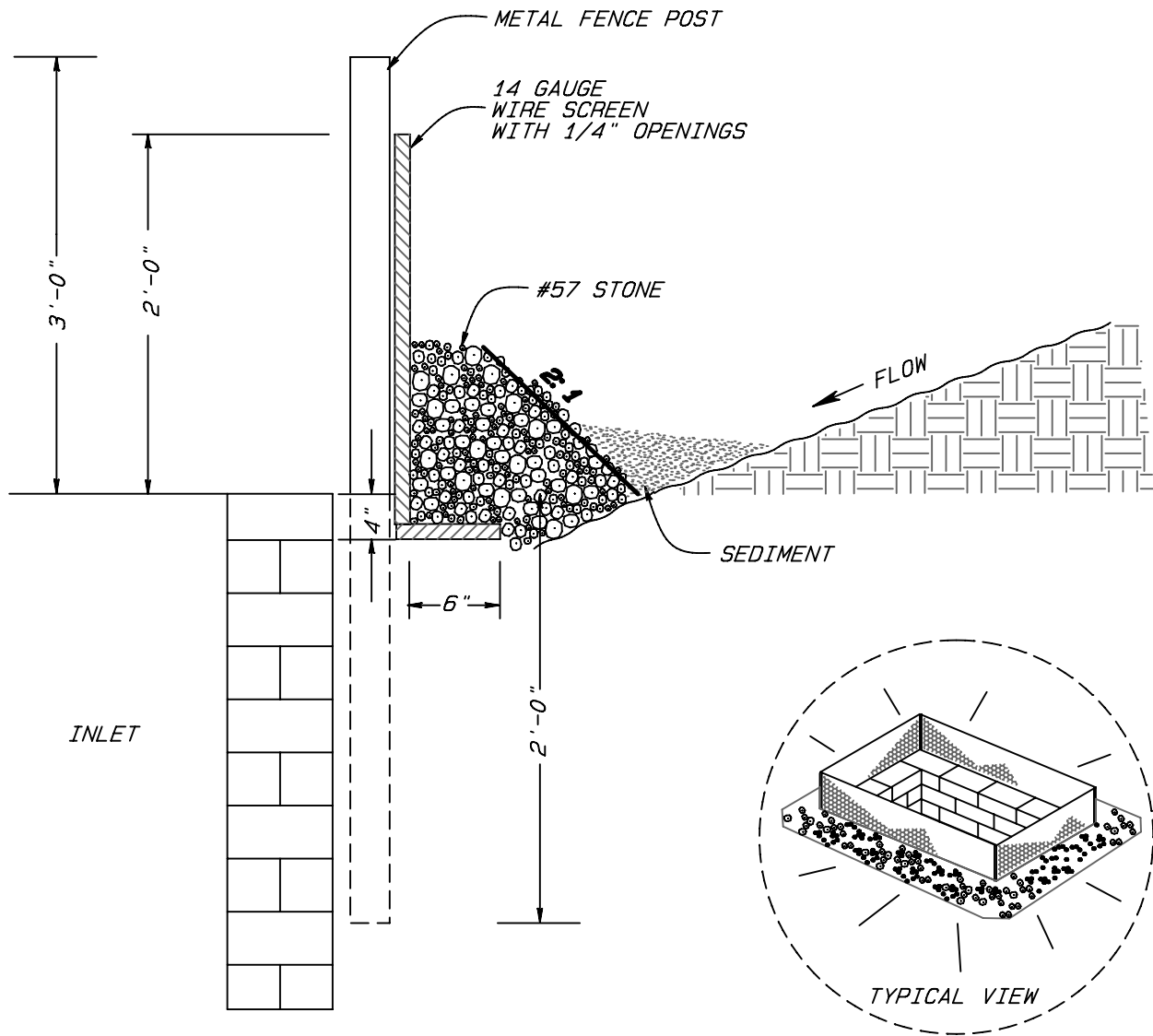
**STANDARD STORMWATER INLET
PROTECTION MEASURES**

STD. NO.

431

REV.

DEC 2006



STONE / WIRE INLET PROTECTION

NOTES:

POST TO BE SET AT EACH CORNER OF INLET. IN ANY CASE THERE IS TO BE NO MORE THAN 6'-0" BETWEEN POSTS.

POST METAL T-POST 5'-0" IN HEIGHT, 4 FT MAXIMUM SPACING

WIRE SCREEN 3'-0" IN WIDTH WITH 1/4" OPENINGS

STONE #57 STONE TO BE PLACED 16" DEEP AT WIRE SCREE

CITY OF GREENSBORO

STANDARD STORMWATER INLET PROTECTION MEASURES

STD. NO.	REV.
431	DEC 2006