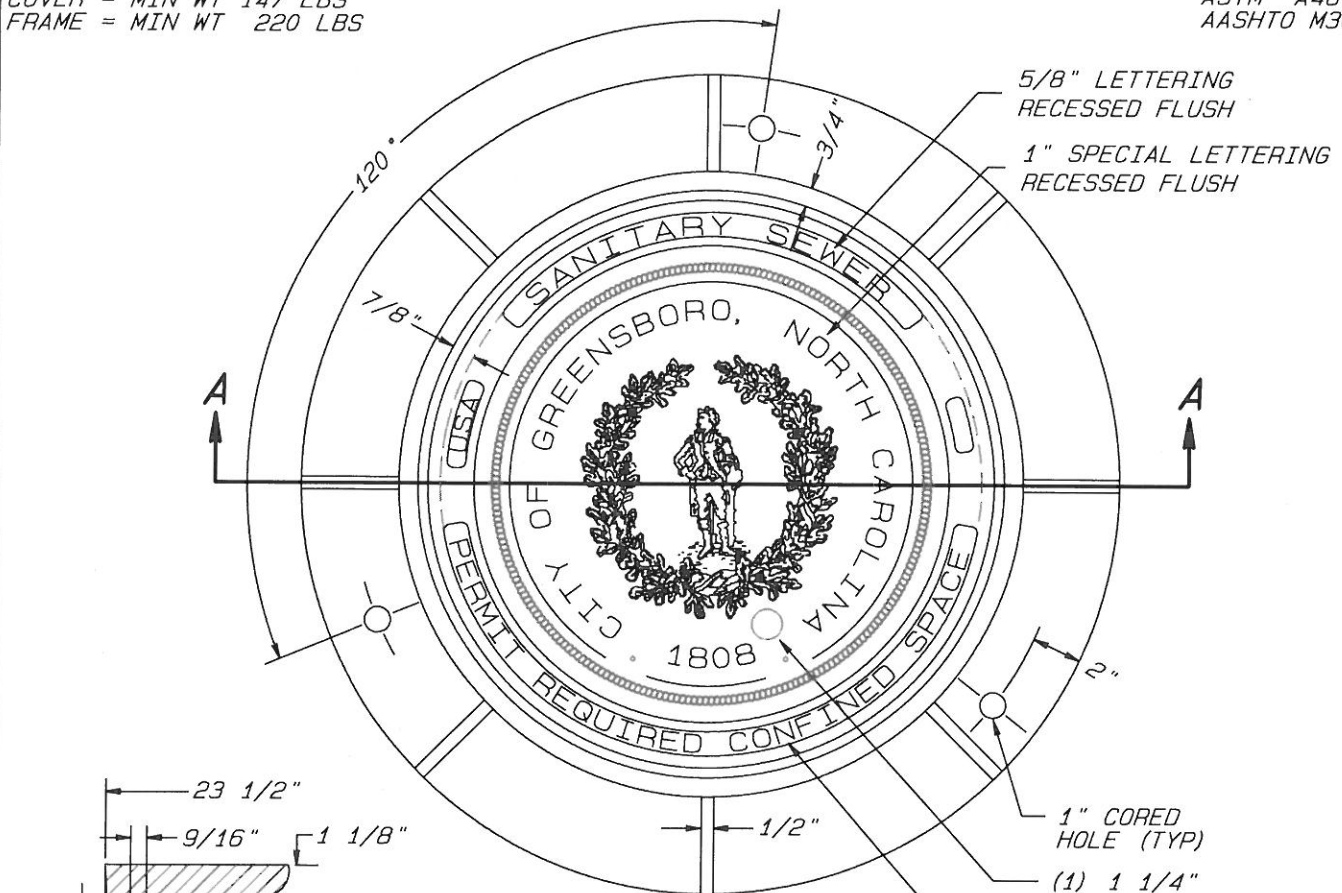


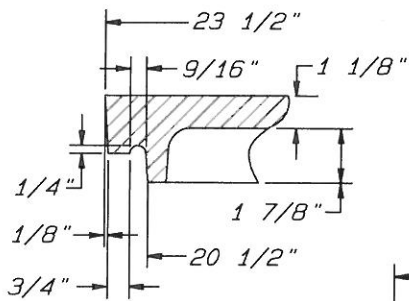
\* DIGITAL FILE 10 Jun 2013

COVER = MIN WT 147 LBS  
FRAME = MIN WT 220 LBS

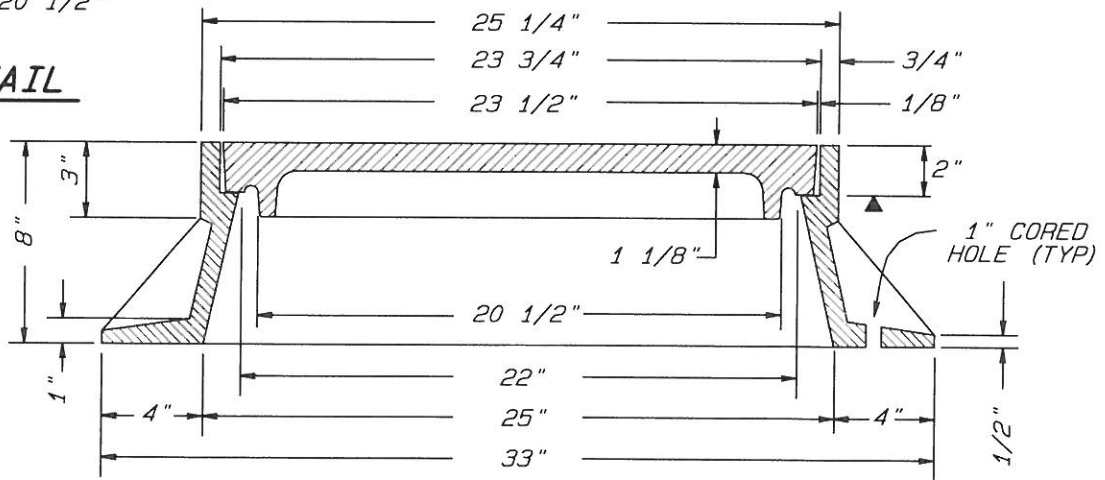
ASTM A48-CL35  
AASHTO M306



**PLAN VIEW**



**DETAIL**



**SECTION A-A**

**NOTES:**

ALL DIMENSIONS AND TOLERANCES ARE TO BE CONCENTRIC AND WILL SUPERSEDE ANY ASTM STANDARDS WITH A MAXIMUM VARIATION  $\pm 1/16$ " ON ALL DIMENSIONS.

MANHOLE RING TO BE ANCHORED WITH 1/2" REDHEAD STAINLESS STEEL ANCHORS AND SEALED BETWEEN RING AND CONE WITH BITUMASTIC SEALER.

▼ MACHINED BEARING SURFACE

**CITY OF GREENSBORO**

**STANDARD MANHOLE RING AND COVER**

STD. NO.	REV.
205	12-05 06-13

g:\Standard Drawings\sewer\c06205.pro