

NOTES:

CONCRETE SHALL BE CLASS AA, 4000 PSI AS PER ASTM C-478.

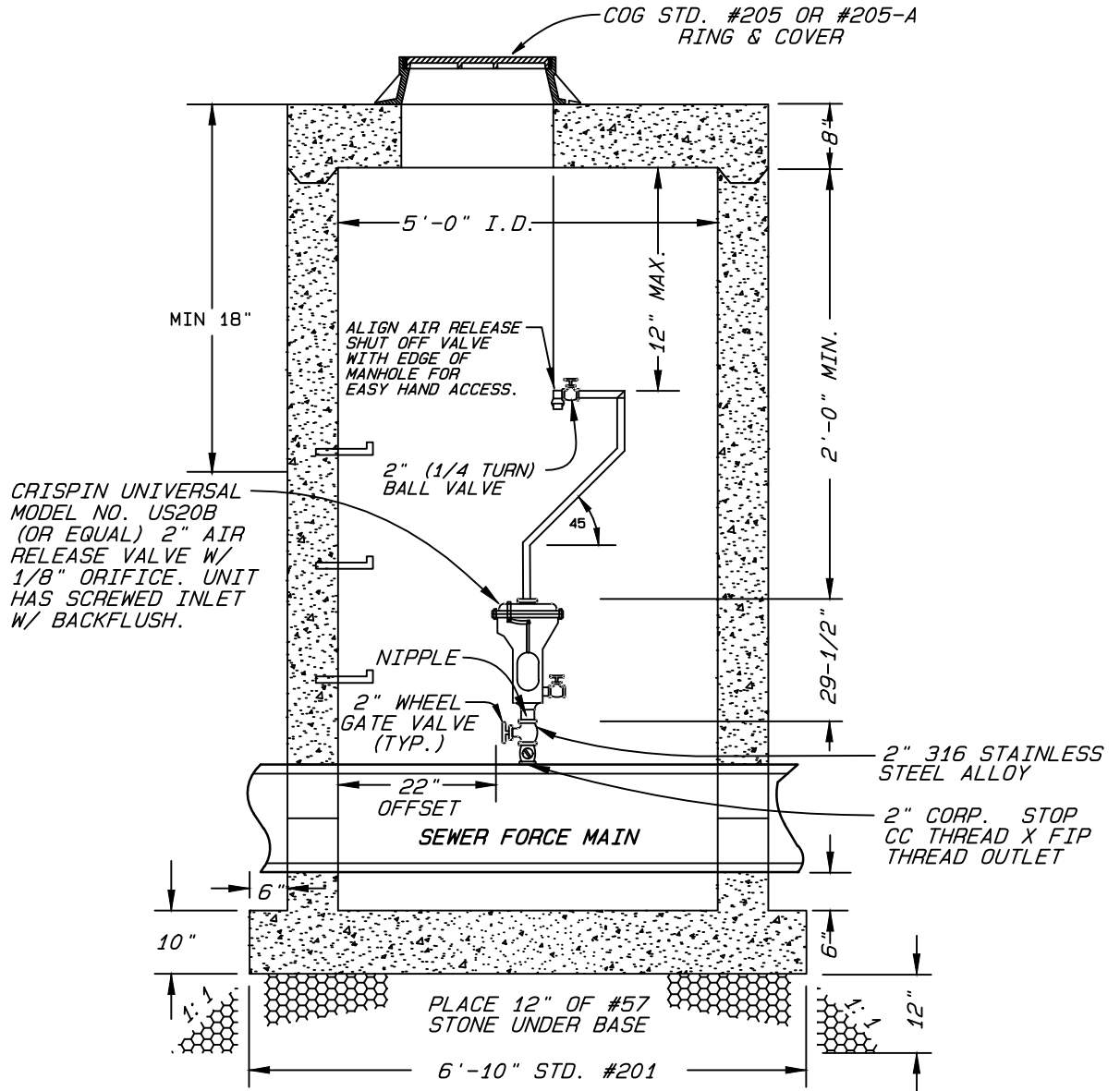
STEEL REINFORCING SHALL MEET ASTM C-185 (4" DIA) OR ASTM C-478 (5" DIA).

MANHOLES OVER 3'-6" IN DEPTH SHALL BE PROVIDED WITH STEPS 16" ON CENTERS. STEPS SHALL BE IN ACCORDANCE WITH COG STD. #206.

ON NEW INSTALLATION A MAXIMUM OF (2) GRADE RINGS CAN BE USED.

FOR FORCE MAINS LESS THAN 8" IN DIAMETER USE ROCKWELL SERVICE SADDLE 323, FORD, MUELLER, OR EQUAL.

ALL PIPE TO BE MINIMUM 2" 316 STAINLESS STEEL ALLOY AND NIPPLES TO BE 2" 316 STAINLESS STEEL ALLOY.



SECTION THRU MANHOLE

CITY OF GREENSBORO

AIR RELIEF VALVE WITH ASSEMBLY AND MANHOLE FOR SANITARY SEWER LINES

STD. NO.	REV.
211	03-03 03-22
	06-07
	03-08