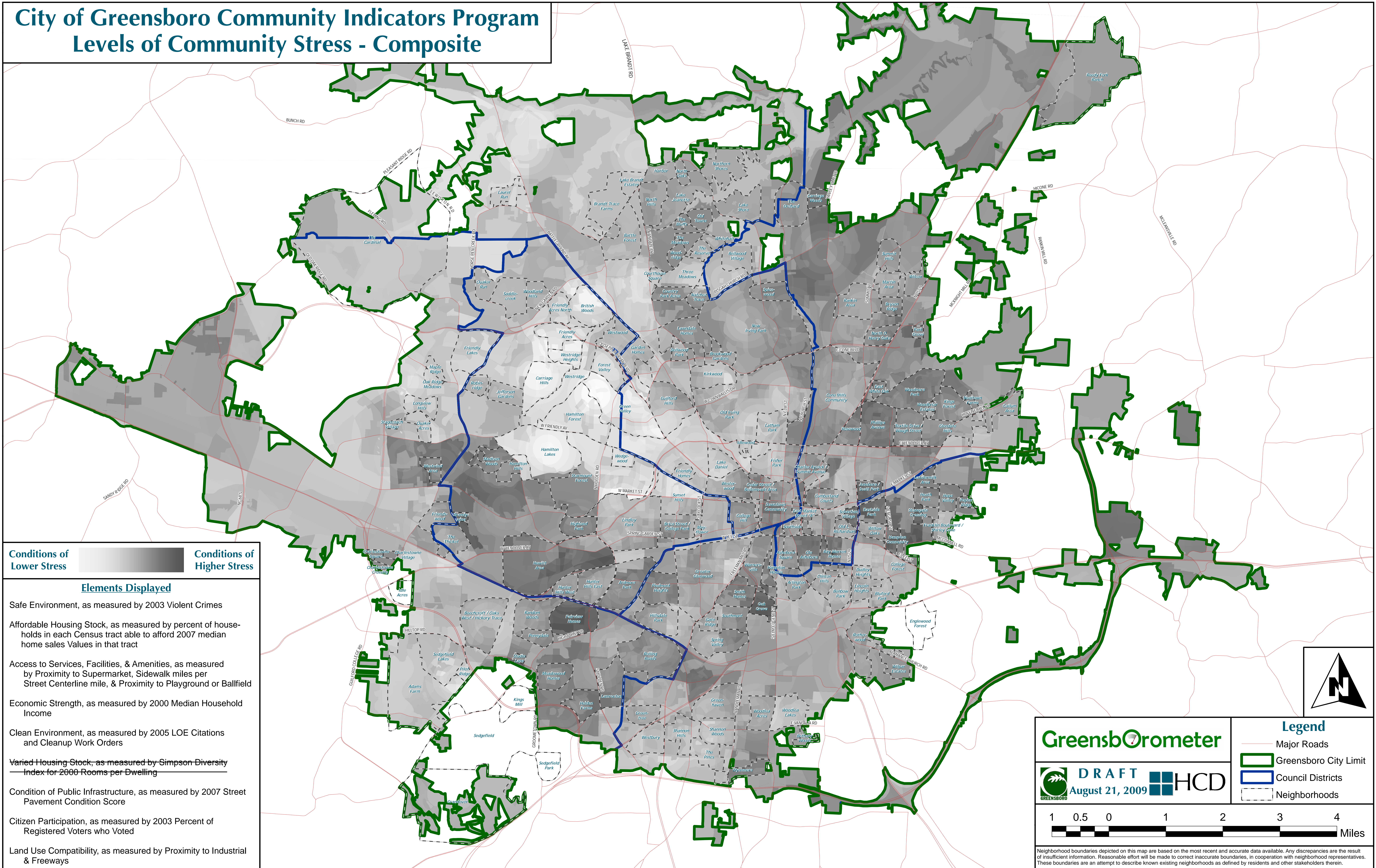


City of Greensboro Community Indicators Program

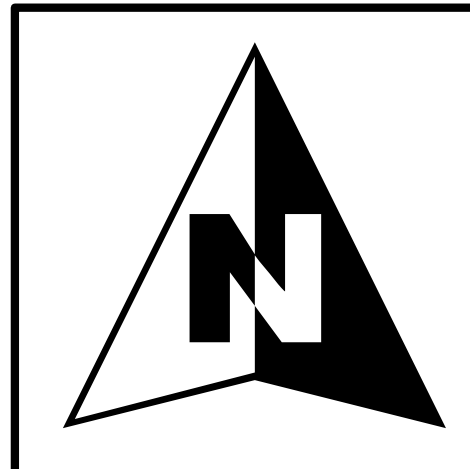
Levels of Community Stress - Composite



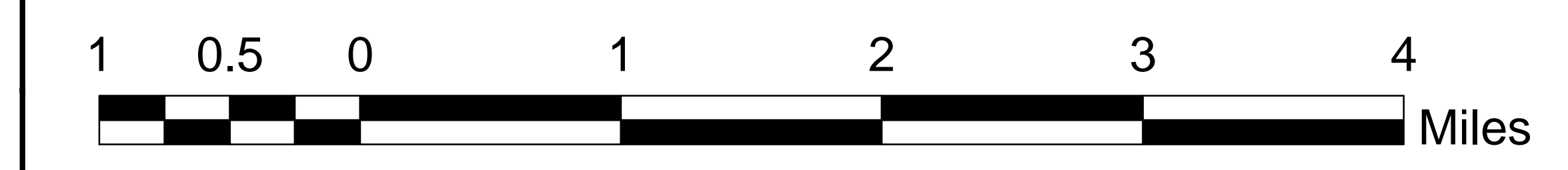
Conditions of Lower Stress Conditions of Higher Stress

Elements Displayed

- Safe Environment, as measured by 2003 Violent Crimes
- Affordable Housing Stock, as measured by percent of households in each Census tract able to afford 2007 median home sales Values in that tract
- Access to Services, Facilities, & Amenities, as measured by Proximity to Supermarket, Sidewalk miles per Street Centerline mile, & Proximity to Playground or Ballfield
- Economic Strength, as measured by 2000 Median Household Income
- Clean Environment, as measured by 2005 LOE Citations and Cleanup Work Orders
- Varied Housing Stock, as measured by Simpson Diversity Index for 2000 Rooms per Dwelling
- Condition of Public Infrastructure, as measured by 2007 Street Pavement Condition Score
- Citizen Participation, as measured by 2003 Percent of Registered Voters who Voted
- Land Use Compatibility, as measured by Proximity to Industrial & Freeways



GreensbOrometer		Legend	
DRAFT August 21, 2009		HCD	<ul style="list-style-type: none"> Major Roads Greensboro City Limit Council Districts Neighborhoods



Neighborhood boundaries depicted on this map are based on the most recent and accurate data available. Any discrepancies are the result of insufficient information. Reasonable effort will be made to correct inaccurate boundaries, in cooperation with neighborhood representatives. These boundaries are an attempt to describe known existing neighborhoods as defined by residents and other stakeholders therein.