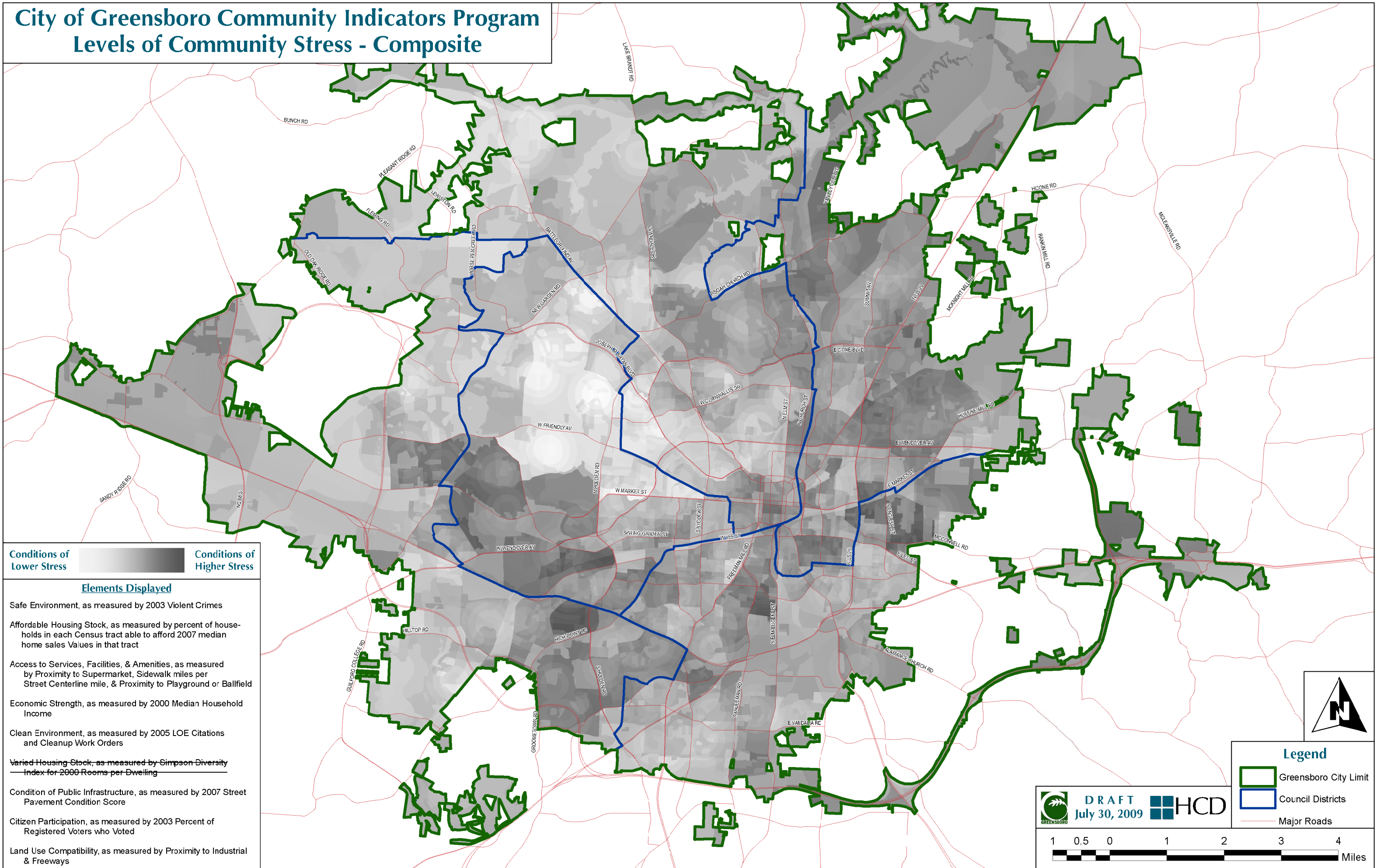


City of Greensboro Community Indicators Program

Levels of Community Stress - Composite






Conditions of Lower Stress  Conditions of Higher Stress 

Elements Displayed

- Safe Environment, as measured by 2003 Violent Crimes
- Affordable Housing Stock, as measured by percent of households in each Census tract able to afford 2007 median home sales values in that tract
- Access to Services, Facilities, & Amenities, as measured by Proximity to Supermarket, Sidewalk miles per Street Centerline mile, & Proximity to Playground or Ballfield
- Economic Strength, as measured by 2000 Median Household Income
- Clean Environment, as measured by 2005 LOE Citations and Cleanup Work Orders
- Varied Housing Stock, as measured by Simpson Diversity Index for 2000 Rooms per Dwelling
- Condition of Public Infrastructure, as measured by 2007 Street Pavement Condition Score
- Citizen Participation, as measured by 2003 Percent of Registered Voters who Voted
- Land Use Compatibility, as measured by Proximity to Industrial & Freeways



Legend

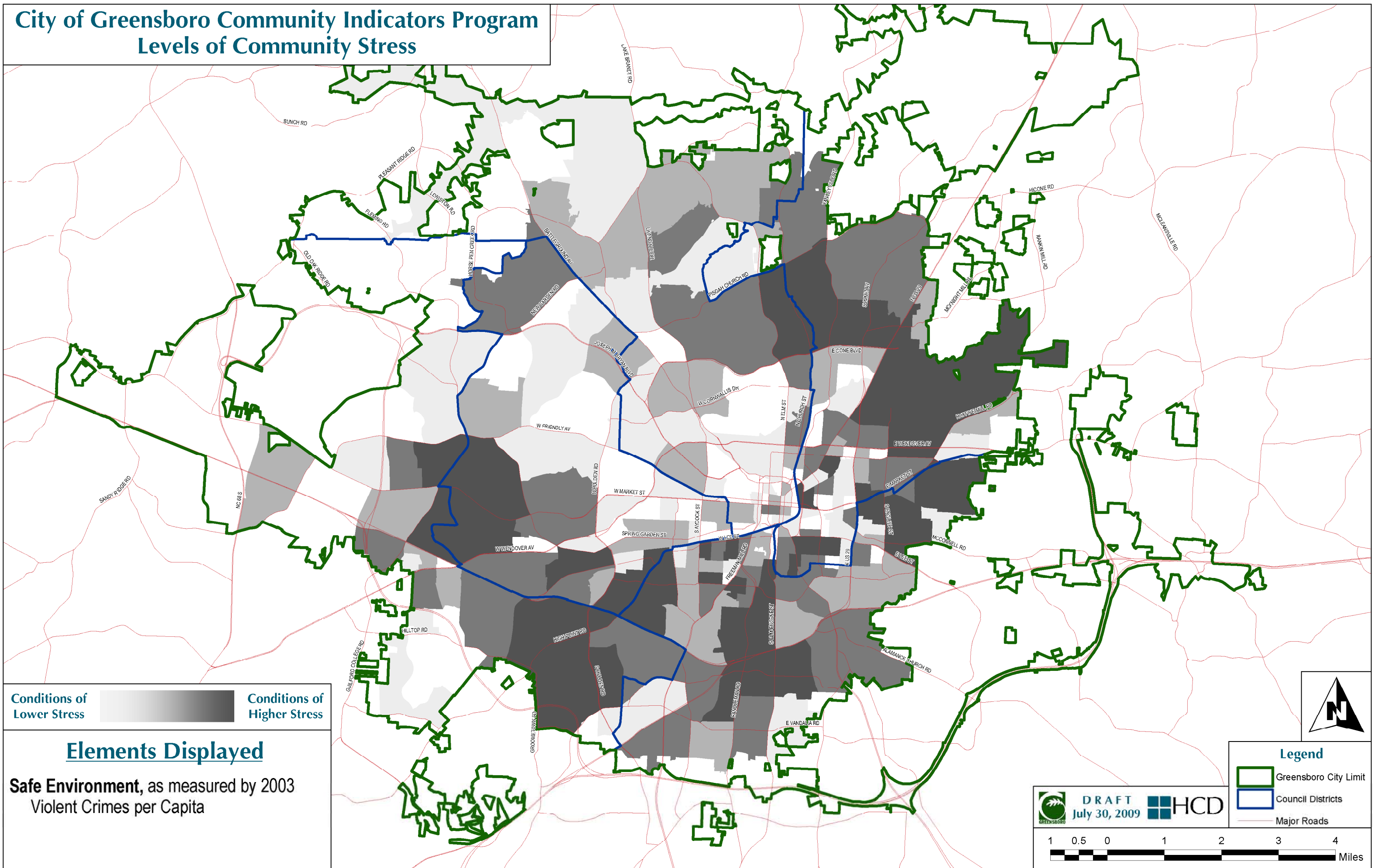
-  Greensboro City Limit
-  Council Districts
-  Major Roads

 **DRAFT**
July 30, 2009 



City of Greensboro Community Indicators Program

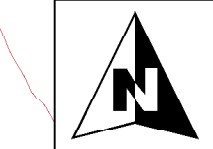
Levels of Community Stress



Conditions of Lower Stress  Conditions of Higher Stress 

Elements Displayed

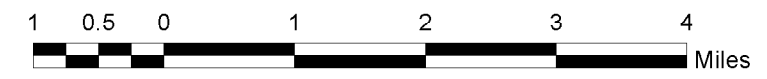
Safe Environment, as measured by 2003
Violent Crimes per Capita



Legend

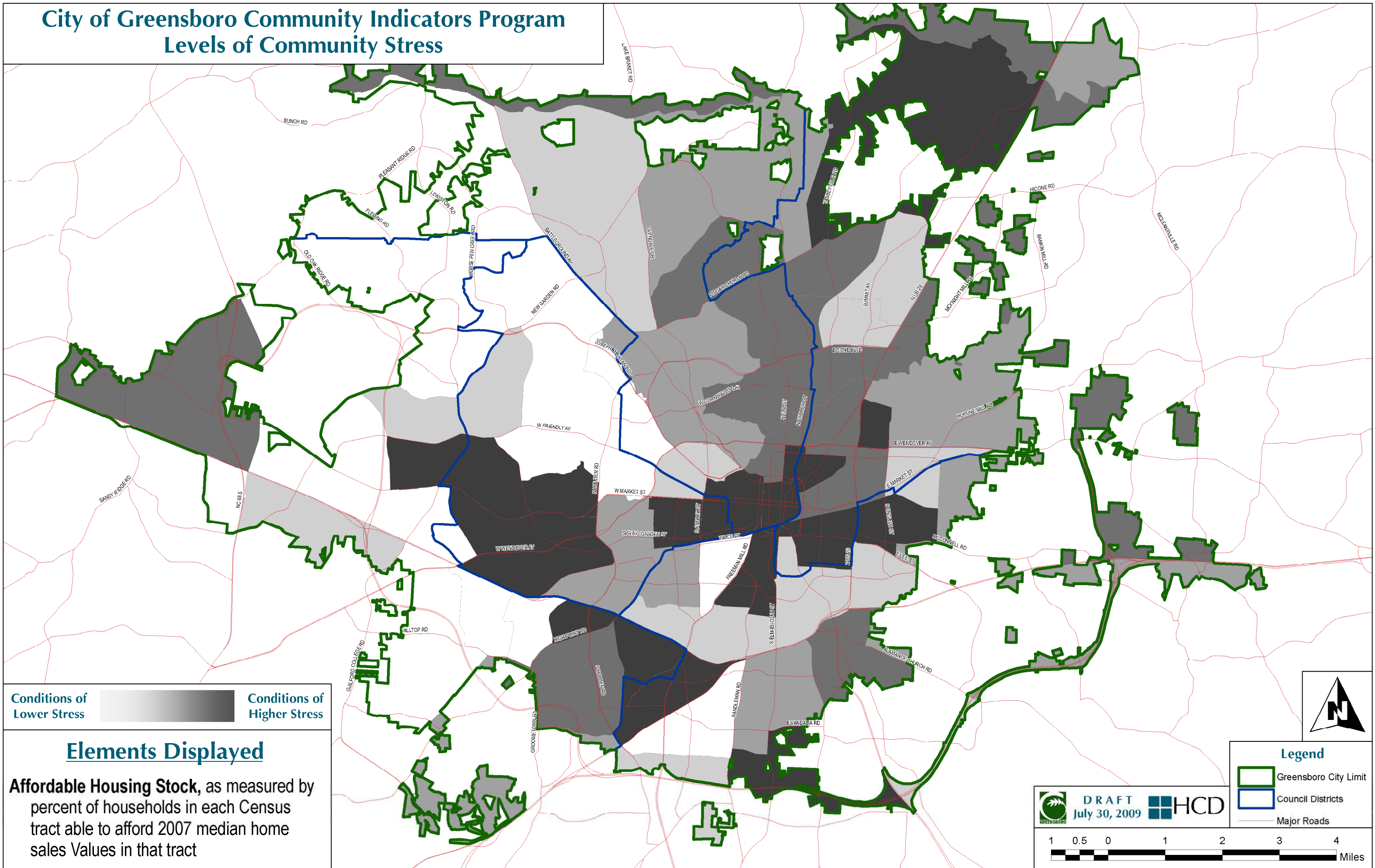
-  Greensboro City Limit
-  Council Districts
-  Major Roads

 **DRAFT**
July 30, 2009 



City of Greensboro Community Indicators Program



Levels of Community Stress






Conditions of Lower Stress  Conditions of Higher Stress 

Elements Displayed

Affordable Housing Stock, as measured by percent of households in each Census tract able to afford 2007 median home sales Values in that tract

 **DRAFT** July 30, 2009 

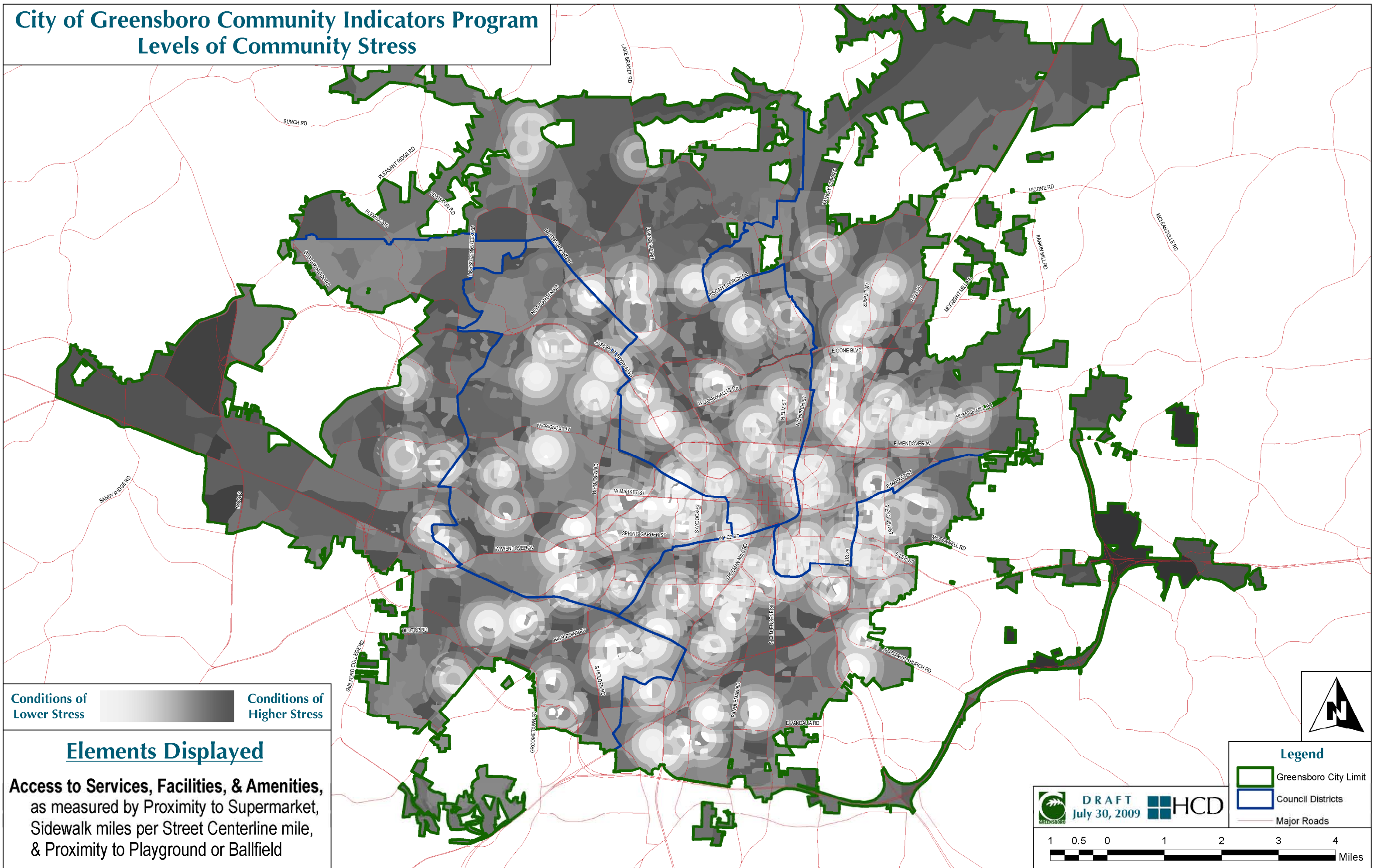
Legend

-  Greensboro City Limit
-  Council Districts
-  Major Roads

1 0.5 0 1 2 3 4 Miles

City of Greensboro Community Indicators Program

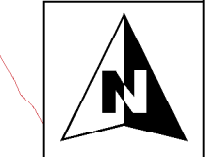
Levels of Community Stress






Conditions of Lower Stress  Conditions of Higher Stress 



Elements Displayed

Access to Services, Facilities, & Amenities,
as measured by Proximity to Supermarket,
Sidewalk miles per Street Centerline mile,
& Proximity to Playground or Ballfield



Legend

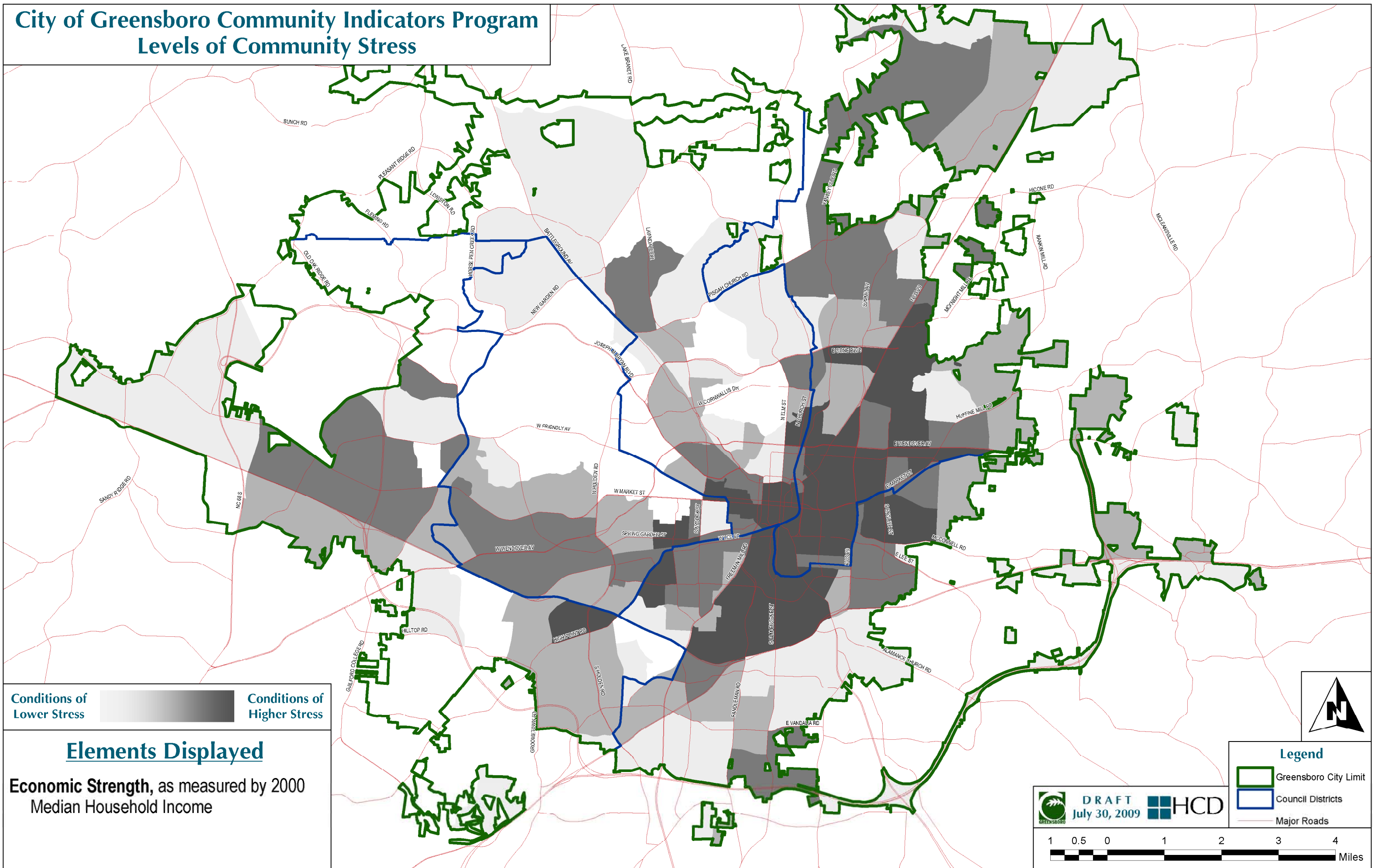
-  Greensboro City Limit
-  Council Districts
-  Major Roads

 **DRAFT**
July 30, 2009 

1 0.5 0 1 2 3 4 Miles

City of Greensboro Community Indicators Program

Levels of Community Stress






Conditions of Lower Stress  Conditions of Higher Stress

Elements Displayed

Economic Strength, as measured by 2000 Median Household Income



Legend

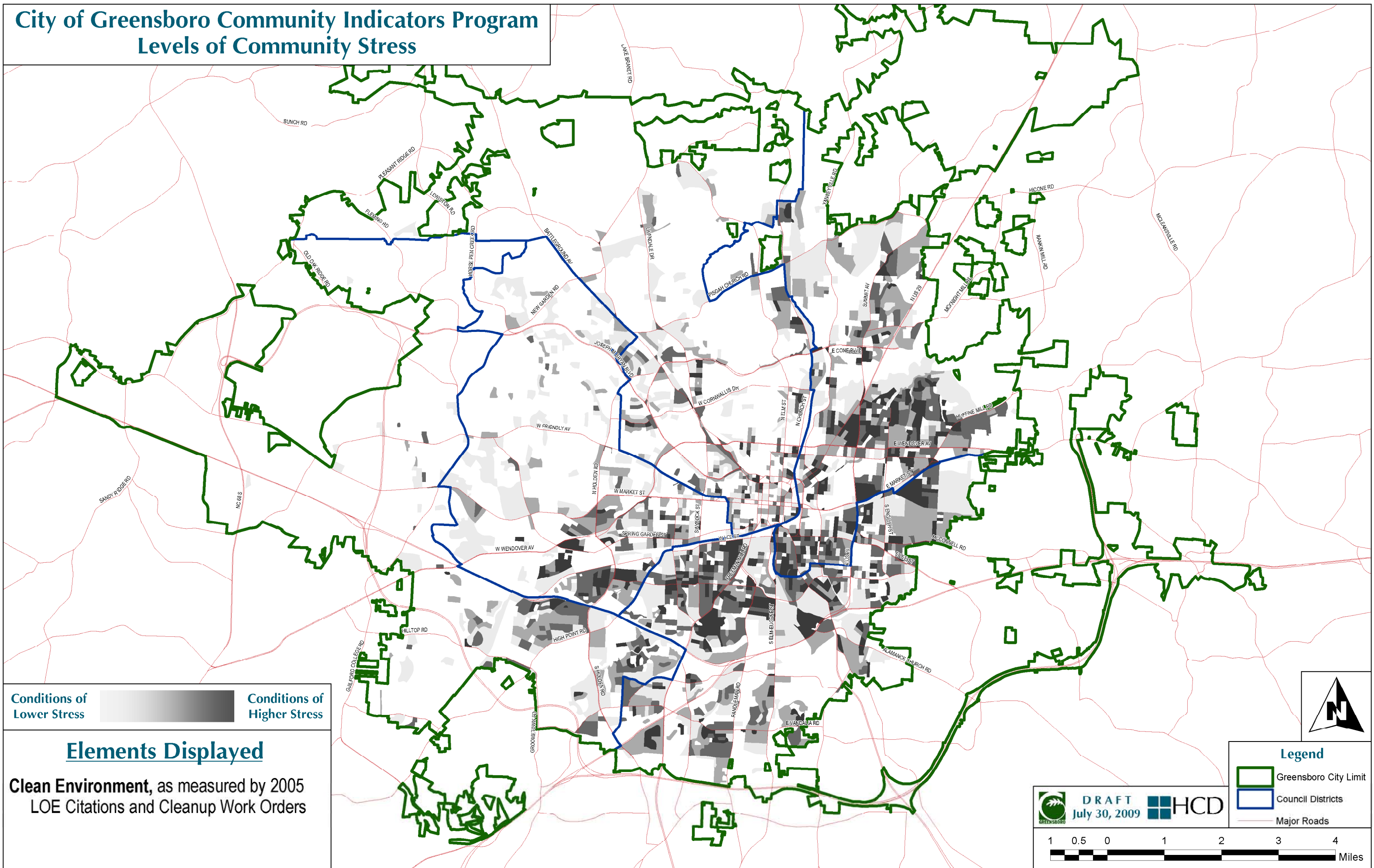
-  Greensboro City Limit
-  Council Districts
-  Major Roads

 **DRAFT**
July 30, 2009 



City of Greensboro Community Indicators Program

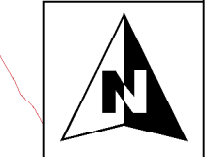
Levels of Community Stress






Conditions of Lower Stress  Conditions of Higher Stress 

Elements Displayed

Clean Environment, as measured by 2005 LOE Citations and Cleanup Work Orders



Legend

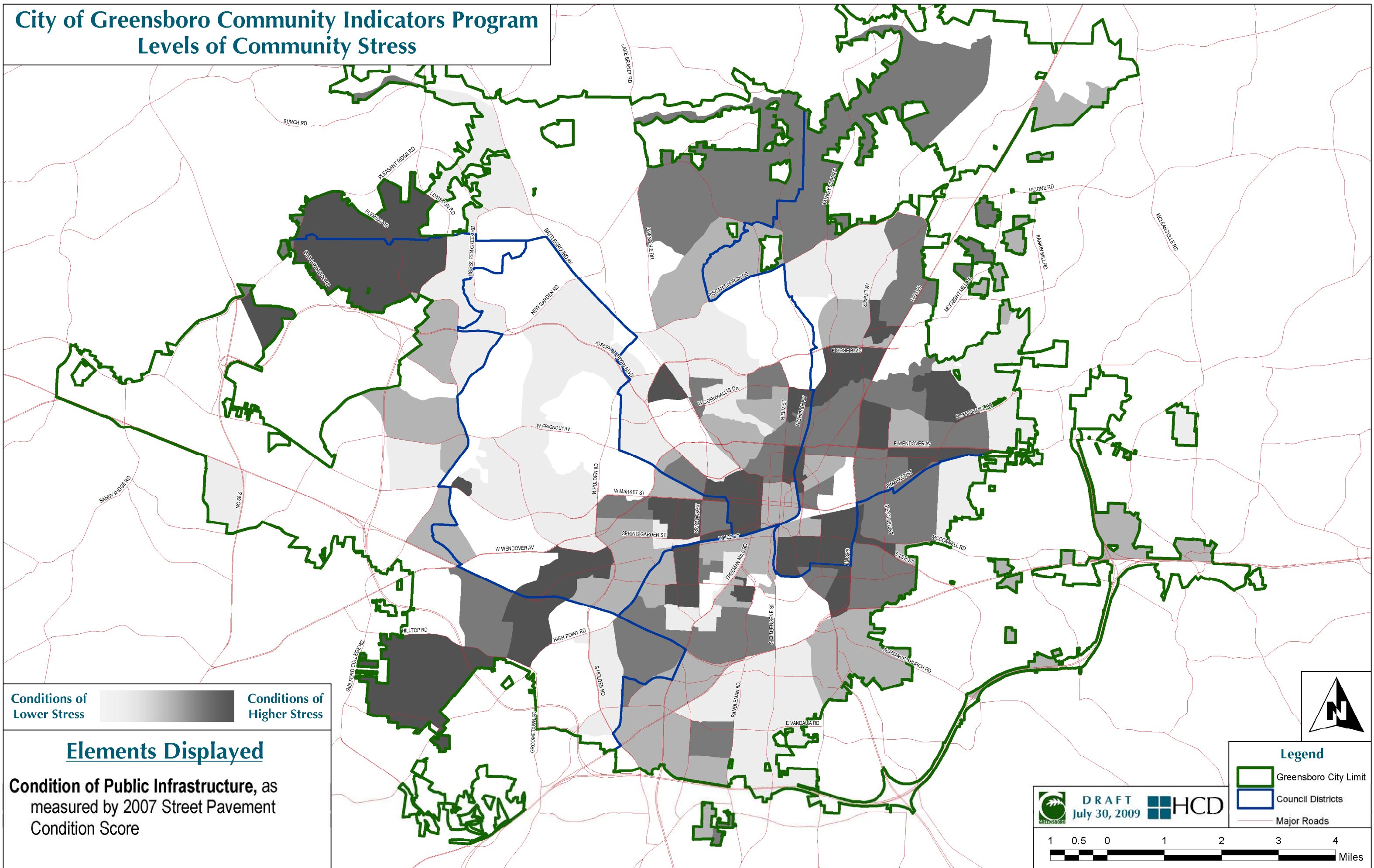
-  Greensboro City Limit
-  Council Districts
-  Major Roads

 **DRAFT**
July 30, 2009 



City of Greensboro Community Indicators Program

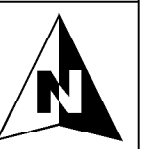
Levels of Community Stress




Conditions of Lower Stress  Conditions of Higher Stress 

Elements Displayed

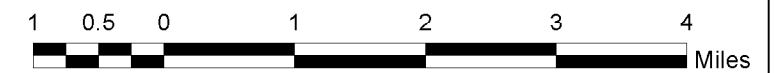
Condition of Public Infrastructure, as measured by 2007 Street Pavement Condition Score



Legend

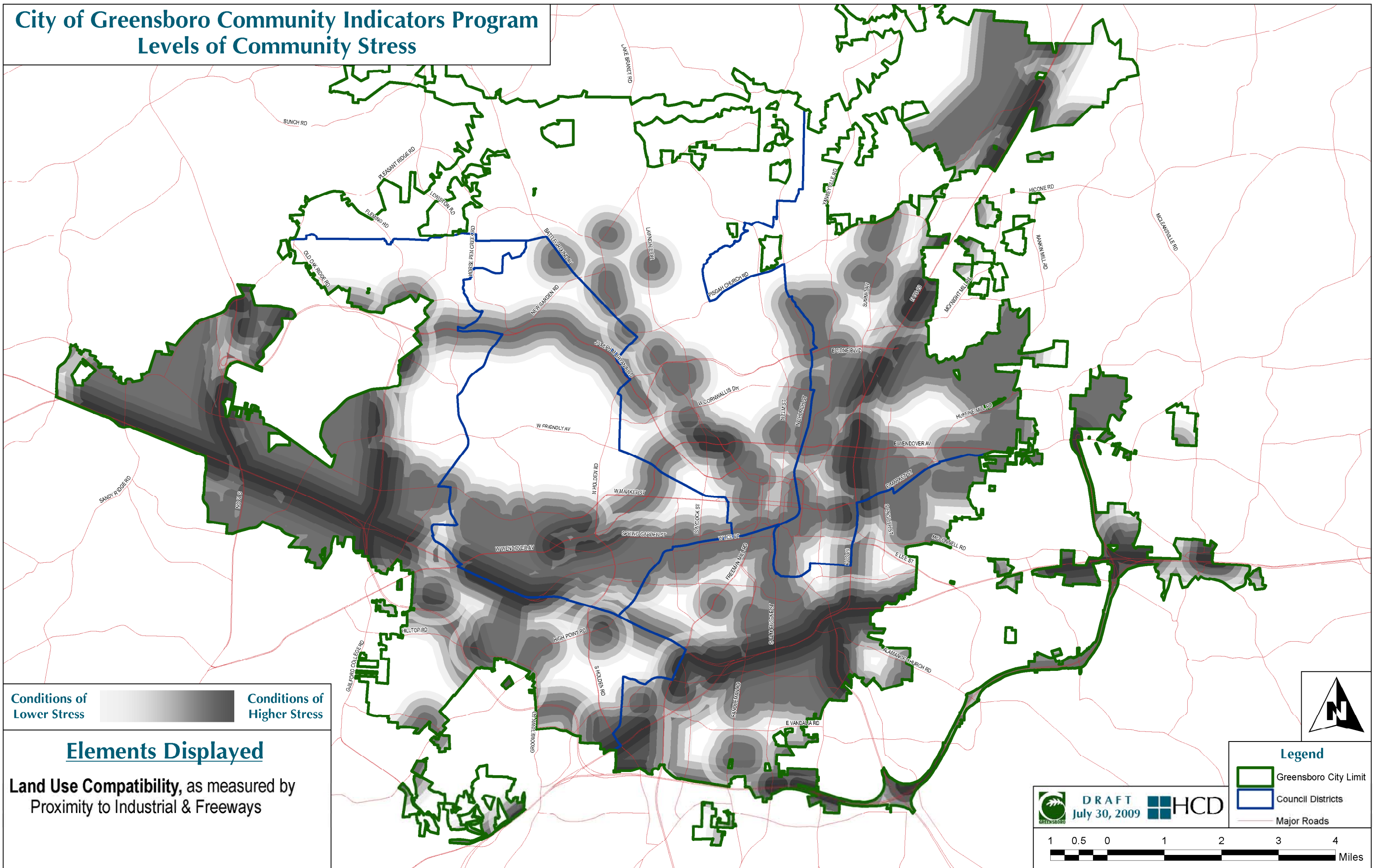
-  Greensboro City Limit
-  Council Districts
-  Major Roads

 **DRAFT**
July 30, 2009 



City of Greensboro Community Indicators Program

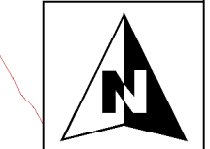
Levels of Community Stress






Conditions of Lower Stress  Conditions of Higher Stress

Elements Displayed

Land Use Compatibility, as measured by Proximity to Industrial & Freeways



Legend

-  Greensboro City Limit
-  Council Districts
-  Major Roads

 **DRAFT**
July 30, 2009 

