



August 2023

# YARD WASTE SERVICE ENHANCEMENT

Field Operations



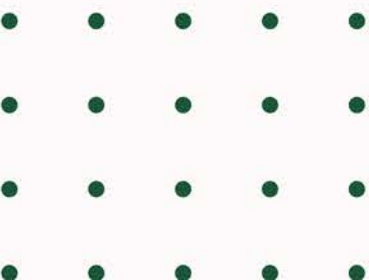


# Loose Leaf Program Now

- The current model is not "Green" or sustainable.
- It is difficult to attract and retain temporary workers.

# 40%

Only 40% of our residents currently use the Loose Leaf Program



# Future of Leaf Collection

01



Provide residents one 95-gallon yard waste bin. We'll also offer residents the option to purchase a second 95-gallon yard waste bin.

Use only biodegradable paper bags for **additional** yard waste. These will be available at any hardware store or big box store.



02

03



We will limit bags to 10 per week in addition to the cart. To help residents though, we'll propose a 15-bag limit during leaf season.



# Employee Safety

## 01

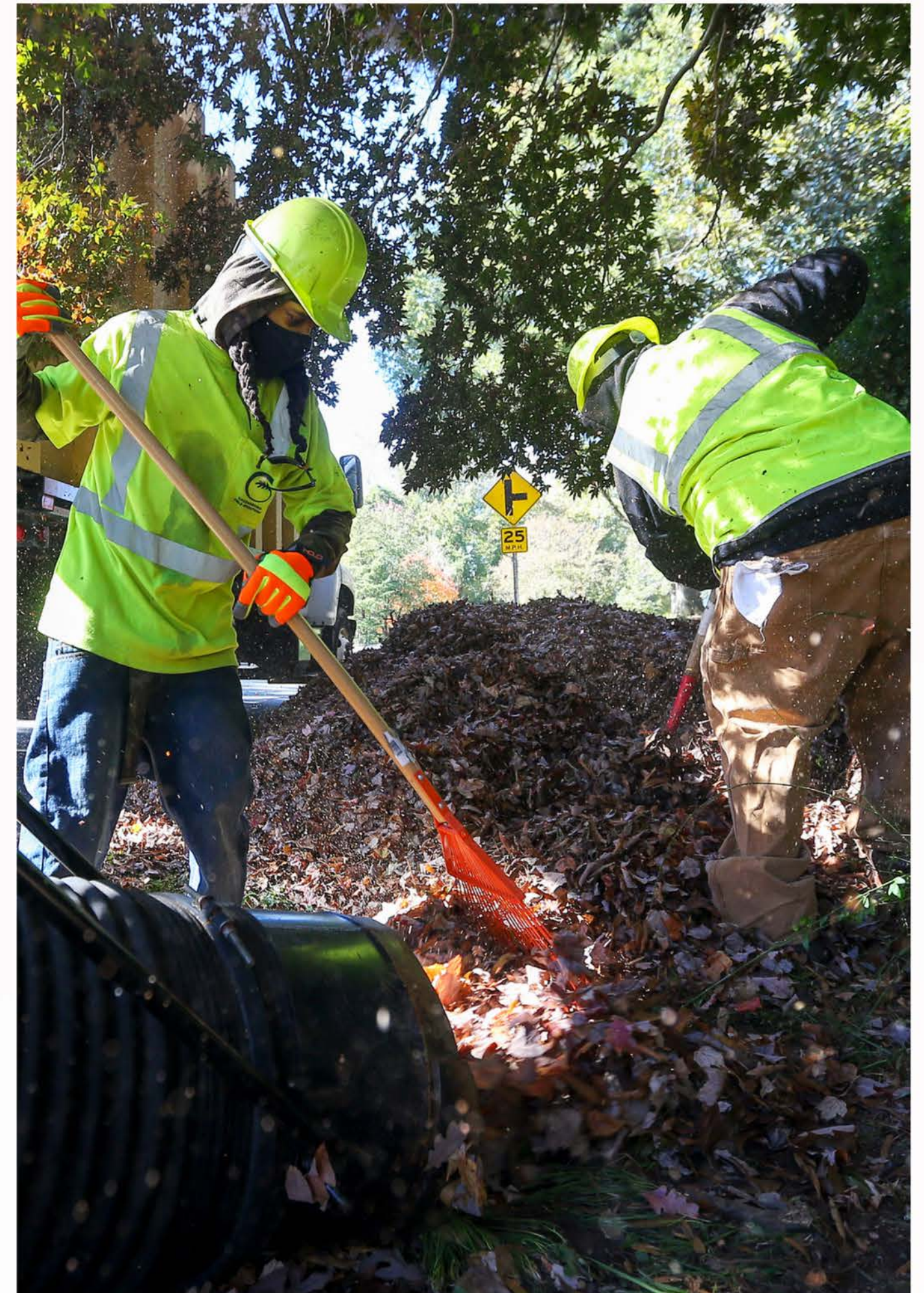
Sixty-eight (68) full-time employees have been affected with lost time injuries over the past five years. An unknown number of temp employees have also lost time due to injuries.

## 02

Temporary labor contract costs have increased, though the availability of workers has decreased.

## 03

The lack of available temp workers means a longer wait for residents to receive loose leaf services.



# Side Benefits

The City's Loose Leaf Collection Program keeps City employees from focusing on issues such as:



Potholes



Litter



Illegal Dumping

# WEATHER IMPACT

A long, cold and wet winter impacts the loose leaf collection by extending the program, leaving workers occupied, and many residents turn to bagging their own leaves at that point, making it even more difficult.



# PEER CITIES

What are the cities of Charlotte, Raleigh & Durham doing with their services.



- Charlotte does not offer a Loose Leaf Program
- Residents must use paper yard waste bags or reusable containers
- Charlotte has outlawed plastic bags for yard waste
- Takes residential carts



- Durham does not offer a Loose Leaf Program
- Durham offers a subscription based yard waste service
- Durham picks up leaves with residential carts
- Residents may use paper yard waste bags - limit 10 bags per collection



- Raleigh offers a Loose Leaf Program
- Residents may use a 95-gallon City-issued cart
- Residents may use paper yard waste bags - limit of 15 bags per collection
- Raleigh has outlawed plastic bags for yard waste