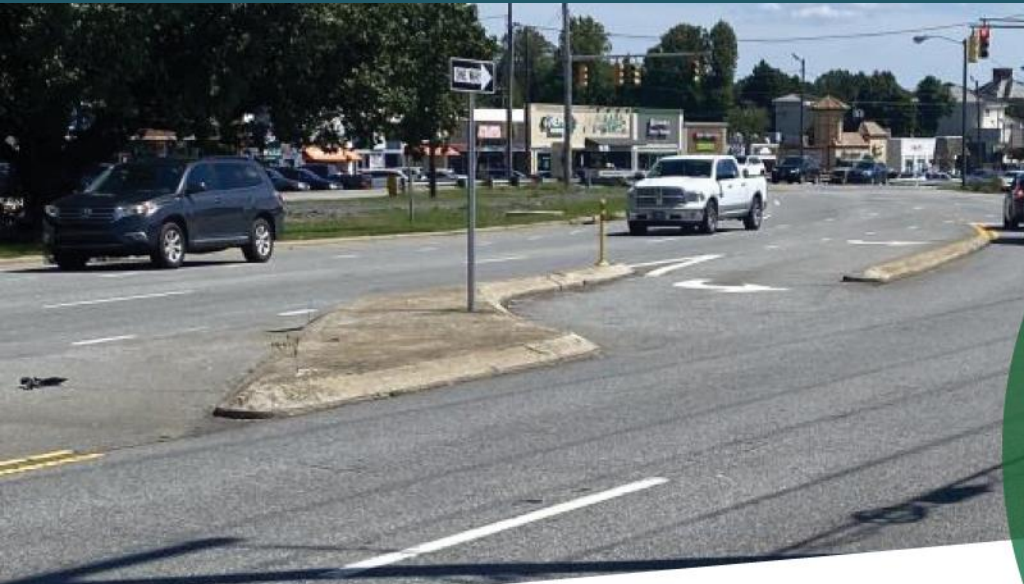


# Battleground/Lawndale/Westover Reconfiguration NCDOT Project U-6108



STATE OF NORTH CAROLINA  
DEPARTMENT OF TRANSPORTATION

GREENSBORO  
URBAN AREA  
**MPO**  
METROPOLITAN PLANNING ORGANIZATION



March 27, 2023

# AGENDA



# AGENDA

- ❖ Background and Overview
- ❖ Needs and Goals
- ❖ Known Issues
- ❖ Multi-Modal Considerations
- ❖ Next Steps/Project Timeline
- ❖ Breakout Stations
- ❖ Feedback(In-person or Online)

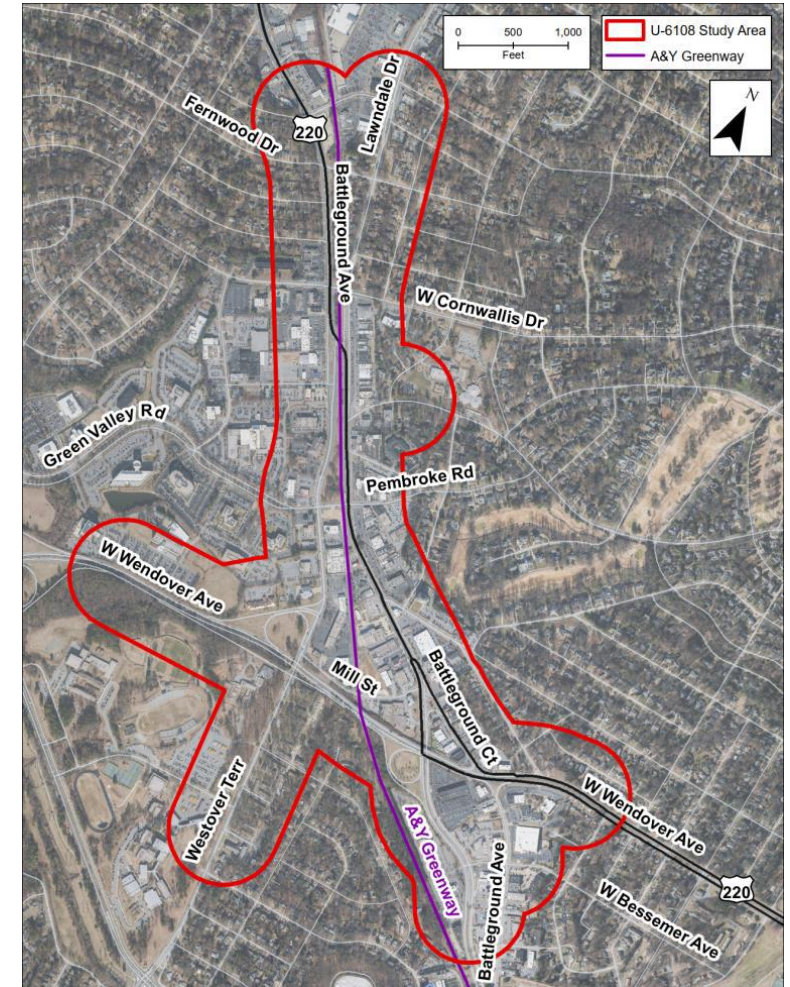


# BACKGROUND & OVERVIEW



# BACKGROUND & OVERVIEW

- NCDOT and the City are seeking early community input on important outcomes for Project U-6108.
- The project proposes to improve Battleground Avenue, Lawndale Drive, and Westover Terrace between Wendover Avenue and Fernwood Drive.
- Other future projects within the study area include A&Y Greenway, Wendover Avenue bridges, and sidewalks along Green Valley Road and Wendover Avenue.



## BACKGROUND & OVERVIEW

- In 2006, the City conducted a planning study in the corridor.
- In 2018, Project U-6108 was added to the State Transportation Improvement Program (STIP).
- Project funding will be reviewed during NCDOT's Prioritization process. A project schedule has not been determined.



# NEEDS & GOALS



# NEEDS & GOALS

- Provide a less confusing roadway network
- Improve safety for all roadway users
- Preserve/enhance bus stop access
- Accommodate future A&Y Greenway, bicyclists, and pedestrians





## NEEDS & GOALS

- Maintain as much existing access to needed destinations as possible
- Manage traffic flow and congestion
- Insufficient space for turning vehicles.
- Approaches have increased time travel delays.



# KNOWN ISSUES



## KNOWN ISSUES

Transportation conditions along the project corridor are color-coded green, yellow, and red to indicate the severity of known issues.


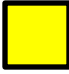

- **Green** locations have the least issues.
- **Yellow** locations have moderate number of issues
- **Red** locations have the most issues.

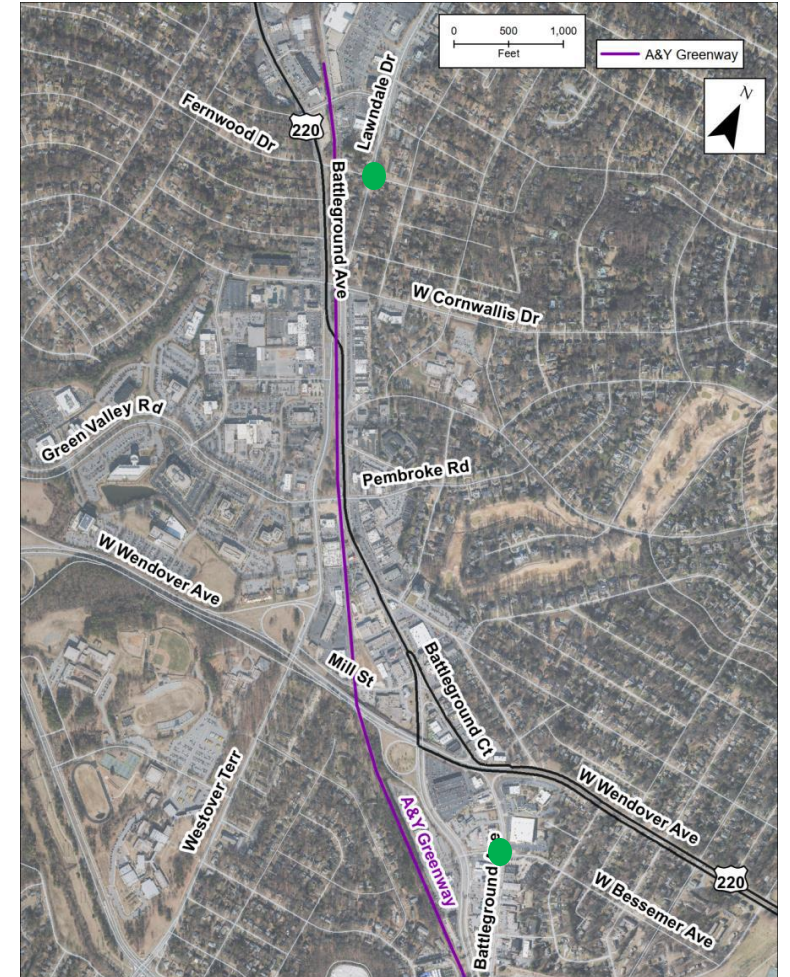
These locations and respective designations are shown on the next slides.

# KNOWN ISSUES

- Insufficient space for turning vehicles.
- Approaches have increased time travel delays.

## LEGEND


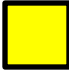

-  Locations that have the least number issues.
-  Locations that have moderate number of issues.
-  Locations that have highest number of issues.

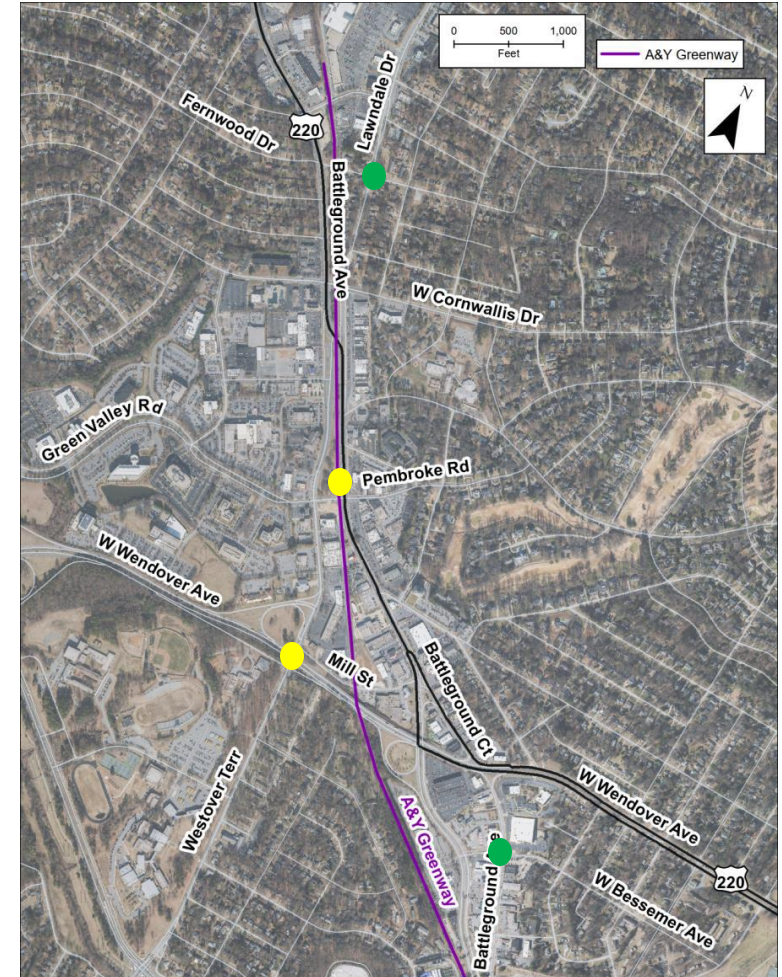


# KNOWN ISSUES

- Insufficient space for turning vehicles.
- Approaches have increased time travel delays.
- High crash frequency.

## LEGEND


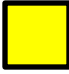

-  Locations that have the least number issues.
-  Locations that have moderate number of issues.
-  Locations that have highest number of issues.

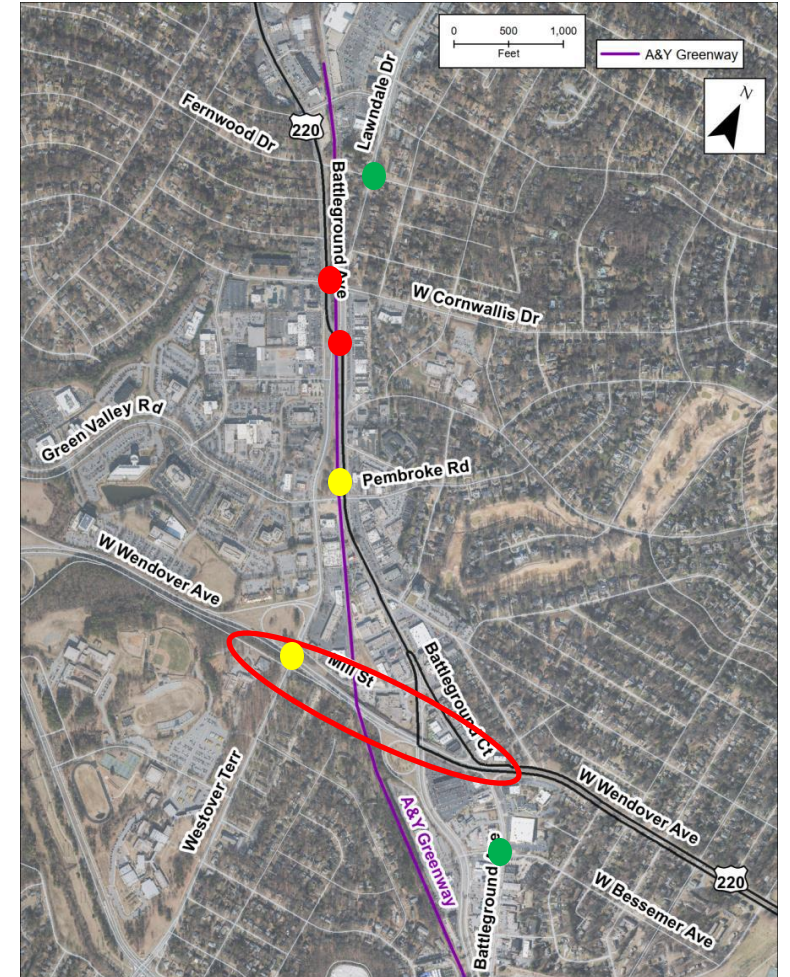


# KNOWN ISSUES

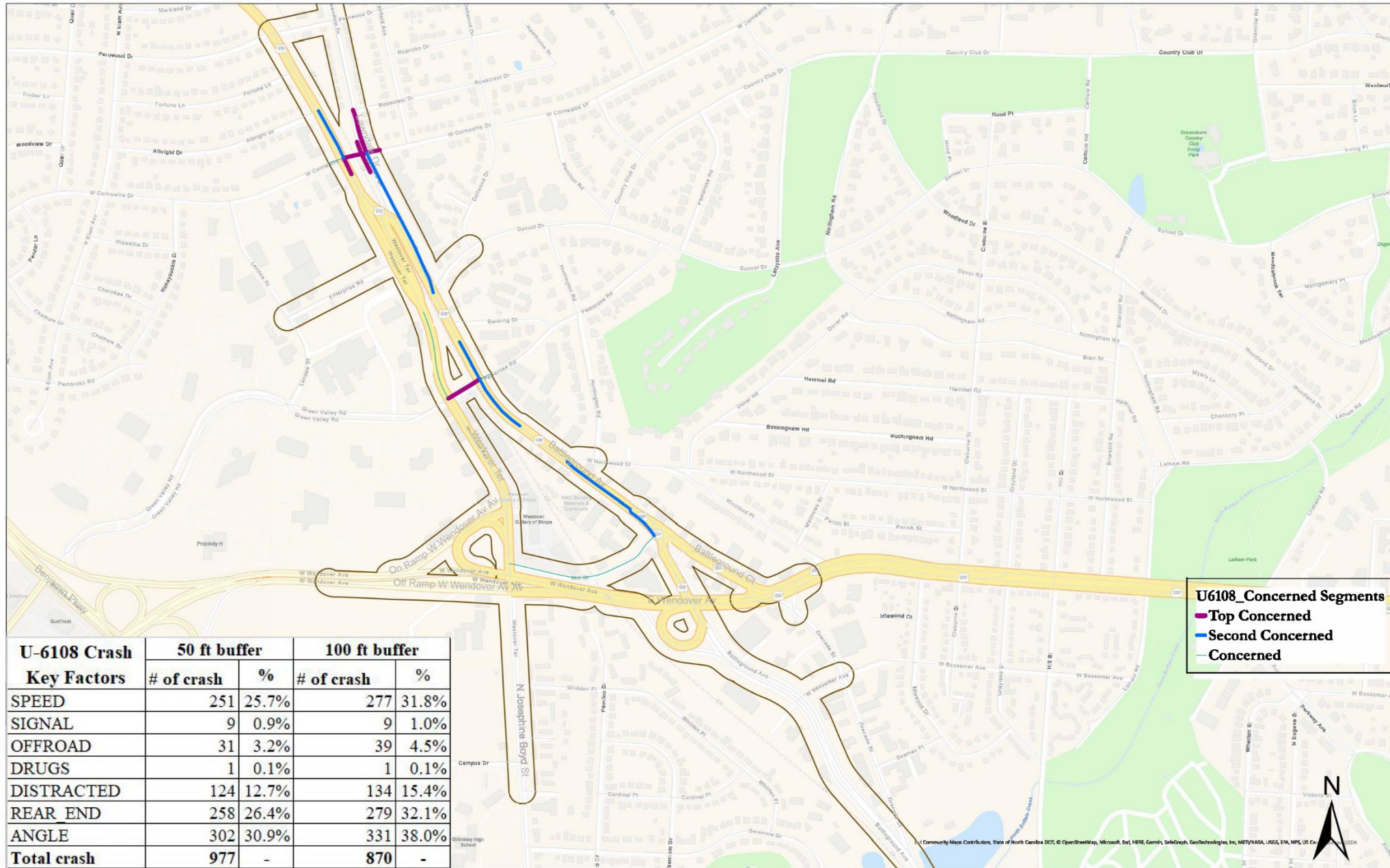
- Insufficient space for turning vehicles.
- Approaches have increased time travel delays.
- High crash frequency.
- Multiple Complex traffic movements
- Transition in control of access
- Short weaving distances to for traffic to maneuver between entrances and exits.

## LEGEND

-  Locations that have the least number issues.
-  Locations that have moderate number of issues.
-  Locations that have highest number of issues.



# U-6108 Area Crashes (2016 –2020)



# MULTI-MODAL CONSIDERATIONS





# MULTI-MODAL CONSIDERATIONS

Multi-modal considerations along the project corridor include, but are not limited to:

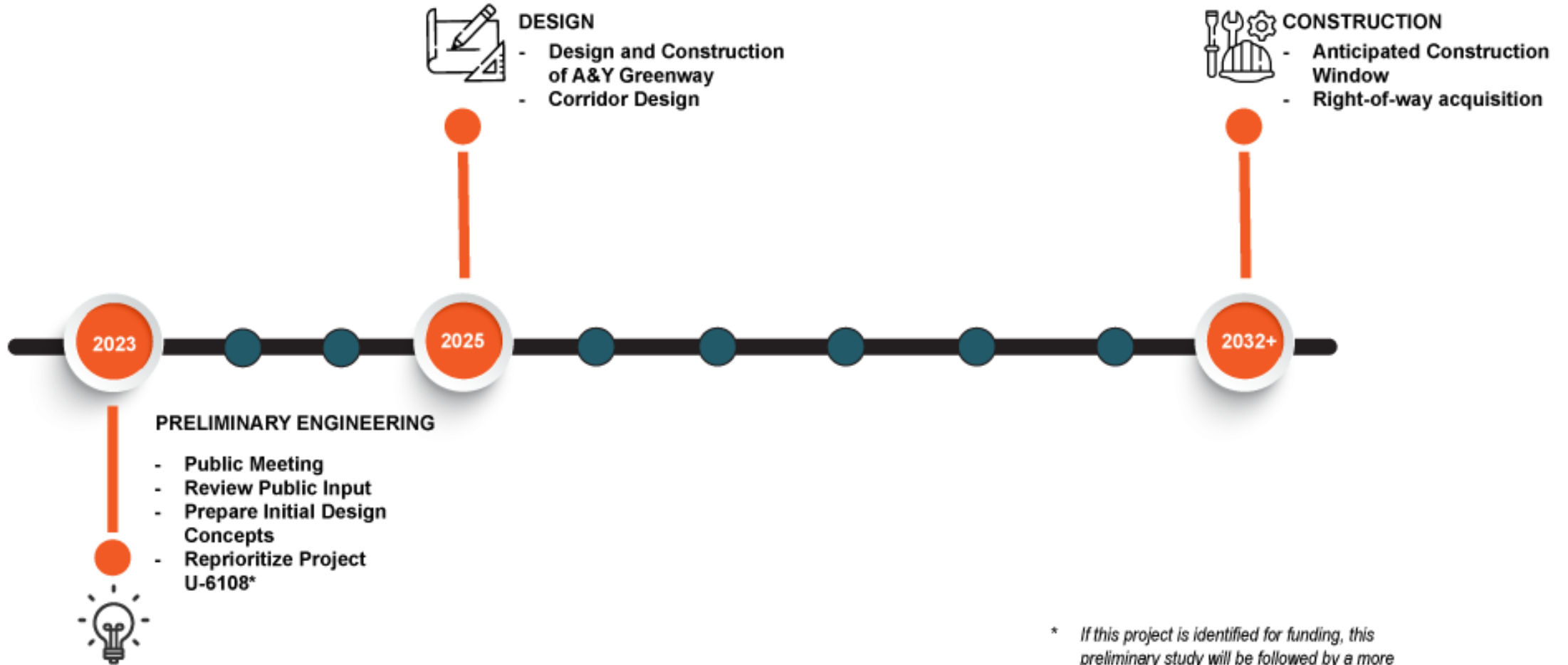
- Bicycle friendly roadways
- Pedestrian crossings and connectivity
- Bus stops infrastructure and access
- Future A&Y Greenway crossings of major intersections



# PROJECT TIMELINE



# PROJECT TIMELINE



\* If this project is identified for funding, this preliminary study will be followed by a more detail planning and design process.

**FEEDBACK**



# FEEDBACK

**Please take the opportunity to visit each Breakout Station to learn more about the project and to provide feedback.**

