

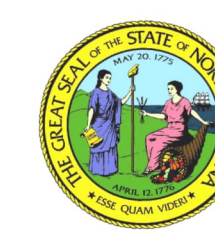


Whitman, Reardon & Associates, LLP
 1201 Edwards Mill Road, Suite 320, Raleigh, North Carolina 27606

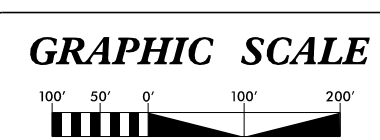
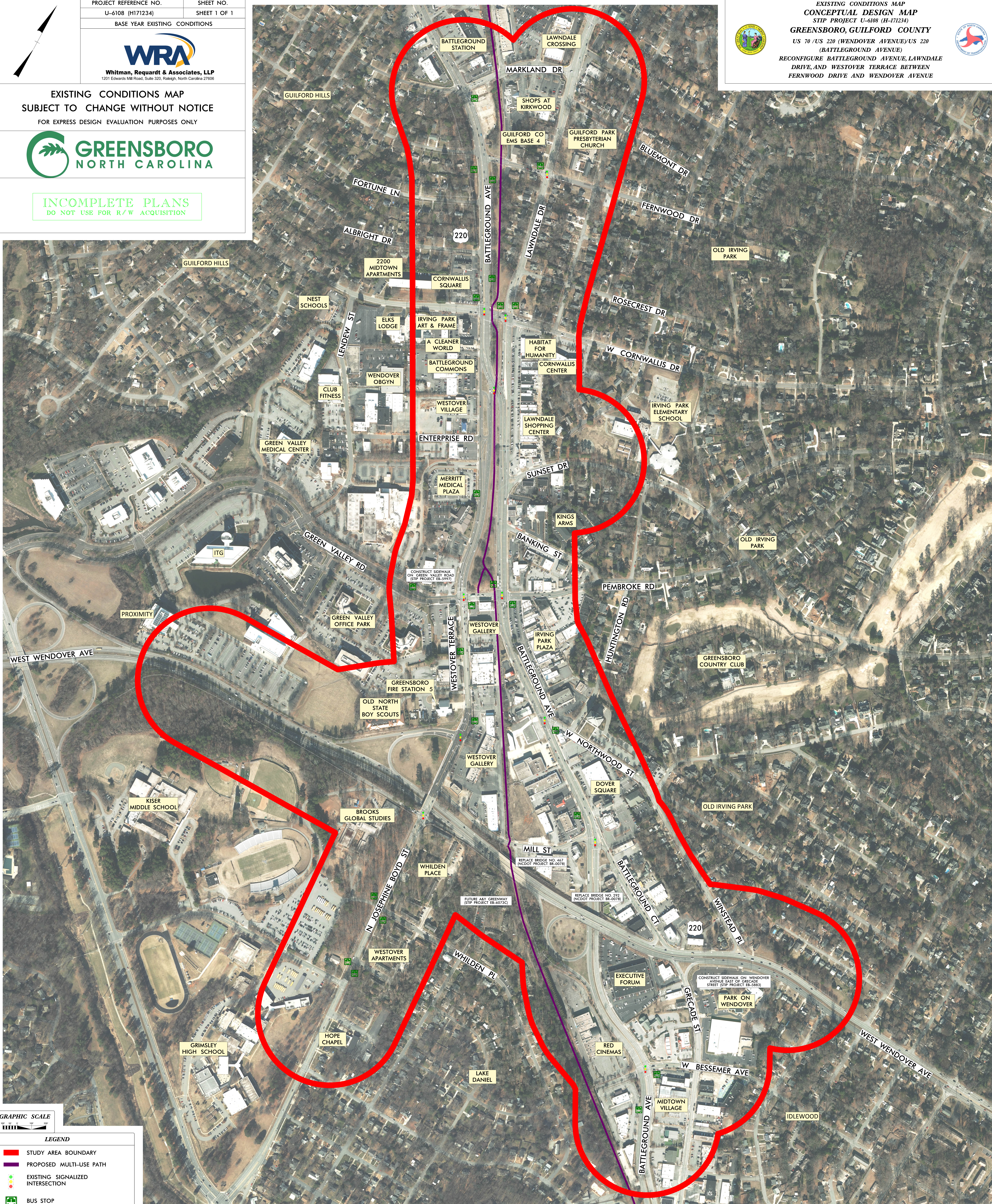
EXISTING CONDITIONS MAP
 SUBJECT TO CHANGE WITHOUT NOTICE
 FOR EXPRESS DESIGN EVALUATION PURPOSES ONLY



INCOMPLETE PLANS
 DO NOT USE FOR R/W ACQUISITION



EXISTING CONDITIONS MAP
 CONCEPTUAL DESIGN MAP
 STIP PROJECT U-6108 (H-171234)
GREENSBORO, GUILFORD COUNTY
 US 70 / US 220 (WENDOVER AVENUE/US 220
 (BATTEGROUND AVENUE)
 RECONFIGURE BATTEGROUND AVENUE, LAWDALE
 DRIVE, AND WESTOVER TERRACE BETWEEN
 FERNWOOD DRIVE AND WENDOVER AVENUE



LEGEND

	STUDY AREA BOUNDARY
	PROPOSED MULTI-USE PATH
	EXISTING SIGNALIZED INTERSECTION
	BUS STOP