



December 16, 2021

Carriage Woods
The Orchard
Neighborhood Meeting



Greensboro Department of Transportation (GDOT)


- Chris R. Spencer, PE – Transportation Engineering Manager
- Deniece Conway, PE – Engineering Supervisor
- David Ortega – Senior Engineer
- Scott Marion – Senior Engineer

North Carolina Department of Transportation (NCDOT)

- Wright R. Archer, III, PE – Division Engineer
- Patty Eason, PE – Division Construction Engineer
- Jason Julian – Resident Engineer



Goals for Tonight's Meeting

- Briefly discuss neighborhood concerns expressed to GDOT historically
 - Briefly discuss NCDOT urban loop project timeline and what impacts it may have in both communities
 - Briefly discuss traffic calming methodology and what it may look like on Peach Orchard Drive
 - Next Steps
 - Questions/Comments
- 

Existing Conditions

- Peach Orchard Drive is a classified collector street, posted 25MPH and has a curb to curb width between 32' and 36'
- Proposed for resurfacing in Summer 2022 (exact timing TBD)



Past Concerns

- Additional STOP control along Peach Orchard Drive
- Speeding along Peach Orchard Drive



ALL-WAY STOP controls

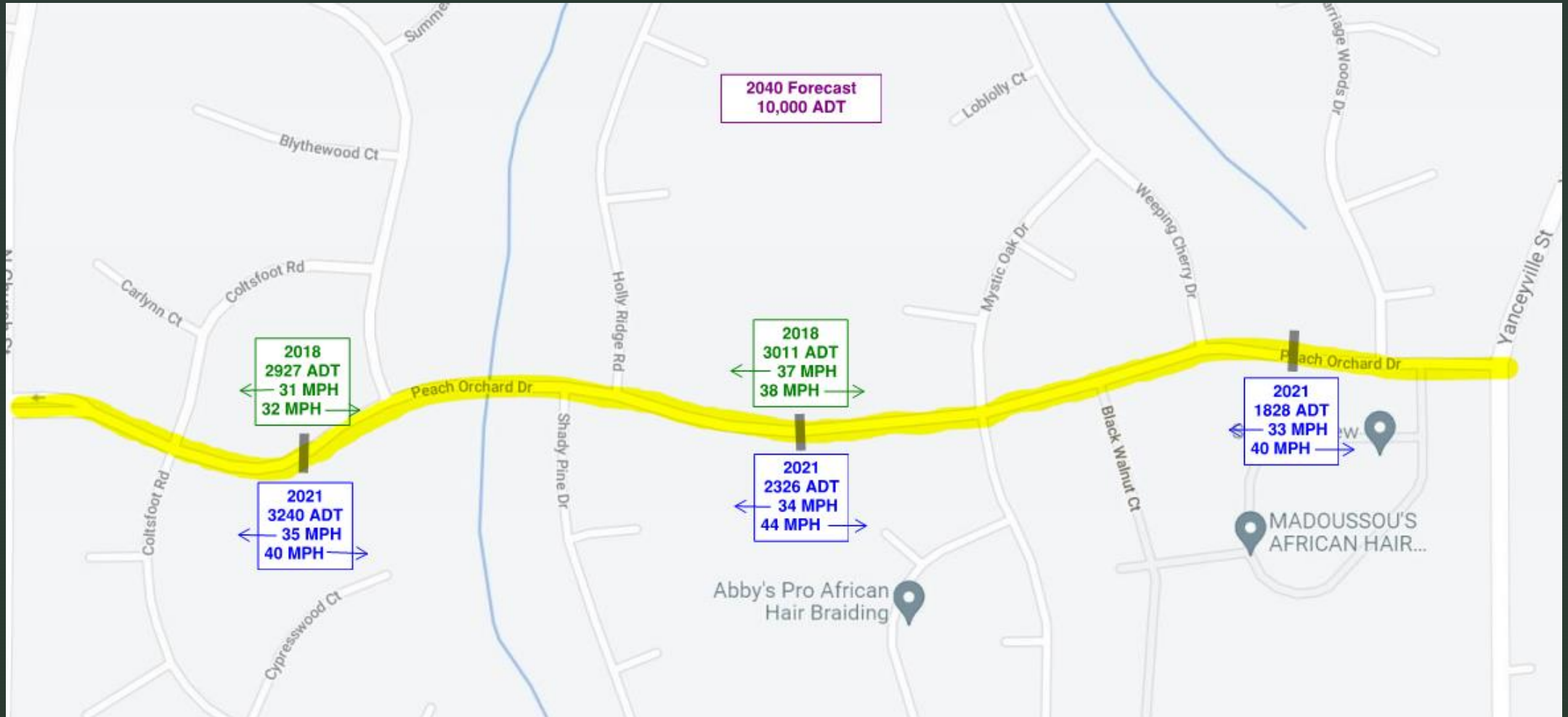
- Request for ALL-WAY STOP controls at Carriage Woods Drive, Weeping Cherry Drive and Mystic Drive to address speeding concerns on Peach Orchard Drive
- Manual on Uniform Traffic Control Devices (MUTCD) states that STOP signs should not be used for speed control but rather to determine right-of-way
- The above mentioned intersections have not meet minimum requirements for the installation of ALL-WAY STOP signs

Speeding on Peach Orchard

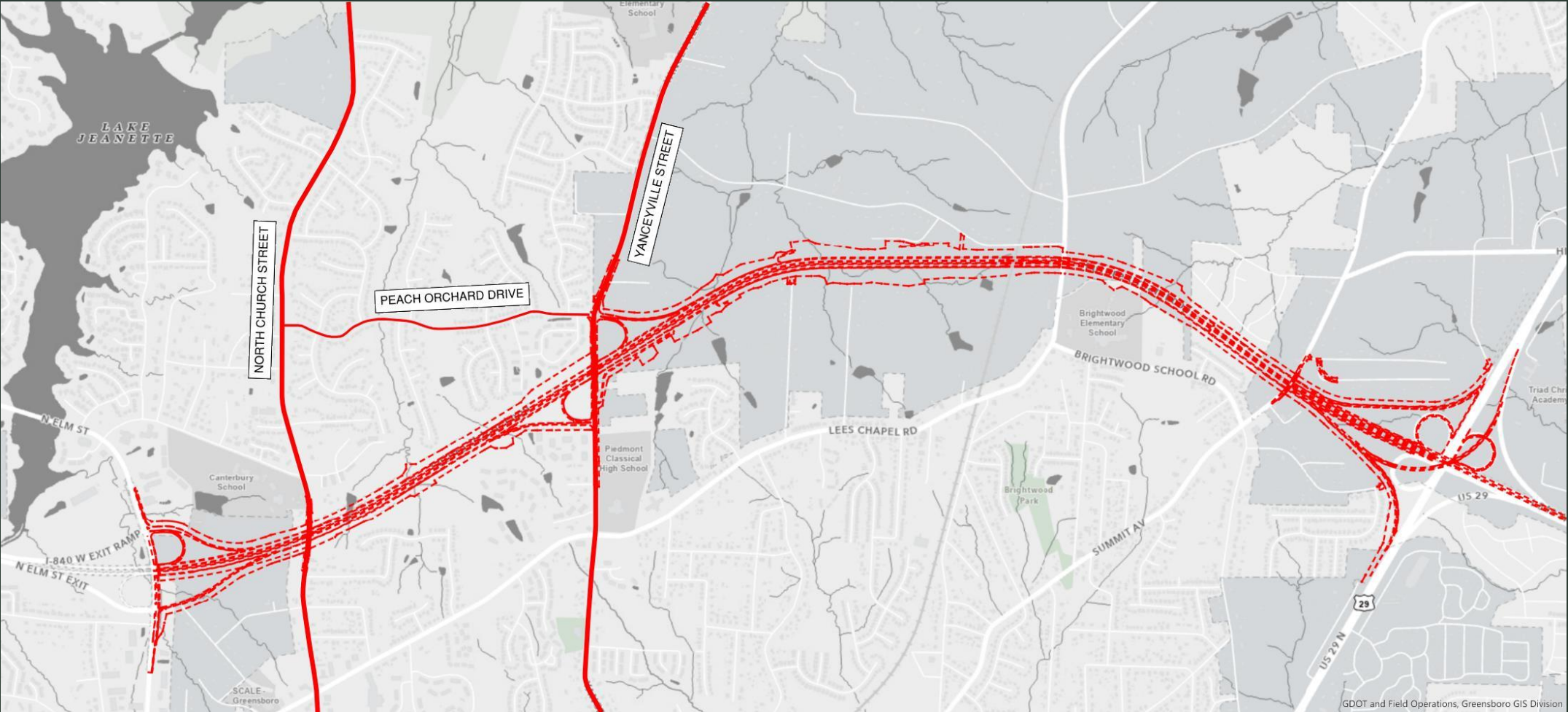
- The Orchard participated in the Neighborhood Speed Watch Program
- Speed studies were conducted in both communities in 2018 and 2021
- Digital speed boards were installed for two weeks in both communities



Speed Study Results

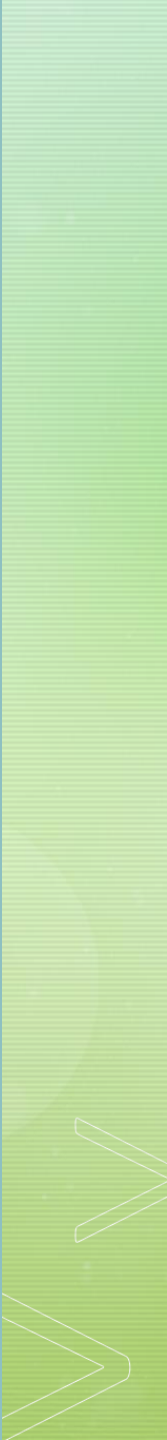


Future Urban Loop Proximity Map





Neighborhood Traffic Management

- Horizontal, vertical, lane narrowing, roadside and other features that use self-enforcing means to produce desired effects either on a single street or street network
 - Different types of improvements to address specific concerns
- 



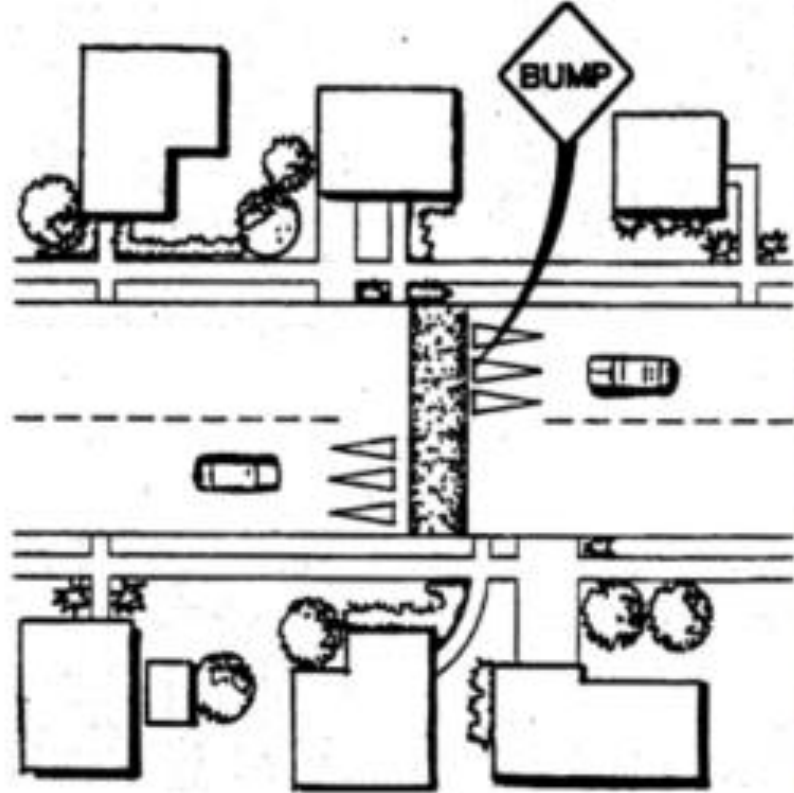
Vertical Deflection



Vertical Deflection



Speed Humps



Speed Hump in Durham, NC

Vertical Deflection

Speed Cushions





Street Width Reductions



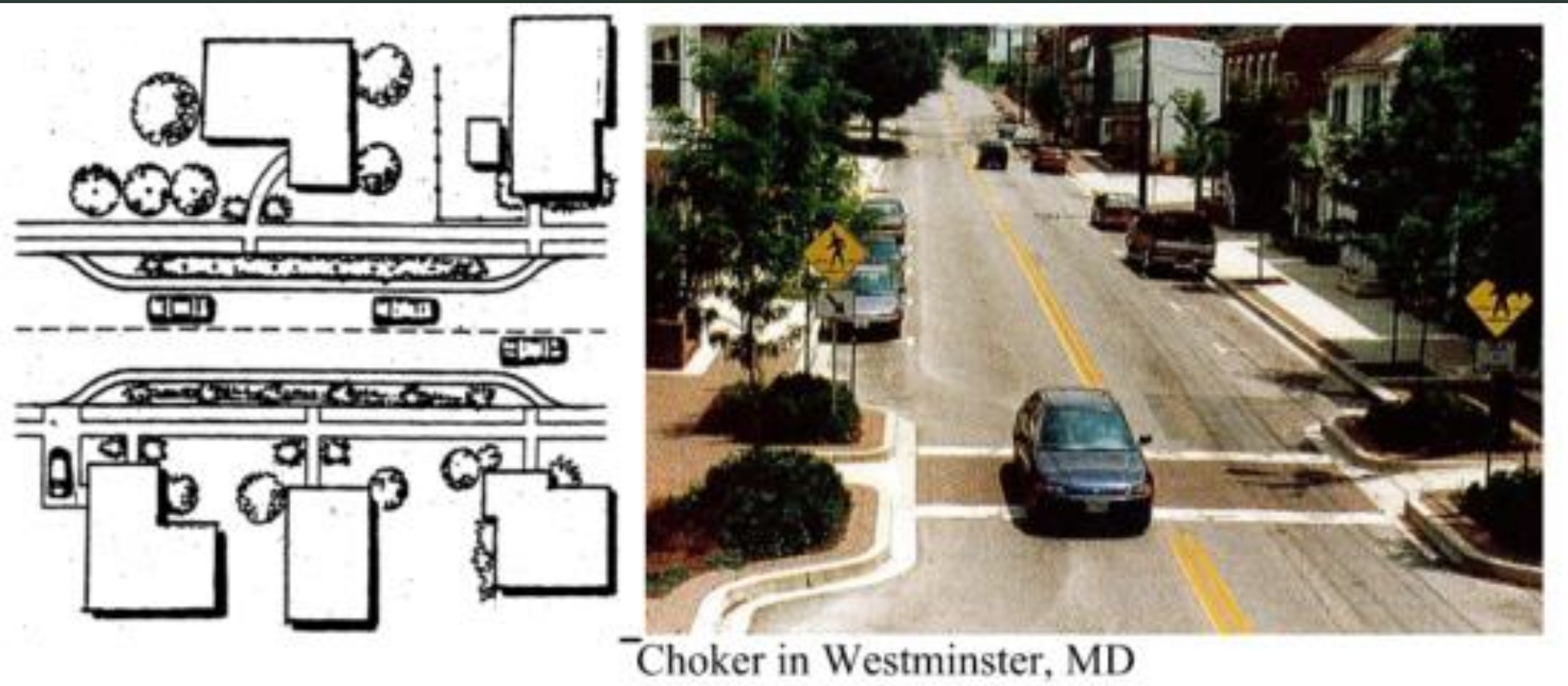
Street Width Reduction

On-street parking



Street Width Reductions

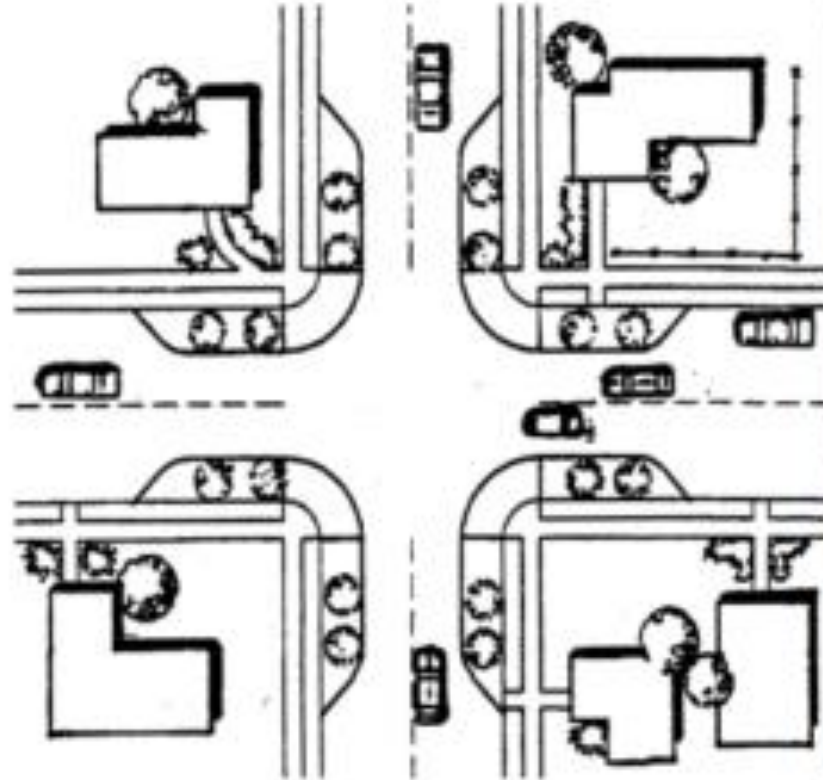
Chokers



Choker in Westminster, MD

Street Width Reductions

Bulb-outs (Corner Extensions)



Pedestrian Bulb-outs in Greensboro, NC

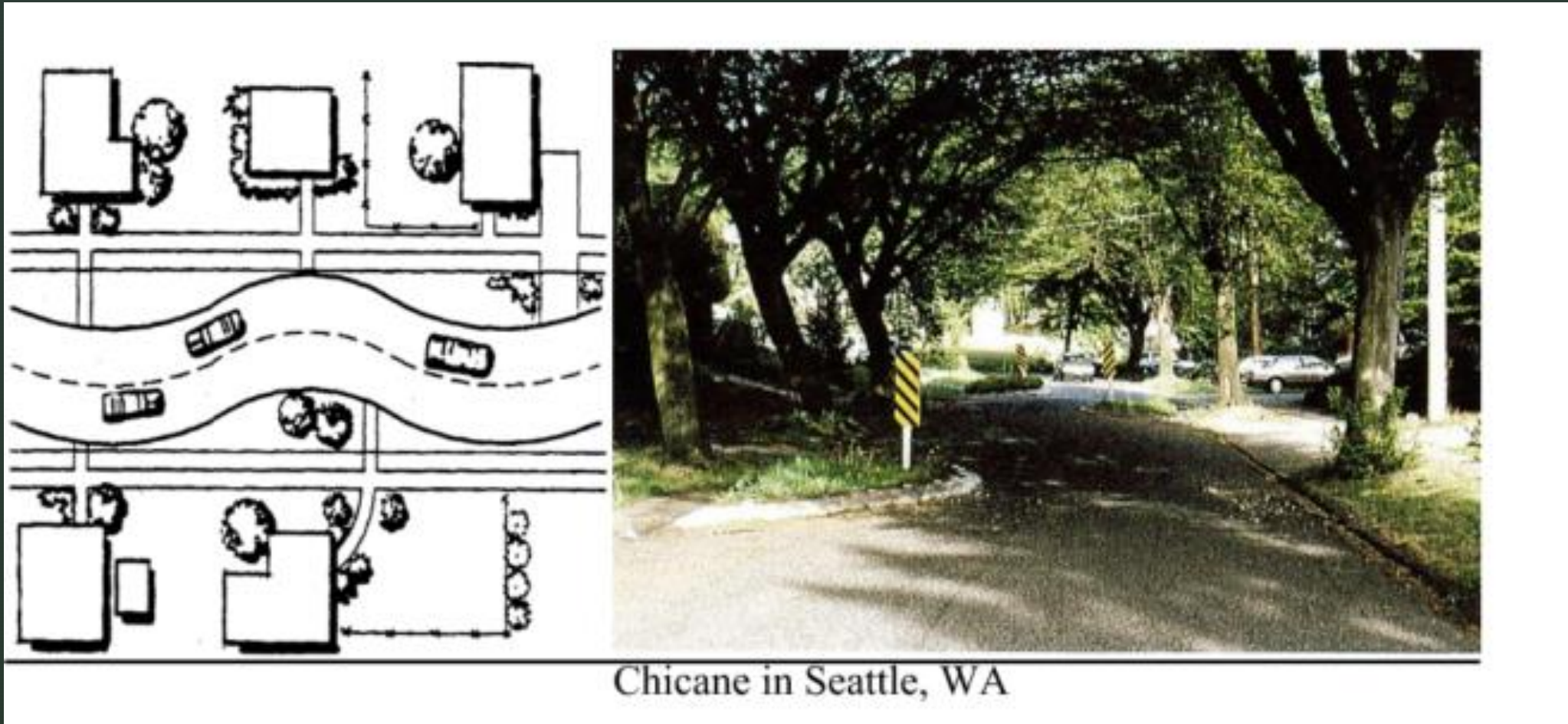


Horizontal Deflections



Horizontal Deflection

Chicane



Horizontal Deflection

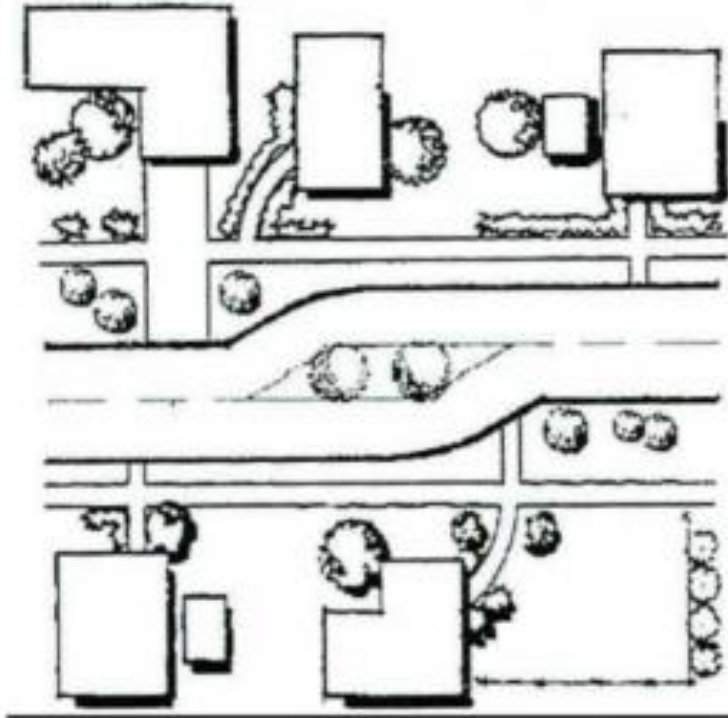
Traffic Circle/Mini Roundabout



Traffic Circle in Durham, NC

Horizontal Deflection

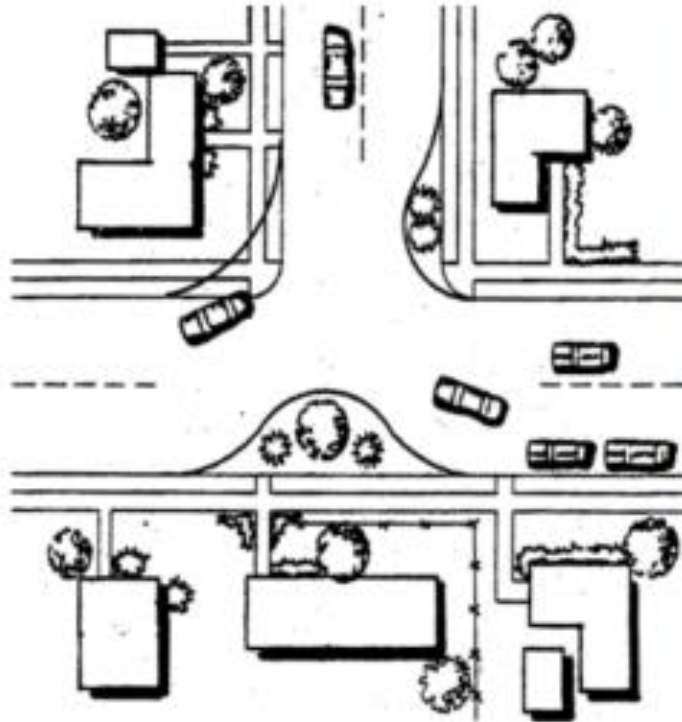
Lateral Shift



Lateral Shift in Raleigh, NC

Horizontal Deflection

Realigned Intersection



Realigned Intersection in Raleigh, NC



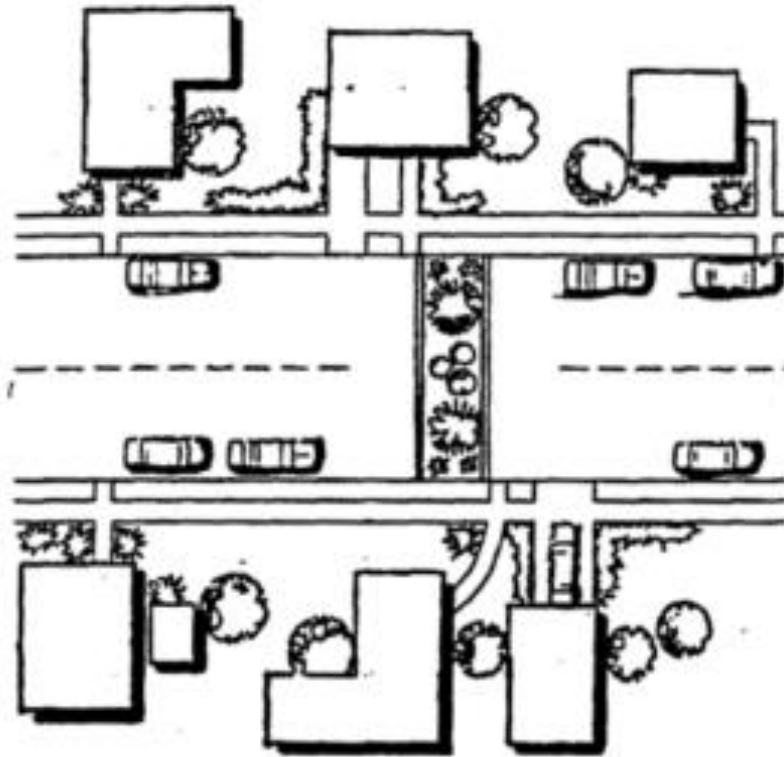
Routing Restrictions



Routing Restrictions

Full Closures

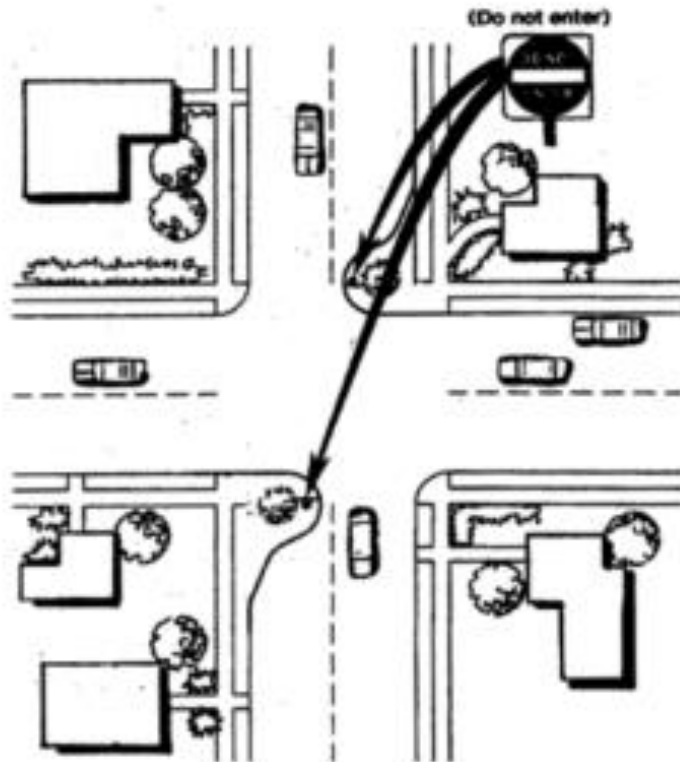
FULL STREET CLOSURES



Full Street Closure in Berkeley, CA

Routing Restrictions

Partial Closures



Partial Street Closure

▶ Peach Orchard Drive Options Church Street to near Shady Pine Drive

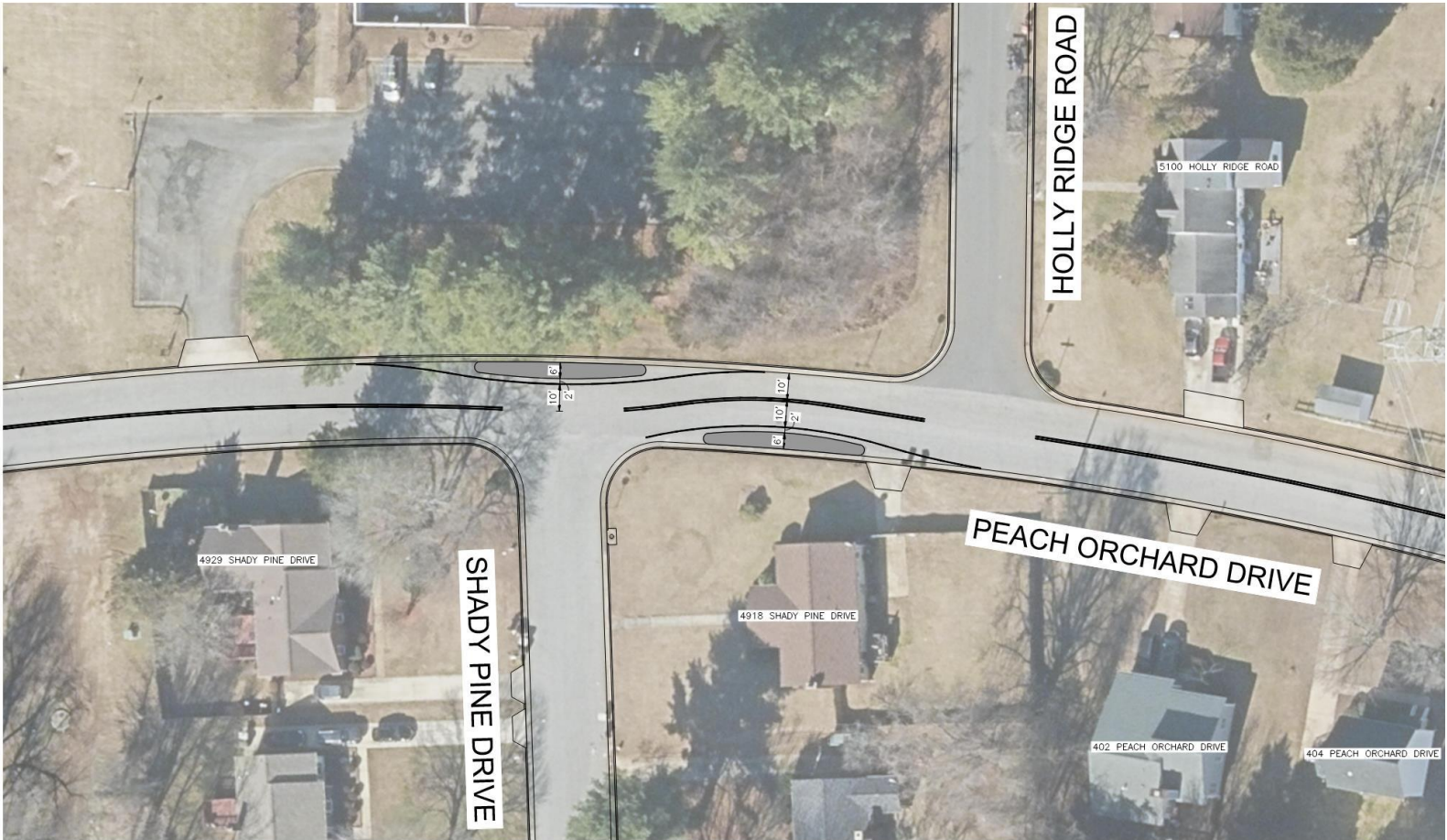


REVISIONS		CITY OF GREENSBORO	
DATE	BY	DEPARTMENT OF TRANSPORTATION	
		CHANNELIZATION	
		PEACH ORCHARD DRIVE NORTH CHURCH STREET TO YANCEVILLE STREET	
SCALE: 1"=40'		DATE: 11/12/21	REV.
DRAWN BY: S. MARION		FILE	
SHEET 1 OF 4		NO.	

Near Shady Pine Drive / Holly Ridge Road



Chicane Option at Shady Pine



Chicane Option
between Holly Ridge Road and Mystic Oak Drive

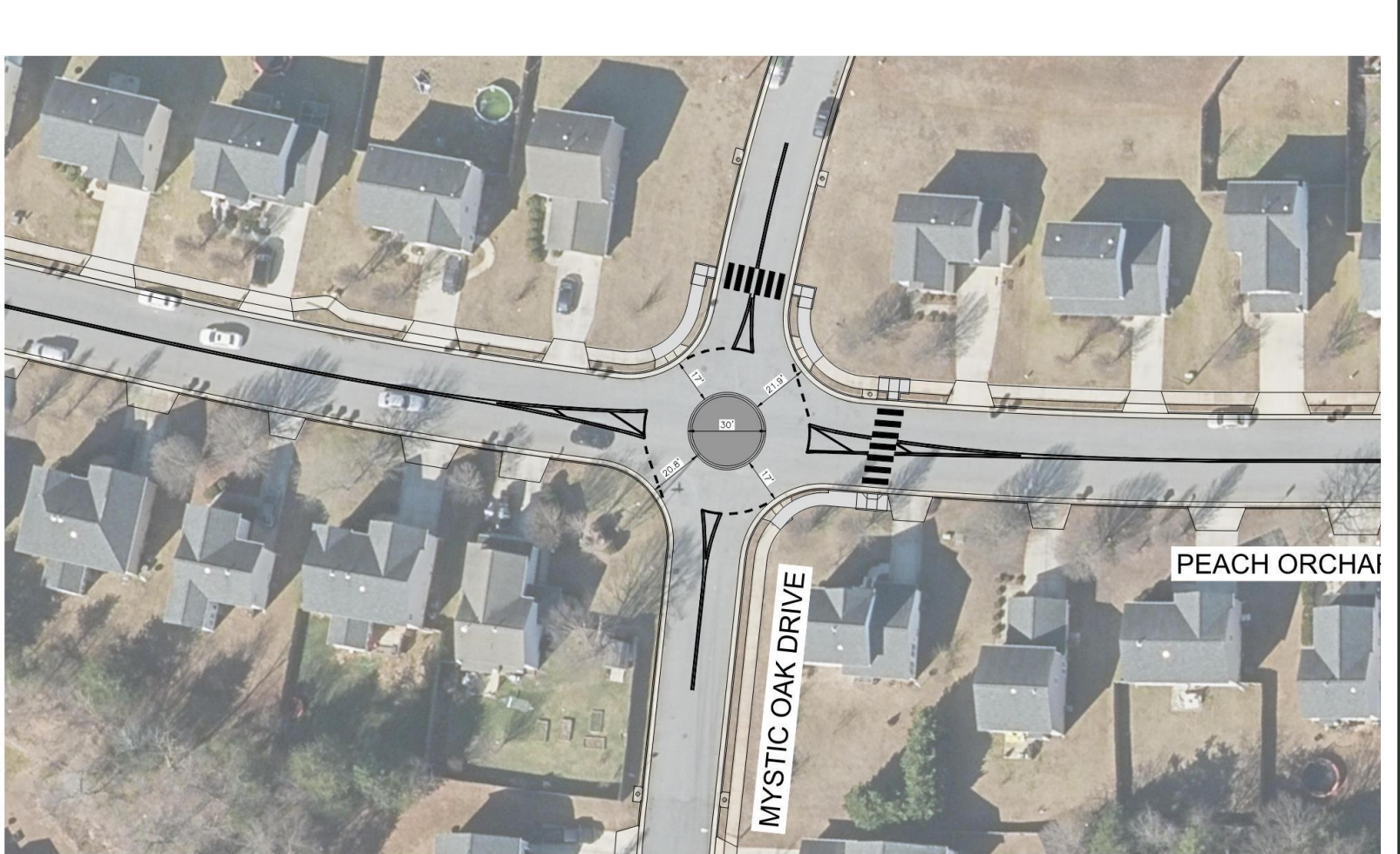


At Mystic Oak Drive

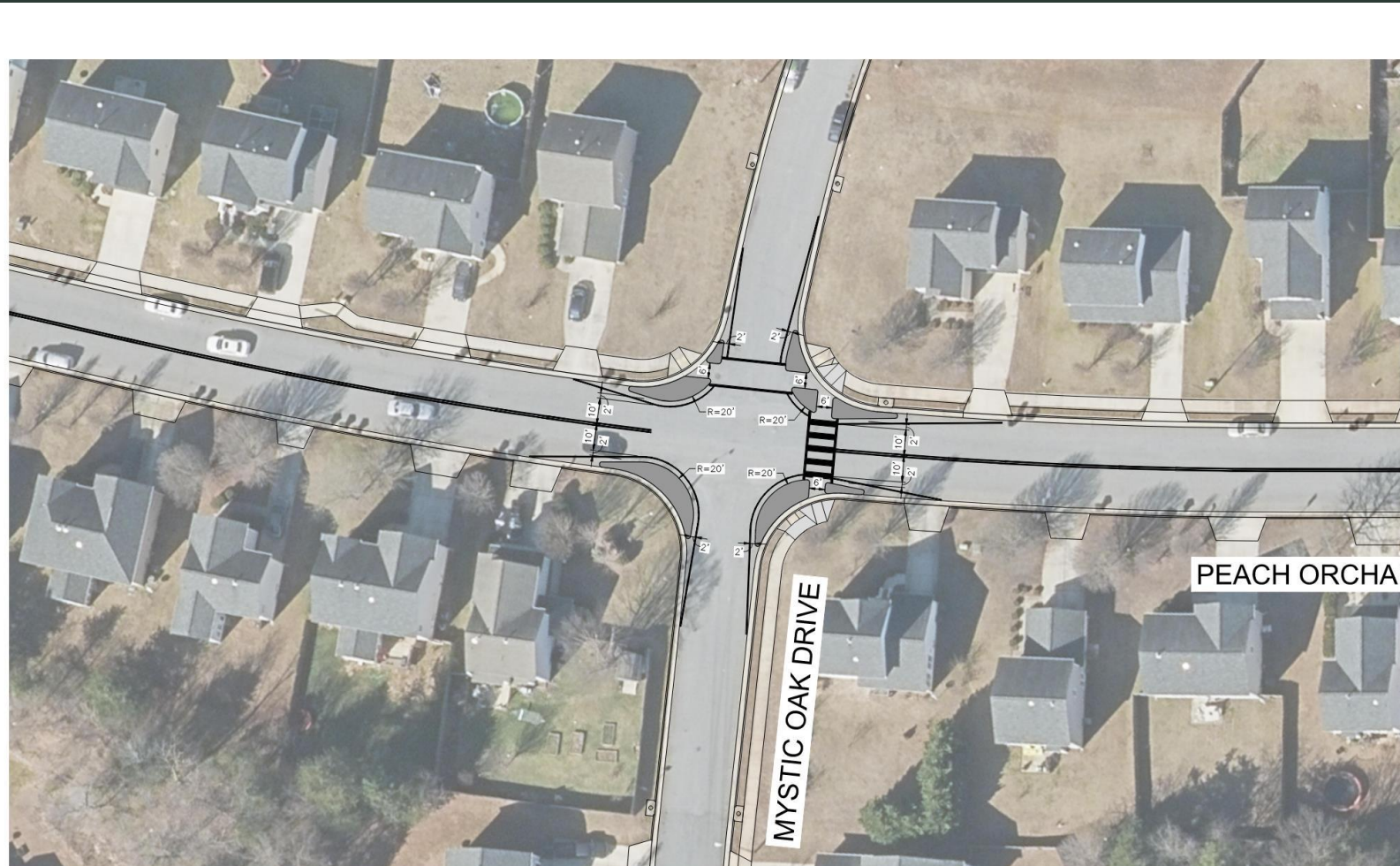


REVISIONS		CITY OF GREENSBORO	
DATE	BY	DEPARTMENT OF TRANSPORTATION	
		CONCEPTUAL DESIGN 2	
		PEACH ORCHARD DRIVE NORTH CHURCH STREET TO YANCEYVILLE STREET	
SCALE: 1"=40'		DATE: 11/12/21	REV.
DRAWN BY: S. MARION		FILE	
SHEET 3	OF 4	NO.	

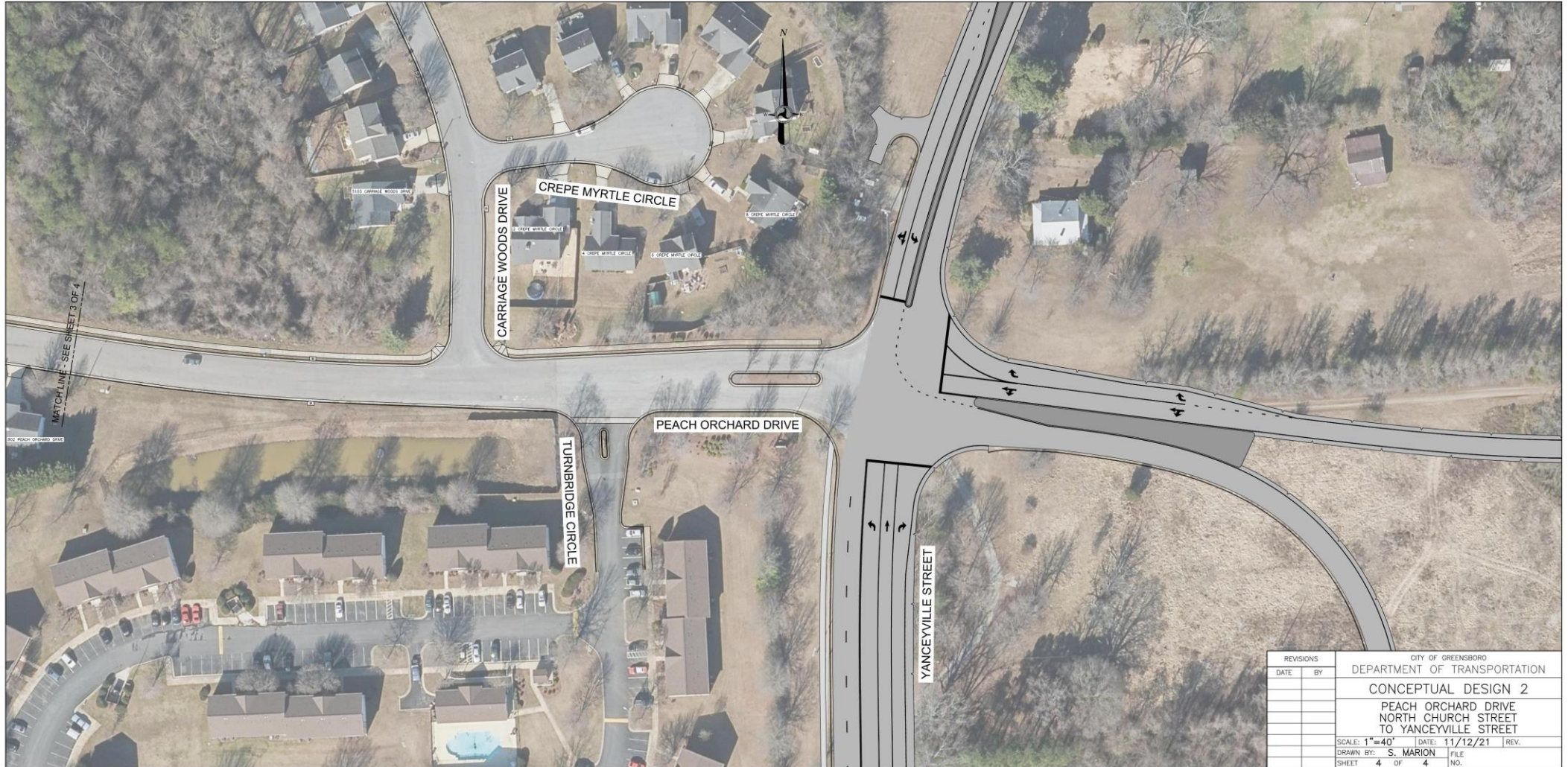
Mini-Roundabout Option at Mystic Oak Drive



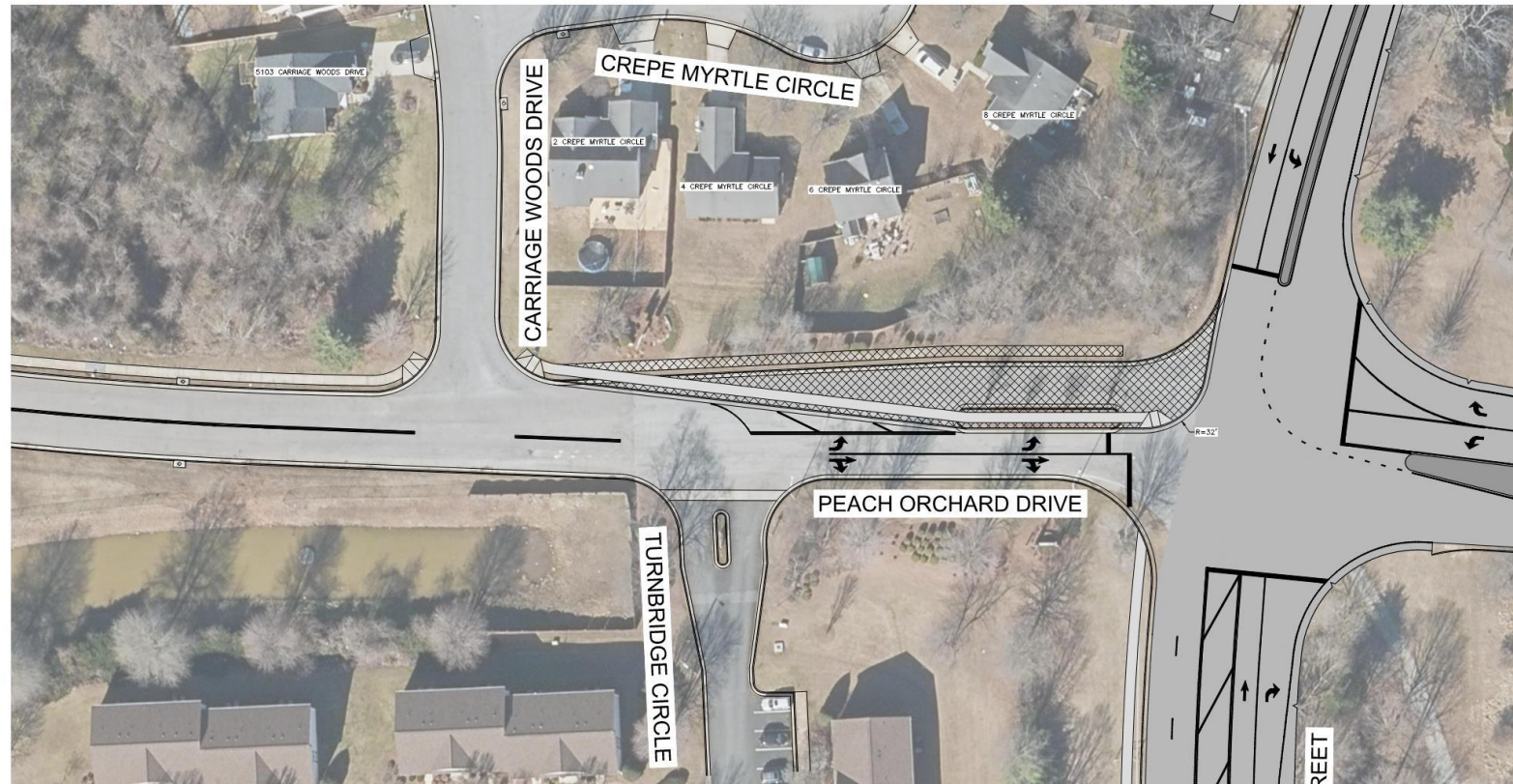
Bulbout (Corner Extension) Option at Mystic Oak Drive



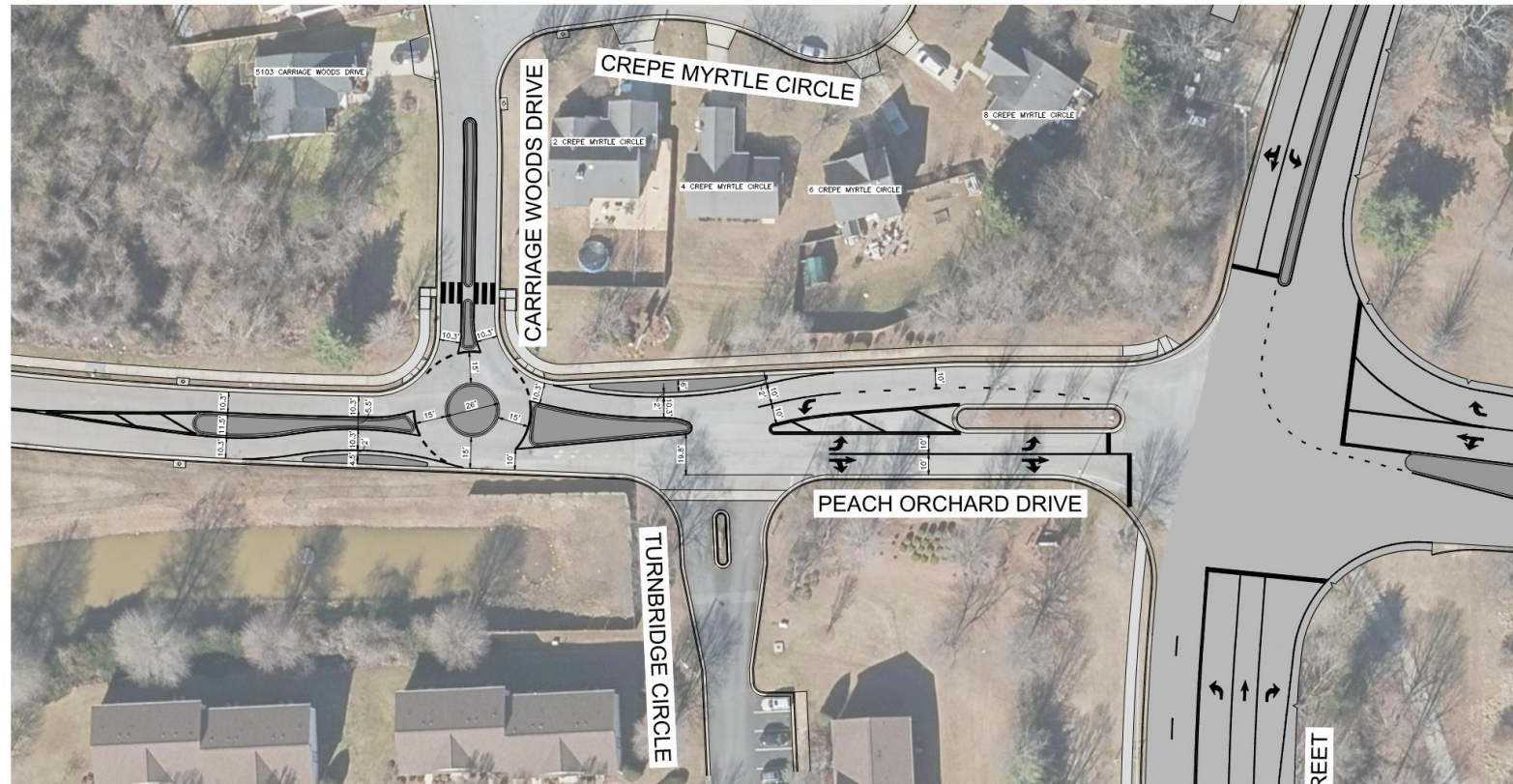
Carriage Woods Drive to Yanceyville Street



Partial Closure Option at Yanceyville Street



Mini-Roundabout Option at Carriage Woods Drive





Peach Orchard Drive Options

- Next Steps
- Let us know what you think...
 - [Take our survey at www.gsostreets.com/](http://www.gsostreets.com/)
 - Comments due Dec 30
- Follow-up meeting to discuss survey results



Questions/Comments

www.gsostreets.com

Chris Spencer

City of Greensboro – Department of Transportation

Engineering Division Manager

336 373-4368

chris.spencer@greensboro-nc.gov

