

Welcome!

Landscape Ordinance Committee

February 17th, 2020



AGENDA

I. Welcome

II. Review of *Proposed Changes to Landscape Ordinance*

III. Discussion of *Changes* and suggestions for additions/revisions

IV. Review process to achieve desired outcomes

V. Discuss first proposed change

Committee Members and city staff agree to:

- ✓ Show up on time and be prepared to actively contribute to the work of the Committee.
- ✓ Stay mentally and physically present during meetings/work sessions.
- ✓ Collaborate to resolve problems by respectfully challenging ideas NOT the person
- ✓ Listen with an open mind, avoid interrupting and side-bar conversations.
- ✓ Offer your unique perspective and experience, ask clarifying questions and stay curious, especially about perspectives/experiences different from your own.
- ✓ Consider multiple ways to achieve desired outcomes.
- ✓ Makes decisions by majority consensus.

Overview of
Ordinance Changes
Proposed by Staff

Landscaping: (Species Diversity)

Section: 10-4.1

- Incorporating plant diversity and native species into the required planting yards.
 - **Intent:**
 - Current ordinance allows for the installation of monocultures, which are susceptible to intense disease and insect infestations.
 - Installing several species, including some that are native to this area, would provide for more resilient, lower maintenance landscaping.

Landscaping:
(Species
Diversity)

Section: 10-4.1

- Reviewing the plant list to make sure the suggested plants meet the definition of canopy tree, understory tree and shrub along with the removal of any invasive species.

CBD / Urban Landscaping and Tree Conservation

Sections: 10-3.1

- Evaluating the use of Urban Landscape Regulations for street yards on constrained sites and for other developments located in an urban environment.
 - **Intent:**
 - Current ordinance has no requirements for landscaping or saving trees in CBD.
 - Trees would mitigate heat island effect, improve air quality, landscaping improves attractiveness to visitors, businesses and residents.

CBD / Urban Landscaping and Tree Conservation

Sections: 10-3.1

- Evaluating the need for and incorporating required landscaping and tree planting for sites located in the Central Business District or submission of “Fee in Lieu”.
 - **Intent:**
 - Parcels in or near downtown but not in CBD may be able to use the more flexible standards for landscaping.

Parking Lots

Sections: 10-2.5

- Addressing the current conflict between parking lot lighting (light poles) and trees to be planted in landscape islands.
 - **Intent:**
 - Trees planted in the same island as light poles may obscure light, prompting topping, improper pruning, or removal.

Parking Lots

Sections: 10-2.5

- Evaluating whether the number of canopy trees required in parking lots is sufficient or if the rate should be increased.
 - **Intent:**
 - Additional trees would further mitigate heat island effect, provide shade for users.

Single Family

Sections: 10-1.3

- Including provisions to document loss of tree canopy and the requiring of reforestation within single family subdivisions.
 - **Intent:**
 - Capturing data on tree removal helps understanding of urban forest health, aids in grant applications and directing mitigation efforts.
 - Low income neighborhoods disproportionately experience heat island and poor air quality due to lack of trees.

Tree
Conservation
Notice and
Flexibility

Section:
Article 12

- Incorporating provisions for the protection of specimen trees and to integrating them into the overall design of the site.
 - **Intent:**
 - Allows saving large trees that might otherwise be removed, maintaining diversity and benefits of mature canopy.
- Platting of tree conservation areas.
 - **Intent:**
 - Would provide a permanent, accessible record of TCA for future development and for urban canopy data.

Tree
Conservation
Notice and
Flexibility

Section:
Article 12

- Evaluating provisions to allow the submission of a “Fee in Lieu” for tree conservation areas.
 - **Intent:**
 - Would provide flexibility for sites where reforestation isn’t practical, or other circumstances where TCA is difficult.

Work in
Conjunction
with Water
Quality

- Incorporating tree conservation into some form of credit for the required water quality and water quantity improvements (BMP's).
 - **Intent:**
 - Would provide additional opportunities for preserving trees.

Enforcement

- Penalties beyond requiring replacement for topped or excessively trimmed trees.
 - **Intent:**
 - Would aid in education efforts and reduce the likelihood of topping.

Enforcement

- Maintenance agreement for IMUDs for keeping TCA and landscaping in compliance with ordinance.
 - Intent:
 - Would establish parameters for property managers for minimum maintenance for landscaping and TCA, and provide continuity of knowledge within an organization.



**QUESTIONS & SUGGESTIONS ARE
WELCOME**

PROPOSED Committee Work Process

STAFF PRESENTS

Rationale for change

Best practices

DRAFT wording

COMMITTEE REVIEWS

Merits & Challenges?

Intended & Unintended
Consequences?

Other research needed?

COMMITTEE RECOMMENDS

FINAL DRAFT proposed

2nd Reading

FINAL revision approved
by majority consensus

Discussion of First
Revision:
Species Diversity

- Incorporating plant diversity and native species into the required planting yards.
- Reviewing the plant list to make sure the suggested plants meet the definition of canopy tree, understory tree and shrub along with the removal of any invasive species.

Section 10-4.1

A. General

1. Plant species used in required planting yards must be native species or species of a locally adapted nature. Other species may be approved by the Planning and Community Development Director. Refer to the Landscaping and Tree Conservation Manual, which includes drought-tolerant species and species to be planted within 20 feet of overhead utilities.
2. The size of the required plant species is dependent on whether it is drought-tolerant. Incentives are provided to encourage the use of drought-tolerant plants in required landscape areas.







07 Iron Garden Rd
10/10/2023 10:10 AM
© 2023 Google



Google

Search
2788 MAN





Bank of America

© 2019 Google

Image capture: Apr 2019 © 2020 Google

Google



Gloomy Scale on Red Maple



Credit: Mississippi State University



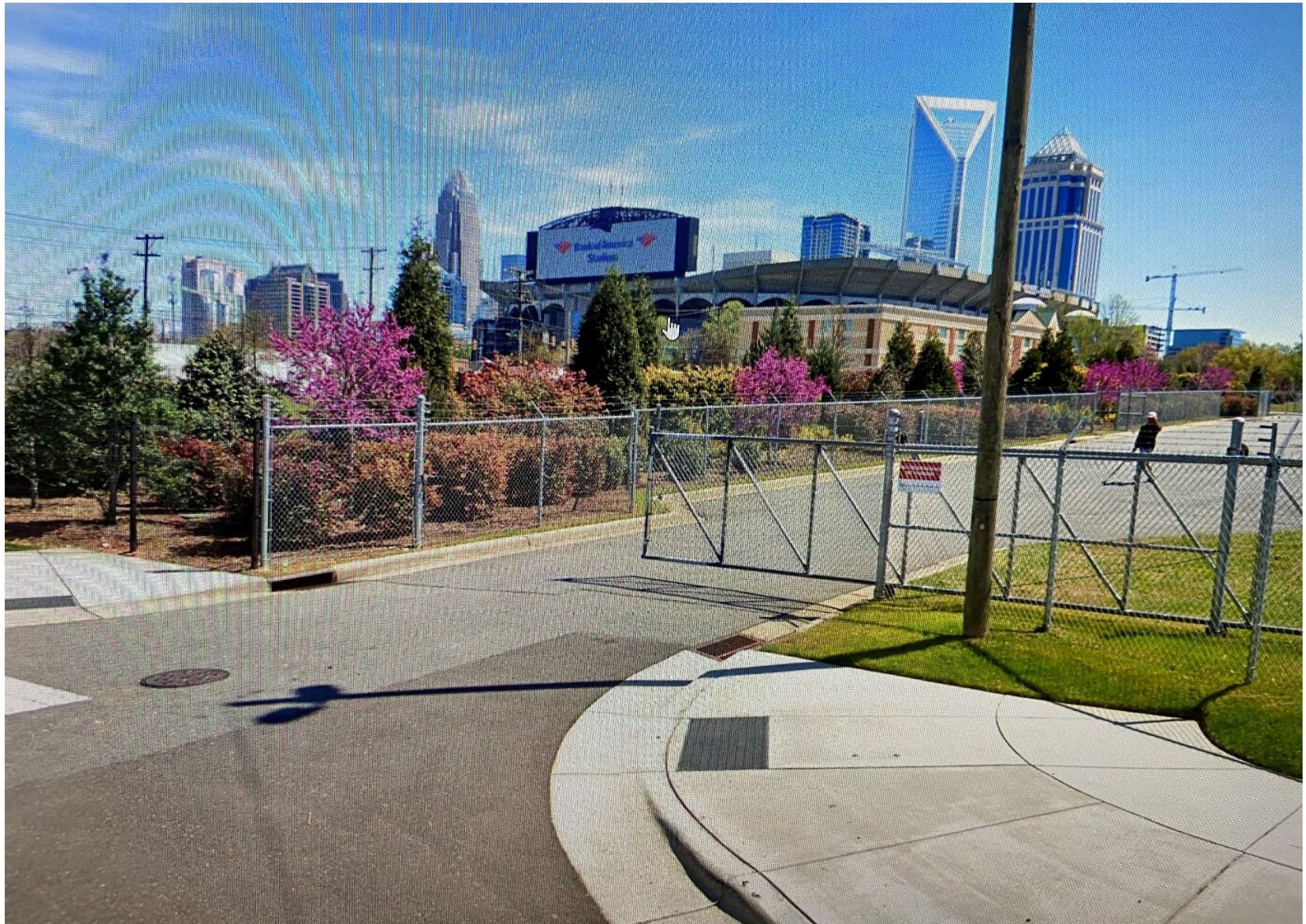
Credit: University of Arkansas

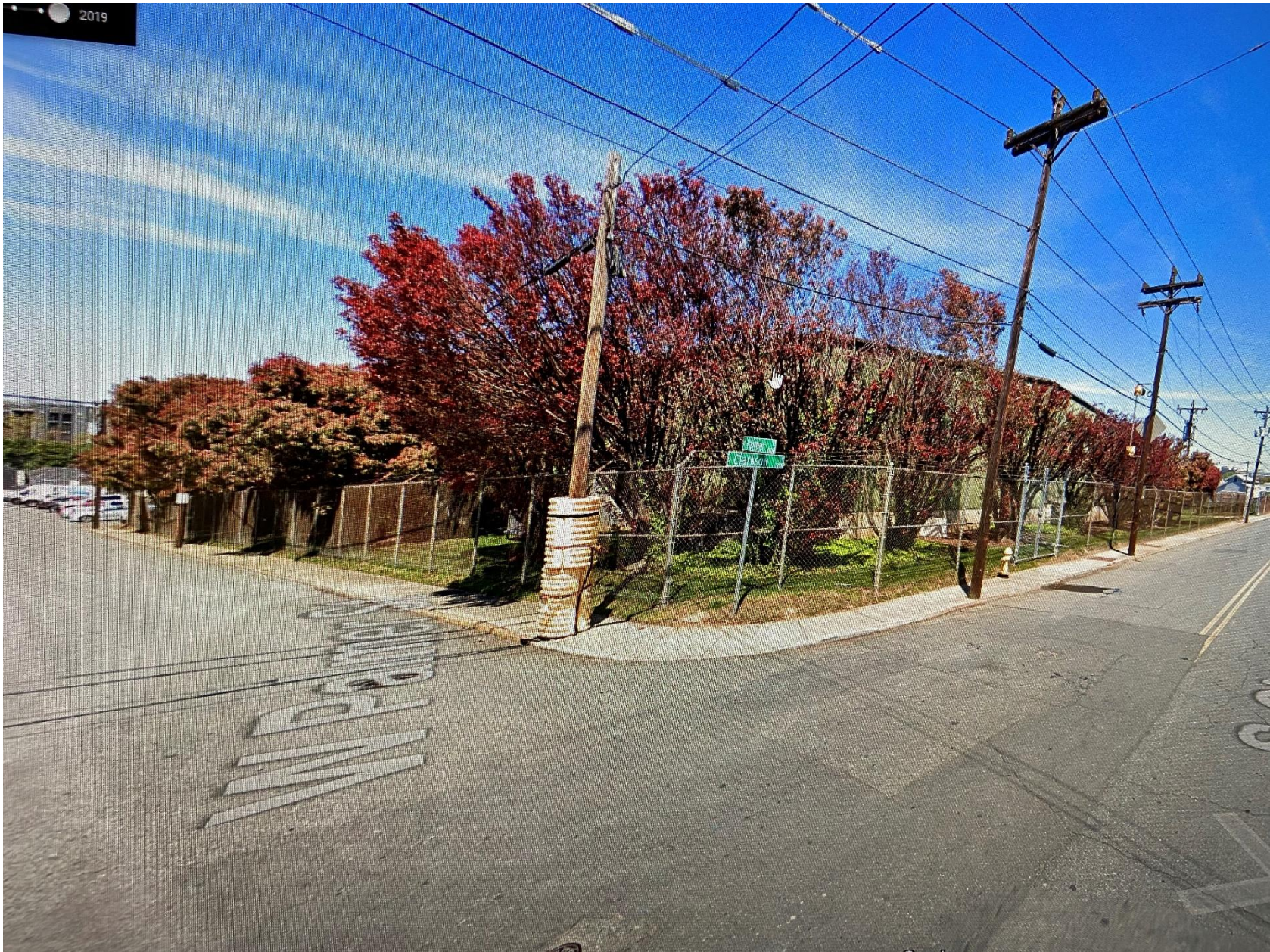
Crepe Myrtle Bark Scale

Charlotte

Sec. 21-96. - Tree planting requirements

(C): A minimum of 50 percent of new trees must be native species, and sites with more than 20 trees required will have to install multiple species pursuant to the tree ordinance guidelines.





High Point

5.5.6. - Plant Material Specifications

D. Species

Plant species used in required landscape yards must be native species or species of a locally adapted nature.

E. Species Diversity

To curtail the spread of disease or insect infestation in a plant species, new plantings shall comply with the following standards:

- When fewer than 20 trees are required on a site, at least 2 different species shall be utilized, in roughly equal proportions.
- When more than 20 but fewer than 40 trees are required to be planted on site, at least 3 different species shall be utilized, in roughly equal proportions.
- When 40 or more trees are required on a site, at least four different species shall be utilized, in roughly equal proportions.



Fayetteville

New Plantings

- g. The use of native, drought tolerant vegetation is encouraged to reduce dependency upon irrigation. Fifty percent of all new trees planted shall be native.
- h. To curtail the spread of disease or insect infestation in a plant species, and to add interest to the landscape, species variety shall be in proportion to the number of trees and shrubs planted. Nothing in this subsection shall be construed so as to prevent the utilization of a larger number of different species than specified in Table 30-5.B.3.e.2.h, Species Variety, below:

REQUIRED NUMBER OF TREES OR SHRUBS	MINIMUM NUMBER OF SPECIES
1—10	1
11—20	2
21—30	3
31+	4

Section 10-4.1

A. General

1. Plant species used in required planting yards must be native species or species of a locally adapted nature. Other species may be approved by the Planning and Community Development Director. Refer to the Landscaping and Tree Conservation Manual, which includes drought-tolerant species and species to be planted within 20 feet of overhead utilities.
2. The size of the required plant species is dependent on whether it is drought-tolerant. Incentives are provided to encourage the use of drought-tolerant plants in required landscape areas.

AMENDING CHAPTER 30 (LDO)
AN ORDINANCE AMENDING THE GREENSBORO CODE OF ORDINANCES WITH
RESPECT TO ZONING, PLANNING AND DEVELOPMENT

(Editor's Note: Added text shown with underlines and deleted text shown with strikethroughs)

Section 1. (Tree / Shrub Mix) That Section 30-10-4.1, Plant Materials, is hereby amended by adding a new Subsection (3) to read as follows:

3. Plant Species and Genus Mix:

a. To curtail the spread of disease or insect infestation in a plant species, new plantings shall comply with the following standards:

<u>Plant Species and Genus Mix:</u> Trees		
<u>Total Number of Trees Required on the Site</u>	<u>Minimum Number of Species Required</u>	<u>Maximum Percent of Each Genus Allowed</u>
<u>Less than 20</u>	<u>2</u>	<u>60%</u>
<u>20 to 40</u>	<u>3</u>	<u>40%</u>
<u>More than 40</u>	<u>4</u>	<u>20%</u>

<u>Plant Species and Genus Mix:</u> Shrubs		
<u>Total Number of Trees Required on the Site</u>	<u>Minimum Number of Species Required</u>	<u>Maximum Percent of Each Genus Allowed</u>
<u>Less than 20</u>	<u>2</u>	<u>60%</u>
<u>20 to 40</u>	<u>3</u>	<u>40%</u>
<u>More than 40</u>	<u>4</u>	<u>20%</u>

b. Nothing in this subsection shall be construed so as to prevent the utilization use of a larger number of different genuses than specified above.

Section 2. All ordinances in conflict with the provisions of this ordinance are repealed to the extent of such conflict.

Section 3. This ordinance shall become effective upon adoption.

NEXT MEETING:

Monday,

March 16 @ 3PM

[J. Edward Kitchen
Operations Center]

2602 S. Elm-Eugene St.

Lake Townsend Room

