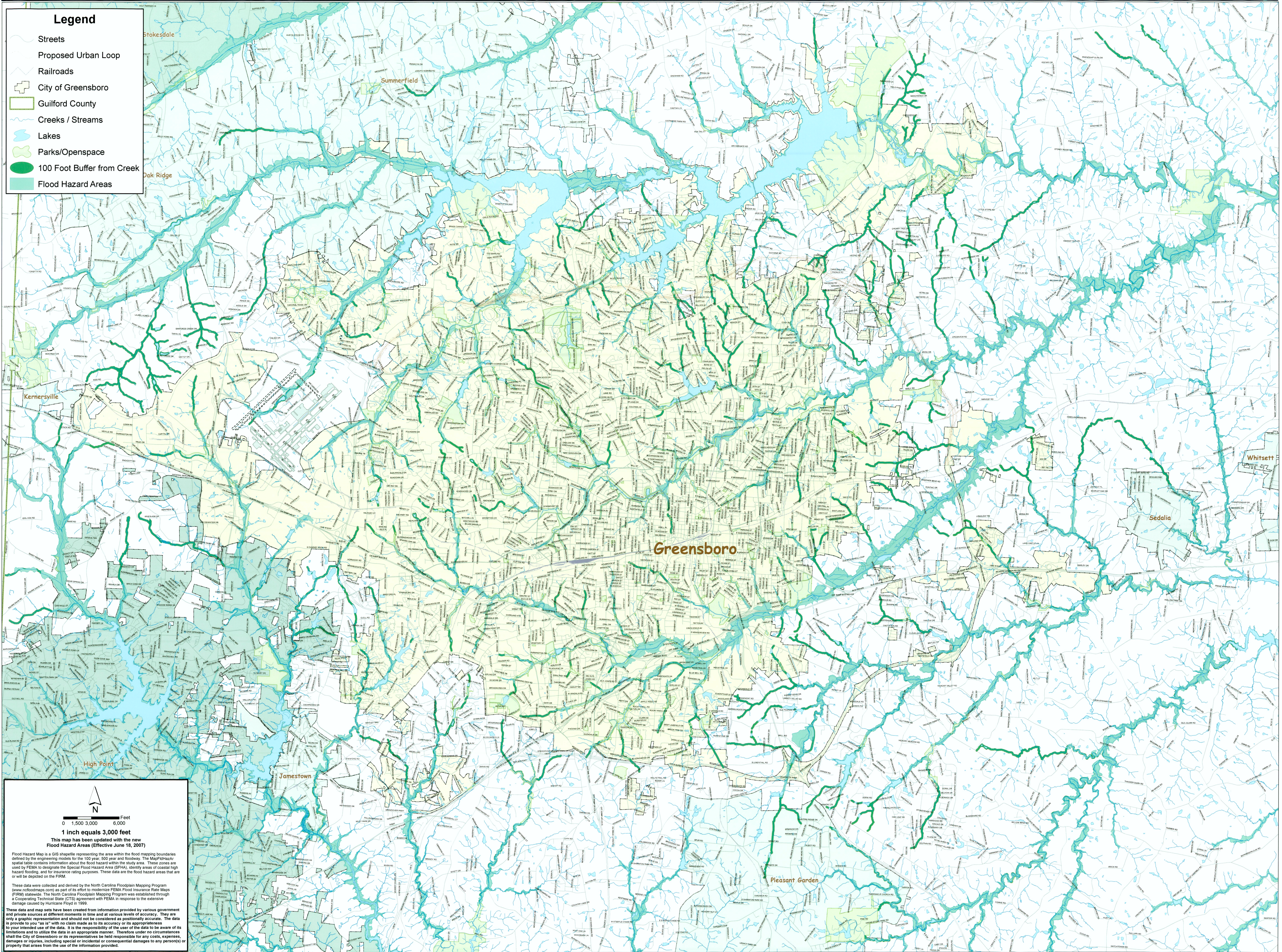


Drainageway, Openspace and Greenways Map - August 2008

Legend

- Streets
- Proposed Urban Loop
- Railroads
- City of Greensboro
- Guilford County
- Creeks / Streams
- Lakes
- Parks/Openspace
- 100 Foot Buffer from Creek
- Flood Hazard Areas



Greensboro

Stokesdale

Summerfield

Dak Ridge

Kernersville

Whitsett

Sedalia

High Point

Jamestown

Pleasant Garden

0 1,500 3,000 6,000
1 inch equals 3,000 feet

This map has been updated with the new Flood Hazard Areas (Effective June 18, 2007)

Flood Hazard Map is a GIS shapefile representing the area within the flood mapping boundaries defined by the engineering models for the 100 year, 500 year and floodway. The MapInfo data is provided to you "as is" with no claim made as to its accuracy or its appropriateness to your intended use of the data. It is the responsibility of the user of the data to be aware of its limitations and to utilize the data in an appropriate manner. Therefore under no circumstances shall the City of Greensboro or its representatives be held responsible for any costs, expenses, damages or injuries, including special or incidental or consequential damages to any person(s) or property that arises from the use of the information provided.

These data were collected and derived by the North Carolina Floodplain Mapping Program (www.ncfloodmaps.com) as part of its effort to modernize FEMA Flood Insurance Rate Maps (FIRM) statewide. The North Carolina Floodplain Mapping Program was established through a Cooperating Technical State (CTS) agreement with FEMA in response to the extensive damage caused by Hurricane Floyd in 1999.

These data and map sets have been created from information provided by various government and private sources at different moments in time and at various levels of accuracy. They are only a graphic representation and should not be considered as positionally accurate. The data is provided to you "as is" with no claim made as to its accuracy or its appropriateness to your intended use of the data. It is the responsibility of the user of the data to be aware of its limitations and to utilize the data in an appropriate manner. Therefore under no circumstances shall the City of Greensboro or its representatives be held responsible for any costs, expenses, damages or injuries, including special or incidental or consequential damages to any person(s) or property that arises from the use of the information provided.