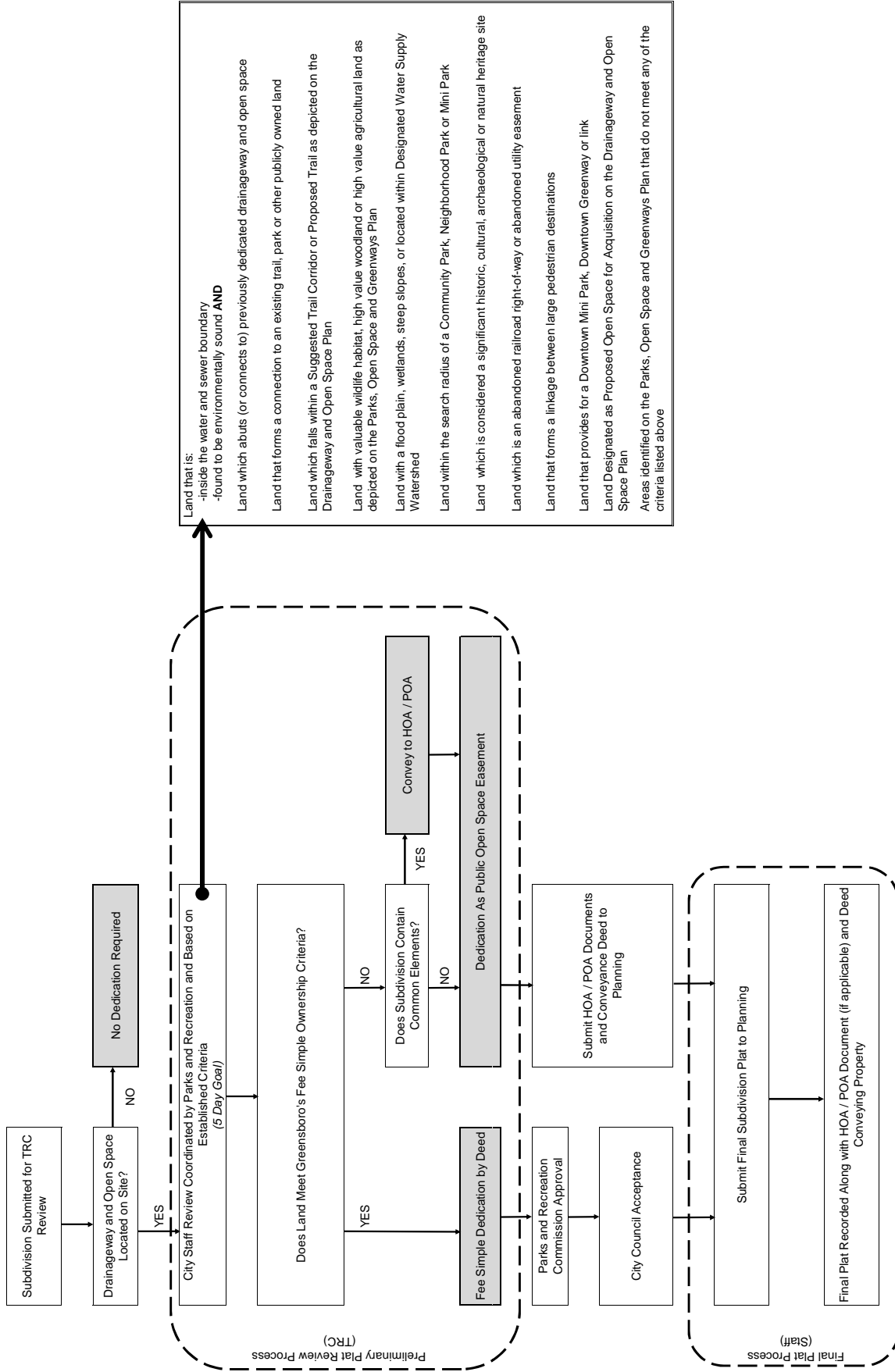


Drainageway and Open Space Dedication within Subdivisions

(Shift to Plan Review Process Vs. Submission of a Deed with Final Plat)



- Land that is:
- inside the water and sewer boundary
 - found to be environmentally sound **AND**
- Land which abuts (or connects to) previously dedicated drainageway and open space
 - Land that forms a connection to an existing trail, park or other publicly owned land
 - Land which falls within a Suggested Trail Corridor or Proposed Trail as depicted on the Drainageway and Open Space Plan
 - Land with valuable wildlife habitat, high value woodland or high value agricultural land as depicted on the Parks, Open Space and Greenways Plan
 - Land with a flood plain, wetlands, steep slopes, or located within Designated Water Supply Watershed
 - Land within the search radius of a Community Park, Neighborhood Park or Mini Park
 - Land which is considered a significant historic, cultural, archaeological or natural heritage site
 - Land which is an abandoned railroad right-of-way or abandoned utility easement
 - Land that forms a linkage between large pedestrian destinations
 - Land that provides for a Downtown Mini Park, Downtown Greenway or link
 - Land Designated as Proposed Open Space for Acquisition on the Drainageway and Open Space Plan
- Areas identified on the Parks, Open Space and Greenways Plan that do not meet any of the criteria listed above

"Fee Simple Dedication" is the conveyance of fee simple marketable title (unencumbered financially and environmentally) to the drainageway and open space to the City of Greensboro.

"Public Open Space Easement" is the conveyance of fee simple marketable title to the drainageway and open space to an owners' association (if applicable) with a dedicated easement to the city.

NOTE: Dedicated drainageway and open space may be used for drainage, open space, greenways, bikeways, trails, and other similar recreation activities, including park- and trail- related improvements in accordance with applicable regulations.