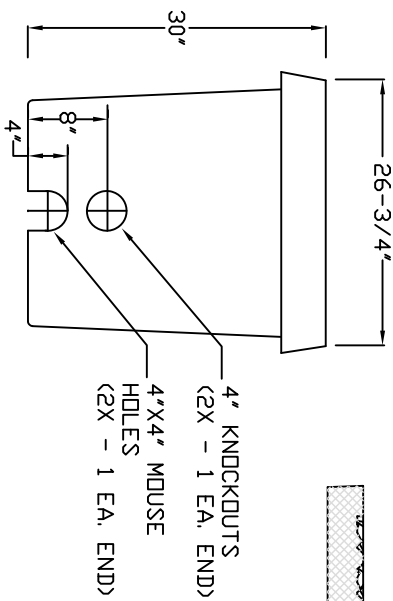
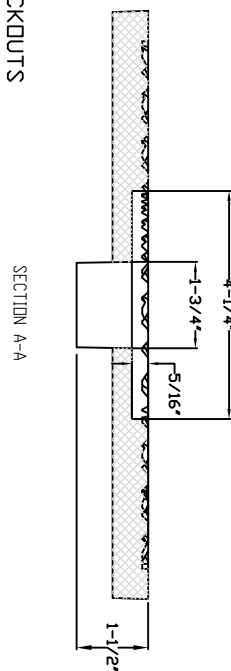


SECTION



END VIEW



SECTION A-A

BOX SIZE: 24' WIDE x 36' LONG x 30' DEEP

MATERIAL: FIBERGLASS REINFORCED POLYMER CONCRETE AND FIBERGLASS REINFORCED POLYMER

COVER TYPE: TIER 5 IS REQUIRED FOR NON-TRAFFIC BEARING AREAS
TIER 15 IS REQUIRED FOR TRAFFIC BEARING AREAS

**DUE TO VARIATIONS IN CASTINGS OF DIFFERENT MANUFACTURER'S, DIMENSIONS SHALL BE WITHIN REASONABLE TOLERANCES AS PRE-APPROVED BY GREENSBORO WATER RESOURCES DEPARTMENT AND/OR FIELD INSPECTOR PRIOR TO INSTALLATION

APPROVED METER BOXES

- CDR / QUAZITE AS MFG. BY HUBBELL POWER SYSTEMS
- HIGHLINE PRODUCTS

MEETS ASTM C857 A-16 STANDARDS

DESIGN LOADS - BOX & COVER		SIDE PSF	
LIVE LB./WHEEL	LIVE + IMPACT LB./WHEEL	30/80	
16,000	20,800		
TEST LOADING SHALL MEET A MINIMUM SAFETY FACTOR OF 1.5 - ASTM C497			

GSO-10

REVISED
06-07-21

**Meter Box and Cover
for 1 1/2" and 2" Meters**

**City of Greensboro
Water Resources Department**