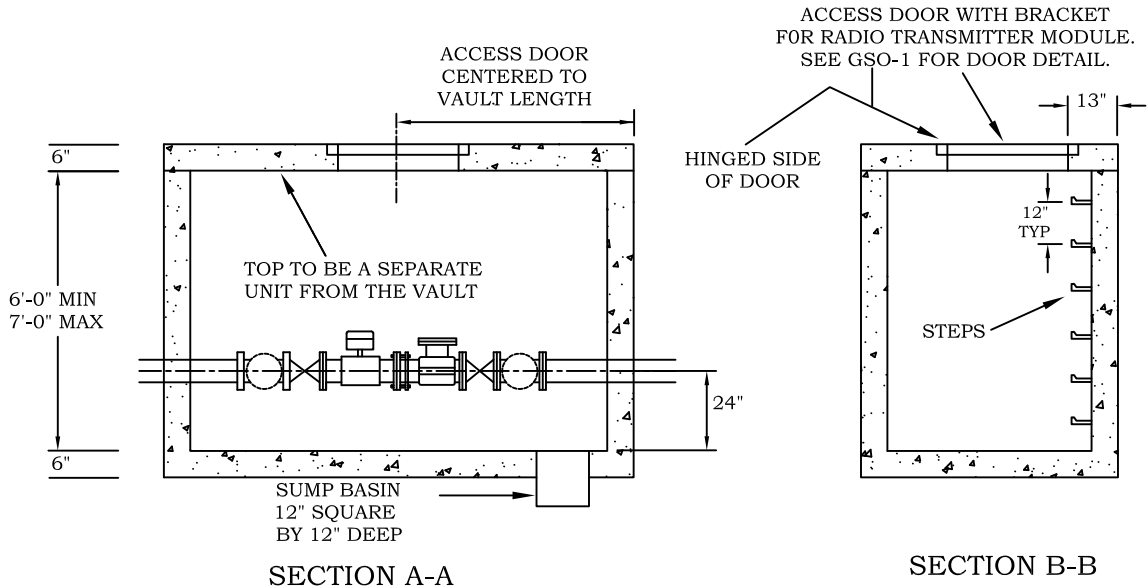


ACCESS DOORS TO BE 36" x 36" ALUMINUM WITH LIFT SPRINGS AND SLAM LOCK MECHANISM. ALL HARDWARE MANUFACTURED OF STAINLESS STEEL. USE U.S. FOUNDRY APS 300, OR APPROVED EQUAL.

TEST CONNECTION:
 INSTALL AN IPT SADDLE WITH A 6" NIPPLE AND A 2" WHEEL VALVE.
 6" evoQ4 - 2" CONNECTION
 8" evoQ4 - 2" CONNECTION



DIMENSIONS		
LETTER	6" Meter	8" Meter
A	9.5"	5.5"
B	16"	18"
C	10.5"	11.5"
D	18"	18"
E	18"	20"
F	46.5"	49.5"
G	89"	97"

- DO NOT CONSTRUCT VAULTS IN LOAD BEARING AREAS.
- VAULT WALLS, TOPS AND FLOORS SHALL BE MANUFACTURED OF REINFORCED CONCRETE PANELS, OR POURED CONCRETE FLOOR, BLOCK WALLS AND REINFORCED PRECAST CONCRETE TOP.
- IF BLOCK WALLS ARE USED, OUTSIDE OF WALLS SHALL BE COATED WITH THORO-SEAL, OR APPROVED EQUAL.
- INSTALL A 2" ELECTRIC SUMP PUMP AND PIPE TO OUTSIDE OF VAULT. A 4" GRAVITY DRAIN CAN BE USED IF THERE IS SUFFICIENT RELIEF FOR DRAINAGE.
- BY-PASS LINE IS THE SAME SIZE AS THE METER AND MUST BE FURNISHED BY THE CITY OF GREENSBORO.

APPROVED MANUFACTURERS: OCTAVE, HONEYWELL, evoQ4

RMN

CITY OF GREENSBORO
 WATER RESOURCES DEPT.

6" & 8" METER
 INSTALLATION
 W/BY-PASS

GSO-20

REVISED
 06-07-21