

Parks and Recreation Mission and Goals

Mission Statement

“The mission of the Greensboro Parks and Recreation Department is to provide diverse year-round leisure opportunities through the preservation of open space, park settings, recreational facilities and programs for the citizens of Greensboro. The benefits of leisure services are especially designed to meet the physical, mental, cultural, and social needs of our residents and visitors to our community, while enhancing the overall quality of life in Greensboro.”

Goals (based on 2006-2007 Department Workplan)

- ✓ *Goal:* Continue the application of safe design principles intended to make neighborhood parks safer and in order to increase citizen usage.
- ✓ *Goal:* Youth First will continue encouraging and fostering partnerships with community and youth agencies that will strengthen collaboration efforts in order to provide safe environments for the youth.
- ✓ *Goal:* Through the Department’s Safety and Training Division and Committee, provide safe facilities and environments for participants and staff.
- ✓ *Goal:* To update the Youth Citizens Police Academy and the Youth Citizen’s Fire Academy by using evaluation and focusing on career development and teaching public safety.
- ✓ *Goal:* Develop programs, tournaments and leagues for families, ladies, seniors, industries and colleges that will enhance the overall operation of Gillespie Park and be inclusive of all cultural and economic groups.
- ✓ *Goal:* Increase and improve our cultural diversity programs through outreach and program accessibility.
- ✓ *Goal:* Emphasize each individual’s right to participate by increasing participation numbers and facility use opportunities among currently low serviced groups (i.e. persons with disabilities, multicultural groups, minority groups, and the youth 3-6 years old.).
- ✓ *Goal:* Maintain the number of partnership agreements and foster improved community relationships with overall intent of providing a wider variety of athletics opportunities for participants.
- ✓ *Goal:* Continue a high level of more inclusive and family oriented programs and services in Mainstream Resources Unit.
- ✓ *Goal:* Improve the quality and number of the Senior Programs

- ✓ *Goal:* Increase participation in Greater Greensboro Senior Games and SilverArts by offering off-season training and workshops.
- ✓ *Goal:* To Increase the awareness and membership of GYC through a new marketing campaign.
- ✓ *Goal:* To plan programs and activities citywide for teens utilizing Parks & Recreation facilities based on individual needs.
- ✓ *Goal:* Research and develop a new athletic program in partnership with the MainStream Resources Unit, Athletic Section and Pony Baseball, Inc.
- ✓ *Goal:* Create a support group for the Greensboro Farmers' Curb Market
- ✓ *Goal:* Assist the City in recruitment and retention of quality business in order to improve the quality of life in Greensboro.
- ✓ *Goal:* Assist various community groups in increasing the number of non-business hour visitors to the center city and improving the overall economic health of downtown Greensboro
- ✓ *Goal:* To perform strategic and long range planning functions for recreation facilities, open space and city park acquisition, design and development.
- ✓ *Goal:* Strengthen the Adventure Programming at the Lakes in order to attract regional attention and additional visitors participating in activities such as the Flying Frog and kayaking programs.
- ✓ *Goal:* To increase capacity and visibility of Greensboro Farmers' Curb Market
- ✓ *Goal:* To further develop David Caldwell Historic Park as a visitor destination through the construction of a privately funded Visitor Center and Mill
- ✓ *Goal:* Enhance the Greensboro Sportsplex in order to attract regional events for individuals with disabilities.
- ✓ *Goal:* Continue with the National Accreditation process by dedicating the necessary resources to meet and exceed national standards set forth by the National Parks and Recreation Association.
- ✓ *Goal:* Promote training opportunities for all employees in order to foster diversity and career development for future promotion.
- ✓ *Goal:* Develop a system to maintain our Park facilities through a strategy of controlled use and environmentally protected areas.

- ✓ *Goal:* Plan and provide a safe and comprehensive system of recreational trails for the citizens of Greensboro.
- ✓ *Goal:* Coordinate with Facilities and Engineering Phase I implementation of the Barber Park Master Plan
- ✓ *Goal:* Implement the design of the Gateway Garden
- ✓ *Goal:* Maintain and improve the department's general financial condition and ability to respond effectively to changes in community service demands and desires and to secure sufficient funding and resources to maintain existing facilities, resources and viable programs.
- ✓ *Goal:* Utilize the Department's Master Plan and Work plan as a guide for programs, facility development, and customer service delivery while adhering to the City's strategic goals.
- ✓ *Goal:* To implement a Facilities Inventory & Improvement Program (FIIP) in cooperation with the Field Operations Department and Facilities with the understanding that this Plan will become an integral part of the Department's CIP process.
- ✓ *Goal:* Work with Guilford County and the Bryan Foundation to begin construction of phase one for the city/county owned Bryan Park at Guilford County.
- ✓ *Goal:* Provide the necessary management to fully achieve the priorities identified by the Parks & Recreation Department, the City Manager's Office, and City Council.
- ✓ *Goal:* Research, analyze and implement customer friendly registration processes enabling the internal tracking of participants to better understand who our customers are and how they utilize our facilities and programs.
- ✓ *Goal:* Enhance customer service and efficiency in the department.
- ✓ *Goal:* Continue to provide a staff retreat for Center Supervisors for 2006/07 in order to promote professional growth and train PT staff with center responsibilities to meet accreditation standards.
- ✓ *Goal:* Continue to expand staff development in the MainStream Resources Unit.

Greensboro City County Mission and Goals

Mission Statement

“We exist to partner with the community to build the desired quality of life for Greensboro. All of our actions are guided by our commitment to and measured by our success in bringing public trust and the future we and the community desire. Critical to our success is maintaining a work environment, which fosters employees’ commitment to public service and making a difference in the lives of citizens.”

Vision Statement

“The City of Greensboro organization will live its core purpose and core values. We will work in trust with the community we serve and in trust within ourselves. We will partner with others, respect all opinions and concerns, reflect the community we serve and strive to maintain a shared sense of goals. We will have pride in employment with the City organization and will enjoy a high sense of commitment to public service. We will focus on collaborative efforts and strategic planning with elected officials and the community to ensue a desirable future.”

Core Purpose

“We exist to partner with the community to build the desired quality of life for Greensboro. All of our actions are guided by our commitment to and measured by our success in bringing public trust and the future we and the community desire. Critical to our success is maintaining a work environment, which fosters employees’ commitment to public service and making a difference in the lives of citizens. Therefore, building public trust is core to the existence of the organization. The central methods for building public trust include partnering with the community to build the desired quality of life and employee commitment to public service. Our core values define our organizational character. Discovery of the core values of the City of Greensboro was made through a series of exercises to identify the priorities and beliefs of the organization. The Core Values include: *Honesty, Integrity, Stewardship, and Respect.*”

City of Greensboro

FY 2006-07

Priorities

The following list identifies the city’s seven priorities for the year. The first five items are restatements of City Council’s priorities. The sixth and seventh items represent ongoing efforts to improve the organization. Note that Economic Development has been added as a council strategic priority. This list simply condenses existing sets of priorities in an attempt to more effectively communicate them.

I. Public Safety

II. Community Relations

A. Improved race relations

- B. Excellent customer service
- C. Effective communications with public and Council

III. Natural Resources and Growth Management

- A. Water and wastewater supply planning
- B. Comprehensive planning
- C. Housing
- D. Neighborhood planning

IV. Maintenance of City Assets

- A. Physical plant maintenance
- B. Employee development
- C. Long-term asset planning

V. Economic Development

VI. Stewardship of Resources

- A. Appropriate technology
- B. Funding equity
- C. Performance planning and measurement
- D. Alignment of services

VII. Organizational Improvement

- A. Customer Service
- B. Improved internal communications
- C. Increased interdepartmental cooperation
- D. Appropriate technology
- E. Focus on purpose, values, and vision

Arts

- Adult Community Performing Ensembles
- Art Alliance
- Cultural Diversity Dance Classes and Specialty Classes
- Drama classes
- Educational/Performing Ensembles for Youth
- Entertainment co-sponsorship collaborations
- Greensboro Playwrights Forum
- Greensboro Children's Theater
- Livestock Players Musical Theater
- OPUS and MUSEP Concert Series
- Performing Opportunities
- Spring Dance Review
- Traditional, Suzuki & Kindermusik Music Instructions
- Youth/Teen and Adults Dance Programs

Athletics

- Adult Sport
- Bitty Ball/ T-Ball
- Cheerleading
- Co-op Athletics Sporting Programming
- Drop-in Field Use
- Field Rentals
- "Over 45" Softball
- PAYS & NYSCA Program
- Pool Usage by Outside Organizations
- Swimming Classes
- Swimming Pools/Public Swimming
- Water Aerobics for Seniors and Adults
- Youth Sports (Baseball, Football, Soccer)

Beautification

- Adopt-A-Park
- Arbor Day Programs
- Bicentennial Garden
- Bicentennial Garden "Parisian Promenade"
- Bog Garden – "Bayou Bash"
- Bog Garden (General)
- Business Landscape Awards Program
- City Beautiful / Greensboro Beautiful Administrative Programs
- Clean Campus Program
- Clean Community Forum
- Community Tree Planting & Reforestation Projects "Neighborwoods"
- David Caldwell Historic Park
- Gateway Garden

- Greensboro Arboretum
- Greensboro Arboretum – “Art in the Arboretum”
- Greensboro Beautiful Inc.
- Greensboro Farmers’ Curb Market
- Horticulture Education Programs
- Landscaping Projects
- Litter Cleanups (2); Great American Cleanup and Big Sweep Waterway Cleanup
- Litter Index
- Memorial/ Honor Tree Program

Bur-Mil Park

- Day Camps – Spring and Summer
- Environmental Education Classes
- Family Aquatic Center
- Golf Program – Course & Driving Range
- Loan A Rod Program
- Precision Golf
- Swim Lessons
- Tennis Lesson
- Triad Youth Golf Foundation – Youth Golf Program
- Wildlife Education Center

Caldcleugh Multicultural Arts Center

Adult Classes

- Adult Spanish Classes
- African Drumming Circle
- Beginning and Intermediate Sewing classes
- Tai-Chi and Self Defense classes for Adults and Seniors

Children’s Classes and Programs

- African Drumming
- After-school Arts and Arts Fun Fests
- Summer Arts Camp
- Tai-Chi and Self Defense Classes For Children

Facility Rental and Usage

Special Events

- Caldcleugh Annual Kwanzaa Celebration
- National Night-Out

Gillespie

- City Industrial League
- Free Lesson Fridays
- Gillespie Invitational
- Parent/Child Golf Tournament

- Regular Play
- TYGR PAWS Junior Golf Clinic
- USA/PGA TOUR JR. CLINICS

Greensboro Youth Council

- Artistry Awards
- Ghoulash! Halloween Festival
- Greensboro Youth Council
- GYC Carnival
- High IQ Bowl
- Santa's Workshop
- Sexual Attitudes
- SLRP (Summer Library Reading Program)
- Youth Citizens Police Academy & Youth Citizens Fire Academy
- Youth Leadership Greensboro

Lakes and Trails

- Annual Haunted Trail
- Annual Flying Frog Adventure Race
- Animals
- Animals interpretive hikes
- Beginner Outdoor Skills Camp
- Edible and Medicinal Plants of the Piedmont
- Environmental Fair
- Fishing
- Fishing Opportunities
- Fossils
- Hunter Safety Program
- Hydrological Cycle
- Insects
- Lake Ecology
- National Fishing Week
- National Trail Day
- Native American Culture
- Orienteering
- Plant Identification
- Project Hug-A-Tree and Survive
- Rocks & Minerals, Plants
- Rowboat, kayak, canoe, and sailboat rentals
- Snakes
- Soils
- Taxidermy
- Tracking

Mainstream Resources

- Arts for All
- Baseball Game Outing
- Bingo Parties
- Bowling
- College Basketball Outing
- Cookouts
- Cultural Outings
- Day Trips
- Dining Outing
- GTCC After School Program
- Movie Outings
- Seasonal Dances
- Shopping Outings
- Summer Day Camp - Camp Joy
- VI Stretch -Physically Disabled /Chair Exercise Class
- Walking to Wellness
- Water Exercise/Therapy
- W/C Exercise class

Regional Parks

Barber Park

- Frisbee Golf

Country Park

- Bark Park
- Battle Re-enactment
- Car Show
- Carolina Cup
- Children's Playgrounds
- Fishing
- GNAA Pow wow
- Gobbler
- Heartwalk
- Light the Night
- Pedal Boats
- Rotary Ride
- Veterans Memorial
- Wild Turkey Fest

Hagan Stone

- Camp Joy Swimming Pool
- Camping
- Classes
- Community Fishing Program
- Cross Country Courses
- Environmental Education

- Recreation Opportunities (Boats, canoes, pedal boats, mini-golf, swimming, trails, lakes and open areas)
- Rental Services (Camp Joy Activity Center, Chapel and Camp Joy Pool)

Hester Park

- Community Fishing Program
- Exercises & Fitness trails
- Recreational Opportunities- rentals

Tannenbaum Historical Park

- Battle of Guilford Courthouse – Anniversary Commemoration
- Explore History Programs
- Guided Tours
- July 4th Declaration of Independence Celebration

Seniors

- AHOY (Adding Health to Our Years)
- Dances
- Greater Greensboro Senior Games and Silver Arts
- Kung Fu Classes
- Line Dancing Classes
- Ping Pong Club
- Seasonal/ Special Events - Fall Harvest, Soup & Potato Bar
- Senior League Series (FYI)
- Senior Swim
- Seniors Ambassadors Choral Group
- Seniors Bowling League
- Seniors Hiking Club
- SMAC (Senior Making Activities Count)
- Smith Senior Center Fitness Room
- Social Club for Ballroom Dancing
- Square Dancing
- Water Aerobics Classes

Shelter Reservations

- Regional Parks Shelter Reservations

Sportsplex

- Annual Back to School Open House Celebration
- Badminton - Adult Open Play
- Basketball - Adult Leagues
- Basketball - Youth Leagues
- Basketball - Youth Clinics
- Basketball - Youth Summer Camps
- Basketball - Youth Holiday Camps
- Basketball - Individual Training

- Basketball - Hispanic Leagues
- Basketball - Youth Travel Teams
- Basketball - Court Rentals
- Basketball - Drop In Open Play
- Basketball - Youth Tournaments
- Basketball - Adult Tournaments
- Birthday Parties
- Cheerleading - Youth Classes
- Cheerleading - Youth Competitions
- Conference Room Rentals
- Corporate Cup
- Corporate Meetings
- Daycare Outings
- Dodge Ball - Youth Leagues
- Dodge Ball - Adult Leagues
- Facility Rental - Special Event
- Facility Rental - Team Practice
- Football - Skills Camps
- Football - Combines
- Golf - Skills Clinics
- Golf - Individual Lessons
- High School Dance
- High School Graduation Party
- Inline Roller Hockey - Youth Leagues
- Inline Roller Hockey - Adult Leagues
- Inline Roller Hockey - High School Leagues
- Inline Roller Hockey - Youth Summer Camps
- Inline Roller Hockey - Holiday Camps
- Inline Roller Hockey - Youth Clinics
- Inline Roller Hockey - Youth Tournaments
- Inline Roller Hockey - Adult Tournaments
- Inline Roller Hockey - Travel Team Practices
- Inline Roller Hockey - Rink Rentals
- Inline Roller Hockey - Drop In Open Play
- Personal Training - Youth Classes
- Personal Training - Adult Classes
- Personal Training - Individual Training
- Power, Speed, & Agility Training - Youth Classes
- Power, Speed, & Agility Training - Individual Classes
- Power, Speed & Agility Training - Adult Classes
- Soccer - Player Development Program
- Soccer - Skills Clinics
- Soccer - Adult Leagues
- Soccer - Youth Leagues

- Soccer - Soccer Tots Program
- Soccer - Soccer Touch Program
- Soccer - Individual Training
- Soccer - Tournaments
- Soccer - Field Rentals
- Soccer - Drop In Open Play
- Soccer - Holiday Camps
- Soccer - Summer Camps
- Tennis - Individual Lessons
- Tennis - Skills Clinics
- Volleyball - Adult Coed 4's League
- Volleyball - Adult Coed, Men's & Women's 6's Leagues
- Volleyball - Youth 6's Leagues
- Volleyball - High School 6's Leagues
- Volleyball - Holiday Camps
- Volleyball - Skills Clinics
- Volleyball - Summer Camps
- Volleyball - Junior Olympics Team Practices
- Volleyball - USAV Adult Team Practices
- Volleyball - Tournaments
- Volleyball - Court Rentals
- Volleyball - Drop In Open Play
- Volleyball - Coaches Clinics
- Volleyball - Referee Clinics
- Volleyball - Scorekeepers's Clinics
- Volleyball - Individual Training
- Volleyball - Dig 4 Kids Fundraising Clinic
- Volunteers - Junior Olympics Coaches
- Volunteers - Basketball Travel Team Coaches
- Weight Training - Individual

Youth First

- Acting Classes
- Basketball Team
- Boo Bash
- Chess Club
- Football Camp
- Girls Inc
- Guilford Teen Advocacy Consortium
- Halloween Pumpkin Carving and Candy Hunt
- Get in the Know
- Hope Project
- Mother's Day Essay
- Photo Voice

- Pool Pals
- Student Improvement Award
- Summer Fun Day
- Summer Playground Program
- Sweetheart Dance
- Talent Show Try-outs
- Teen Advisory Board
- Teen Grantmaking Council
- Teen Multicultural Health Fair
- Teen Summer Camp
- Teen Super Bowl Party
- Y-Teens: A Healthy Start
- Tiny Tots Easter Candy Hunt and Egg Decorating
- Youth First Teen Summit

Recreation Centers

All Centers

- After School Program
- Summer Day Camp
- Youth Basketball
- Youth Football

Brown Center

- Aerobics
- Dog Obedience Classes
- Karate
- Mocha Moms
- Open Gym

Craft Center

- Community Goodwill Club
- Continuing After Spinal Trauma
- Craft Friendly Senior Group
- ESOL Program
- Family Fun Night
- Parents Night Out

Glenwood Center

- "Little Kicks" Indoor Soccer
- Creative Sports & Fun Fitness
- Chinese Association
- Delta H Fencers Club
- Dixie Derbies Square Dancers
- Fencing Class
- Filipino-American Club of the Triad
- Focus Group
- Glenwood Neighborhood Association

- Gold Diggers Stock Club
- Success Parent Support Group
- Taekwondo Class
- Triad Western Dancers
- Youth Basketball Camp
- Youth Football Camp

Leonard Center

- Badminton
- Bead Society
- Boy Scouts
- Bridge
- Judo
- Karate
- Kiwanis
- Mothers & More
- Laleche League
- Piedmont Triad Woodturners
- Triad Outdoor Photography

Lewis Center

- AARP
- Belly Dancing
- Carolina Dog Training
- Carolina Ladybugs
- Clogging
- Coin Club
- Greensboro Rose Society
- Lewis Center Football Camp
- Martial Arts
- Nat Greene Fly Fishers
- Open Table Tennis
- Scottish Country Dancing
- Tangle Foot Square Dancing

Lindley Center

- Animal Rescue/Foster Care
- ARC of Greensboro Self Advocacy Group
- Book Buddies
- Breakfast With Santa
- Carolina Kennel Club
- Creative Movement
- Greensboro Stamp Club
- GTCC Knitting Class
- Halloween Carnival
- Karate
- Lindley Lock-ins

- Monet for Minis
- Pilates
- Swinging Stars Square Dance
- Taking Off the Pounds Society (T.O.P.S.)
- The Mentor Network
- Tiny Tots Basketball
- Tiny Tots Flag Football
- Tiny Tots Soccer
- Toastmasters
- Tot Time
- Triad Golden Retriever Rescue
- Wednesday Walkers

Peeler Center

- Concerned Citizens of Northeast Greensboro
- Open Gym
- Residents of Woodmere Park

Trotter Center

- Step Aerobics
- Women's Self Defense

Warnersville Center

- Computer Program
- Craft
- Fitness
- Girl Scouts
- Karate Dojo
- SAT Prep Program
- Summer Lunch Program
- Terrell Street Community Watch
- Warnersville Advisory Council
- Youth Fitness Program
- Youth Football Skills Clinic

Windsor Center

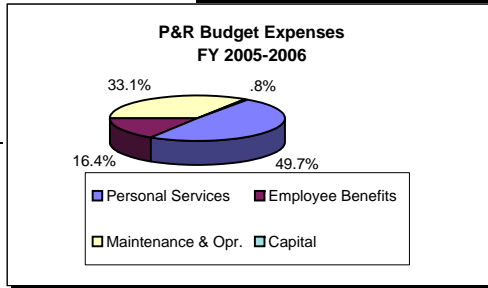
- Karate
- Kickboxing Aerobics
- Windsor Center Drill Team
- Windsors' No-Limit Dancers
- Young Life

Greensboro Parks and Recreation 2005-2006 Budget

Year-End Report

Type of Expense

Personal Services	11,125,703
Employee Benefits	3,648,369
Maintenance & Opr.	7,755,756
Capital	112,307
Total	22,642,135



- - - - Division Summary - - - -

<u>Division</u>	<u>Direct Cost</u>	<u>Debt Service</u>	<u>Indirect P&R Cost</u>	<u>Indirect Org. Cost</u>	<u>Total Cost</u>	<u>Revenue</u>	<u>Recovery</u>
Administration	1,979,718	14,041	-	187,449	2,181,208	48,660	2.23%
Gillespie	549,479		48,044	52,027	649,550	212,625	32.73%
Sportsplex	1,037,332	487,629	90,699	98,220	1,713,880	591,507	34.51%
City Arts	876,736		76,658	83,014	1,036,407	111,119	10.72%
Programs & Community Services	942,062		82,369	89,199	1,113,630	92,483	8.30%
Community Centers	2,516,470	1,077,283	220,028	238,272	4,052,052	532,312	13.14%
Pools	558,874		48,865	52,917	660,656	72,253	10.94%
Memorial Stadium	338,441		29,592	32,045	400,078	22,449	5.61%
Hagan-Stone Park	434,667		38,005	41,156	513,829	99,805	19.42%
Hester Park	332,098		29,037	31,445	392,580	12,340	3.14%
Country Park	371,710		32,501	35,195	439,406	30,052	6.84%
Jaycee Park	186,308		16,290	17,641	220,238	0	0.00%
Athletics	865,971		75,716	81,994	1,023,682	211,491	20.66%
Regional Parks Administration	18,226		1,594	1,726	21,545	3,898	18.09%
Bur-Mil Park	895,090		78,262	84,751	1,058,104	972,355	91.90%
City Lakes & Trails	803,249	27,743	70,232	76,056	977,280	176,597	18.07%
Barber Park	439,634	501,835	38,439	41,627	1,021,535	61,086	5.98%
Park Equipment Maintenance	267,774		23,413	25,354	316,541	0	0.00%
Maintenance & Development	4,855,998	218,614	424,585	459,789	5,958,986	131,439	2.21%
Landscape Maintenance	2,223,585	169,528	194,419	210,540	2,798,072	70,325	2.51%
Tannenbaum Park	277,431		24,257	26,269	327,957	351	0.11%
Carolyn Allen Park	402,206	235,433	35,167	38,083	710,889	97,869	13.77%
Price Park	5,464		478	517	6,459	0	0.00%
Bryan Park at Guilford County	900		79	85	1,064	4,500	422.97%
Bryan Park Golf & BEC	280,126	35,762	24,493	26,524	366,905	47,781	13.02%
Bryan Park Operations	567,902		49,655	53,772	671,328	31,551	4.70%
	22,027,451	2,767,868	1,752,876	2,085,666	28,633,861	3,634,848	12.69%
- - - - Enterprise Funds - - - -							
Cemetery Operations	614,684		53,745	58,201	726,630	386,511	53.19%
Total	22,642,135	2,767,868	1,806,621	2,143,867	29,360,491	4,021,359	13.70%

Program Evaluation Instructions

During the Accreditation process, the method for program evaluations has been updated. There are two forms that are to be used to evaluate programs on a consistent basis.

STAFF EVALUATION:

- **Purpose:** to reviews the program's overall effectiveness and operating procedures including areas which need improvement and those that are currently successful.
- **When:** Beginning January 3, 2006, programmers will complete a staff evaluation form for each program on a two year cycle or more often as needed depending on the nature of the program.
- **How:** The form is available on-line in the P&R shared folders in the programs folder under program evaluations. Blank hard copies of the form can also be used.
- **Where it goes:** This evaluation should be completed, saved to your computer, and then emailed to your supervisor, your division head and Heather Ulrich.

PARTICIPANT EVALUATION:

- **Purpose:** to utilize participant feedback to improve programs and to ensure that the program meets its intended objectives
- **When:** Beginning January 3, 2006, programmers will ask participants to complete the form at the end of each program cycle. The data is compiled for future review. Participant summative evaluations are analyzed every two years or more often as needed. Please feel free to add program specific questions to the participant evaluation to better assess your program.
- **How:** The form is available on-line in the P&R shared folders in the programs folder under program evaluations. Blank hard copies of the form can also be used.
- **Where it goes:** Currently the information should be tabulated, saved to your computer, and then emailed to your supervisor, your division head and Heather Ulrich.

Program Evaluation Instructions

During the Accreditation process, the method for program evaluations has been updated. There are two forms that are to be used to evaluate programs on a consistent basis.

STAFF EVALUATION:

- **Purpose:** to reviews the program's overall effectiveness and operating procedures including areas which need improvement and those that are currently successful.
- **When:** Beginning January 3, 2006, programmers will complete a staff evaluation form for each program on a two year cycle or more often as needed depending on the nature of the program.
- **How:** The form is available on-line in the P&R shared folders in the programs folder under program evaluations. Blank hard copies of the form can also be used.
- **Where it goes:** This evaluation should be completed, saved to your computer, and then emailed to your supervisor, your division head and Heather Ulrich.

PARTICIPANT EVALUATION:

- **Purpose:** to utilize participant feedback to improve programs and to ensure that the program meets its intended objectives
- **When:** Beginning January 3, 2006, programmers will ask participants to complete the form at the end of each program cycle. The data is compiled for future review. Participant summative evaluations are analyzed every two years or more often as needed. Please feel free to add program specific questions to the participant evaluation to better assess your program.
- **How:** The form is available on-line in the P&R shared folders in the programs folder under program evaluations. Blank hard copies of the form can also be used.
- **Where it goes:** Currently the information should be tabulated, saved to your computer, and then emailed to your supervisor, your division head and Heather Ulrich.

Program Evaluation Instructions

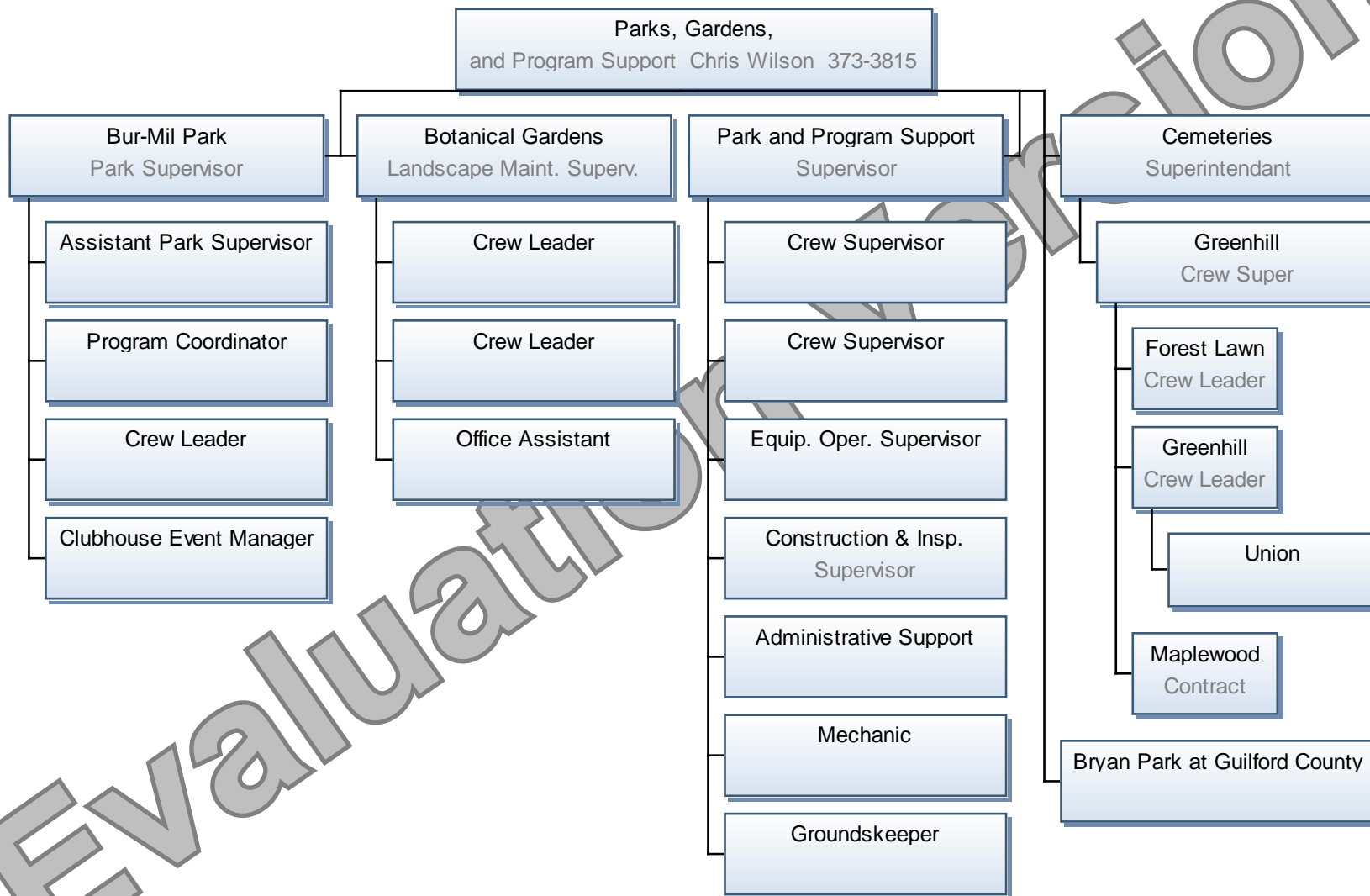
During the Accreditation process, the method for program evaluations has been updated. There are two forms that are to be used to evaluate programs on a consistent basis.

STAFF EVALUATION:

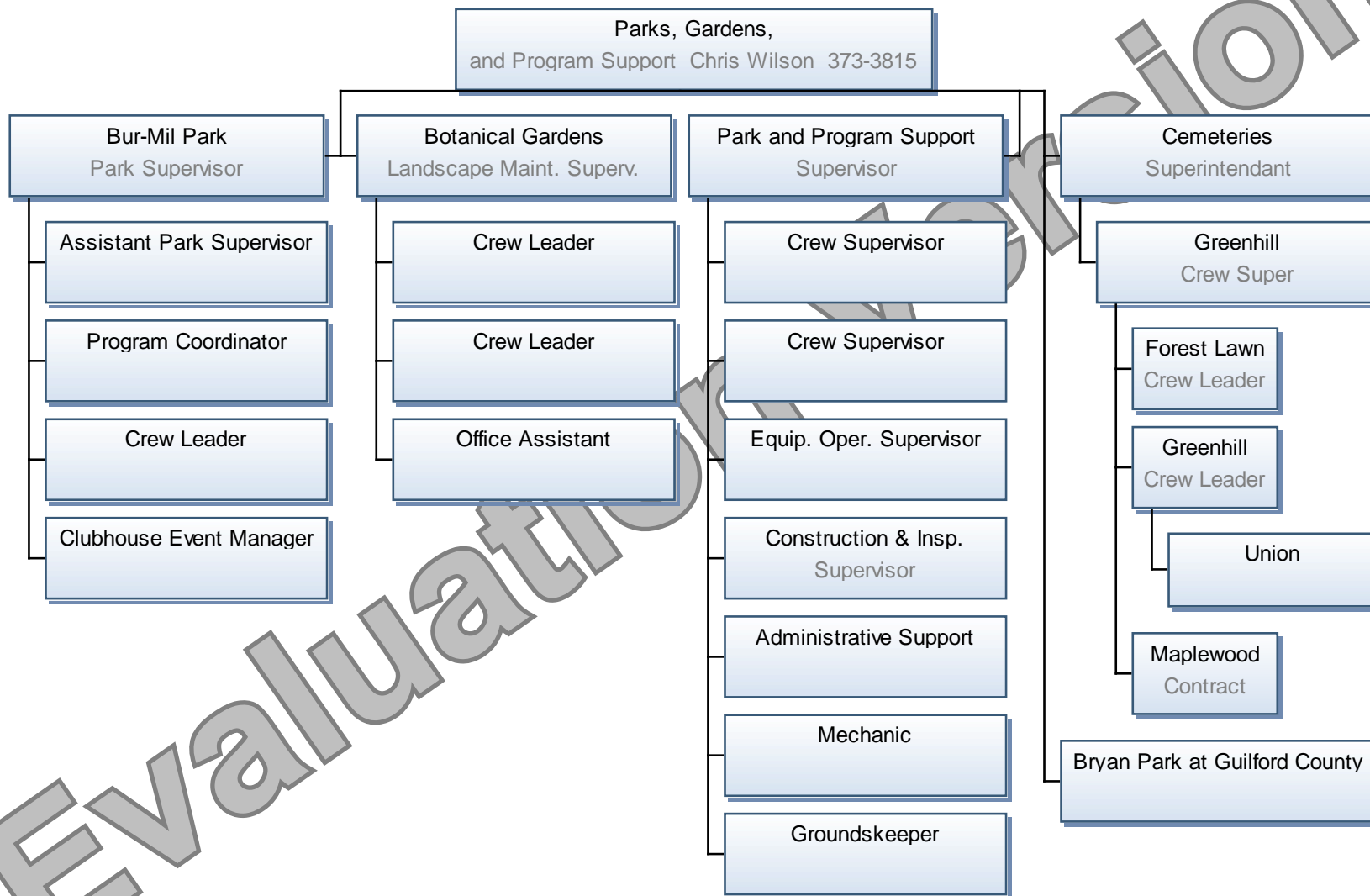
- **Purpose:** to reviews the program's overall effectiveness and operating procedures including areas which need improvement and those that are currently successful.
- **When:** Beginning January 3, 2006, programmers will complete a staff evaluation form for each program on a two year cycle or more often as needed depending on the nature of the program.
- **How:** The form is available on-line in the P&R shared folders in the programs folder under program evaluations. Blank hard copies of the form can also be used.
- **Where it goes:** This evaluation should be completed, saved to your computer, and then emailed to your supervisor, your division head and Heather Ulrich.

PARTICIPANT EVALUATION:

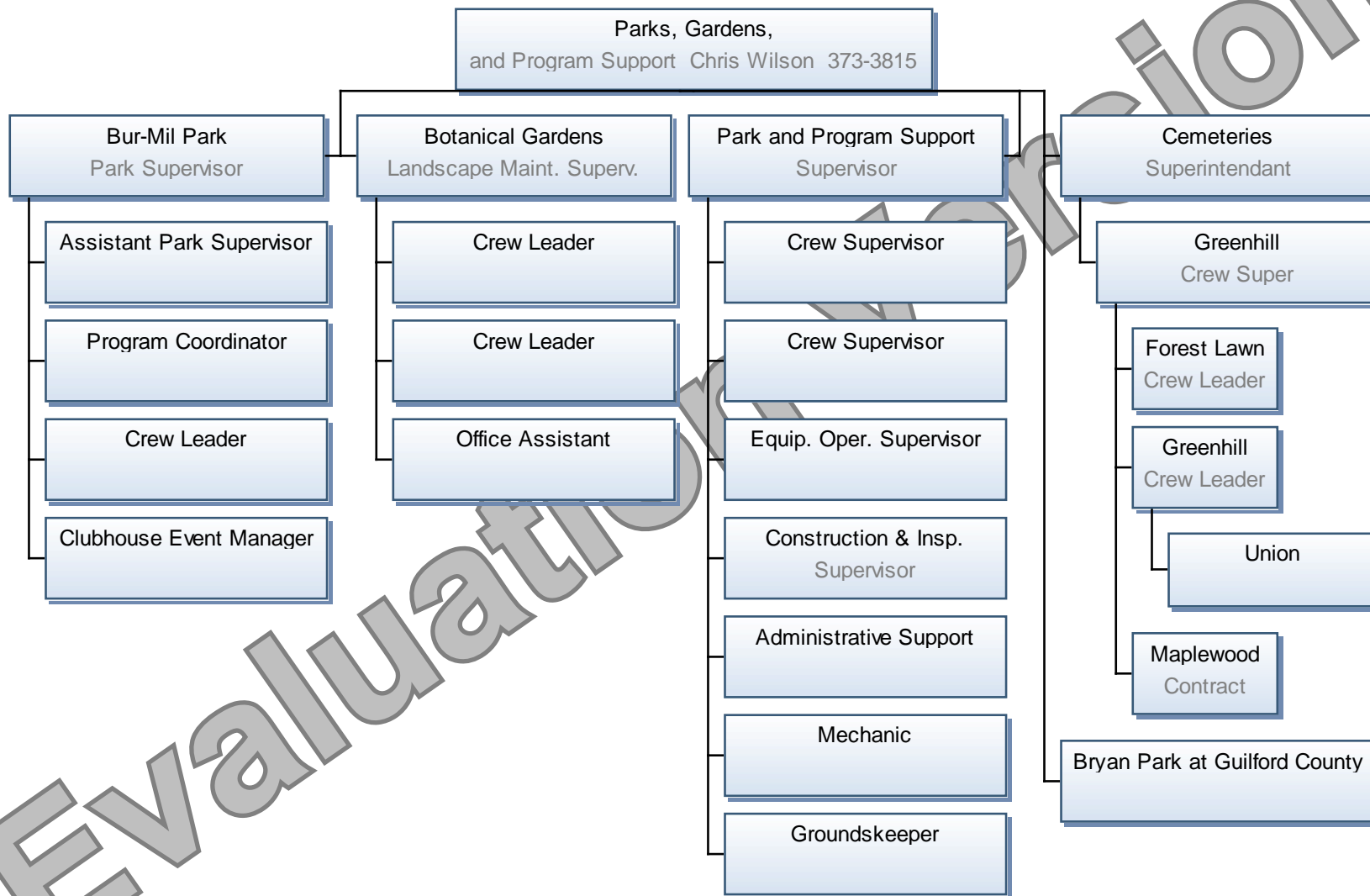
- **Purpose:** to utilize participant feedback to improve programs and to ensure that the program meets its intended objectives
- **When:** Beginning January 3, 2006, programmers will ask participants to complete the form at the end of each program cycle. The data is compiled for future review. Participant summative evaluations are analyzed every two years or more often as needed. Please feel free to add program specific questions to the participant evaluation to better assess your program.
- **How:** The form is available on-line in the P&R shared folders in the programs folder under program evaluations. Blank hard copies of the form can also be used.
- **Where it goes:** Currently the information should be tabulated, saved to your computer, and then emailed to your supervisor, your division head and Heather Ulrich.



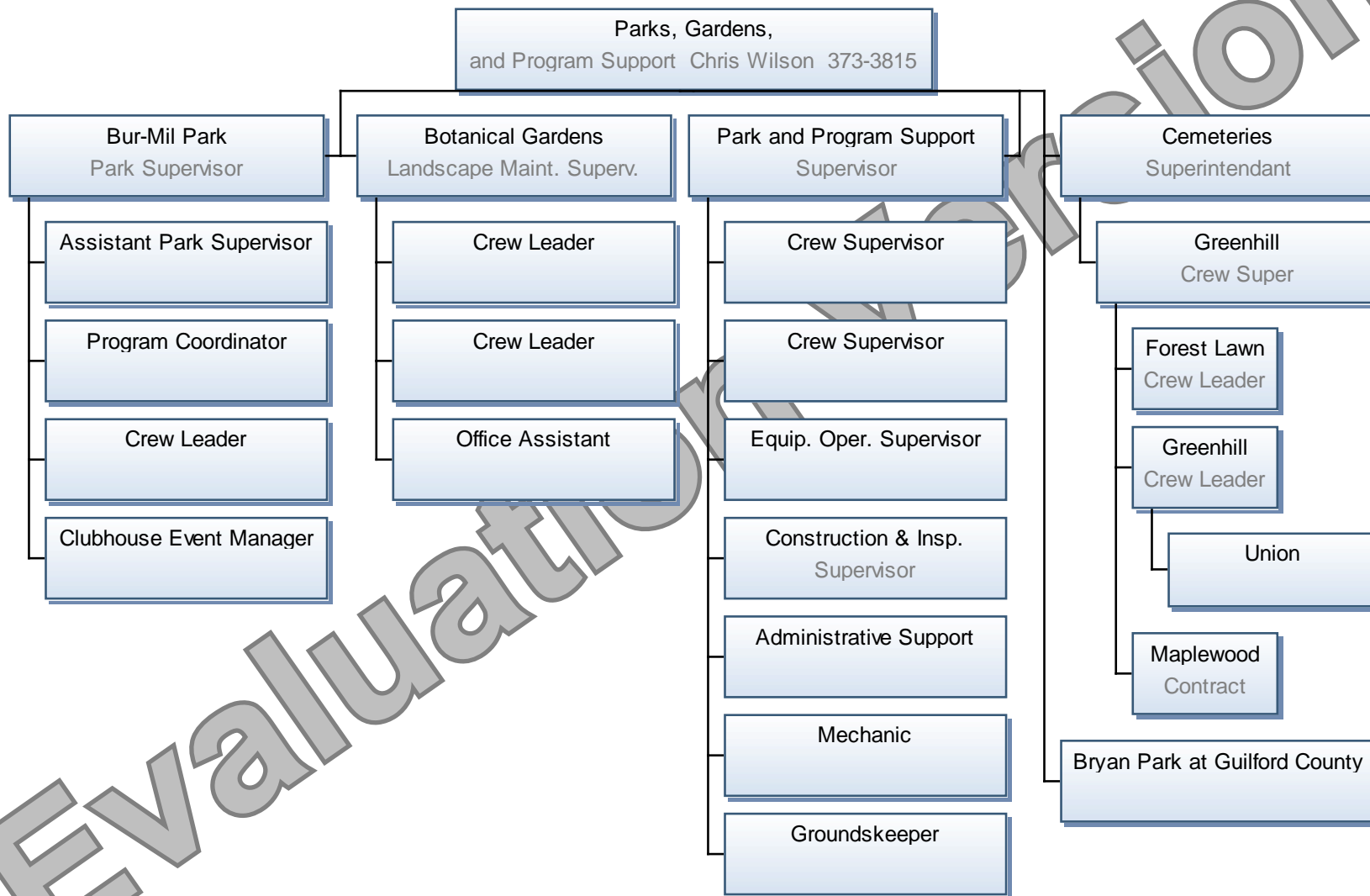
Evaluating



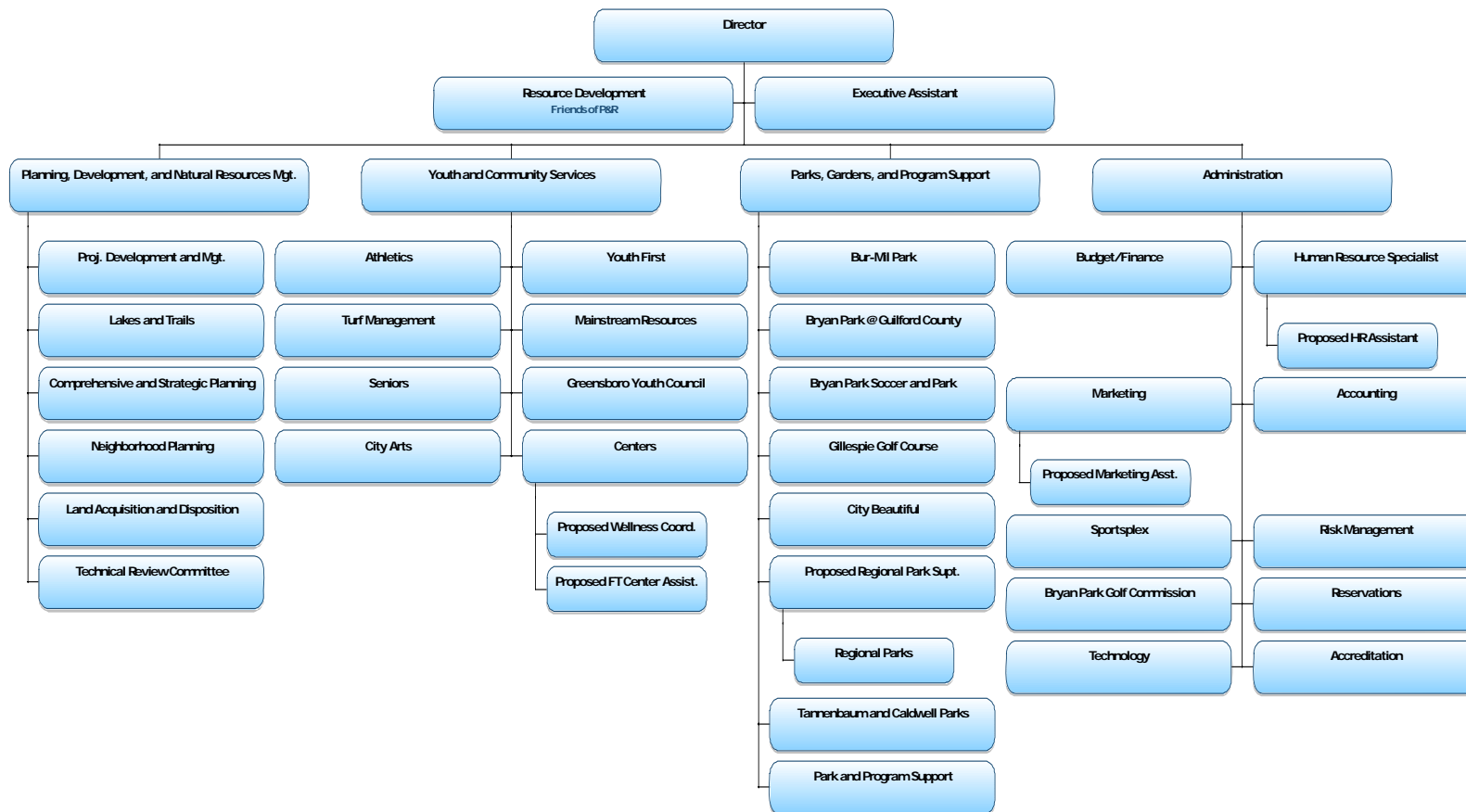
Evaluation Division



Evaluating Division



Evaluation Division



Department Director

Division 1 Administrative Services
--

Budget & Finance Safety Resource Development Marketing Accreditation Human Resources Accounts

Division 2 Athletics

Recreation Centers Sportsplex Athletic Programs Golf Courses

Division 3 Planning/Project Development

Long Range Planning Project Development Design Project Management Construction Trails Planning and Development Playgrounds Maintenance and Equipment

Division 4 Recreational Services
--

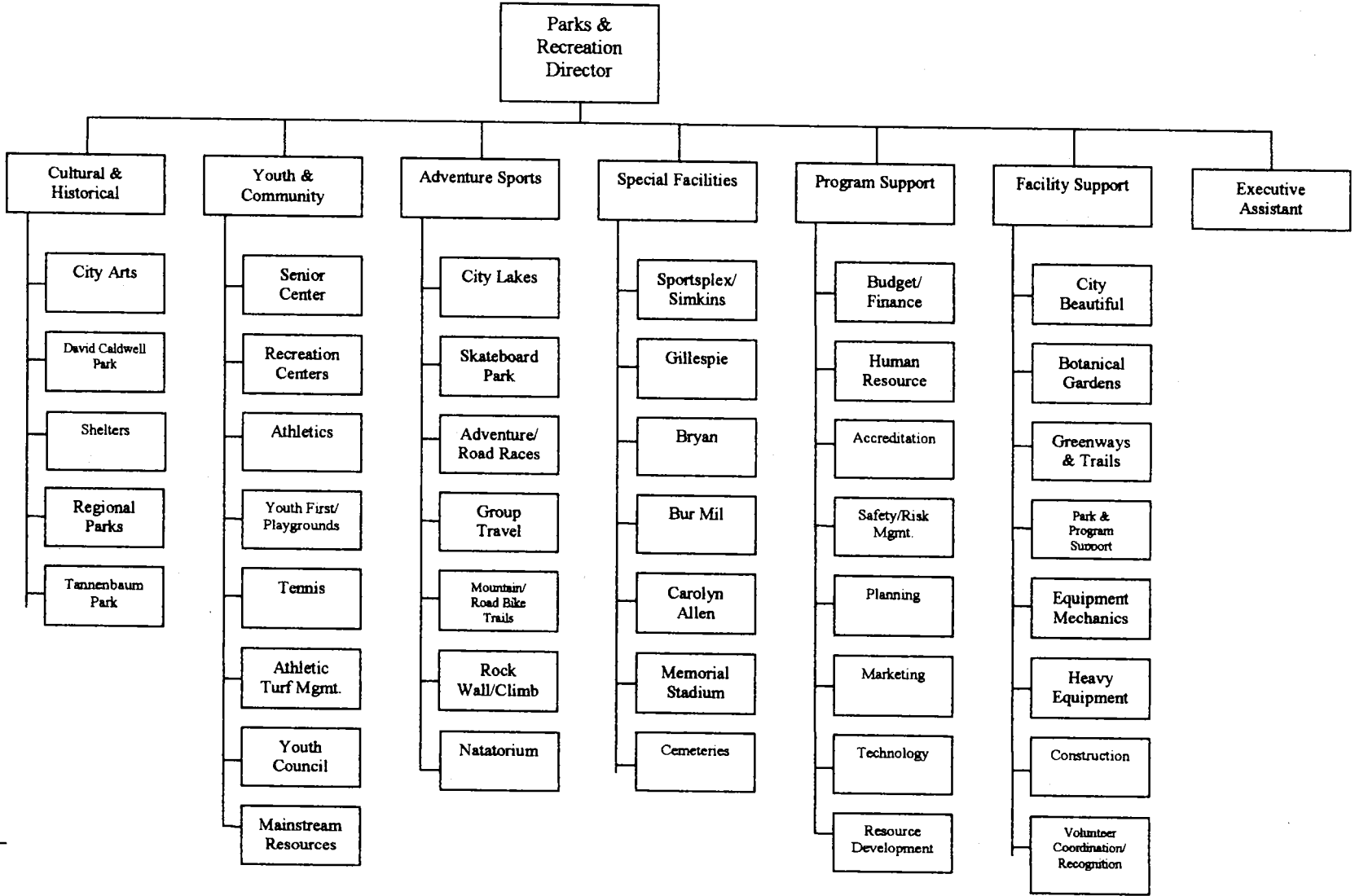
City Arts Cultural Programs Museums (tannenbaum) Youth Programs & GYC Senior Centers Travel Programs

Division 5 Parks & Gardens
--

City Beautiful Botanical Gardens Regional Parks Community Parks Neighborhood Parks Pocket Parks Cemeteries Bryan Park at Guilford County Lakes
--

This seems like a logical way to consider structuring.
Please feel free to call to discuss.

Recommended Org Chart



Parks & Recreation Study 2006 City of Greensboro, NC

Please insert the name of your local government in all of the blue spaces.

		Greensboro
Population		238,440 (2005)
FY 2006/2007 Adopted General Fund Budget		\$223,376,447
FY 2006/2007 Parks & Rec Adopted Budget		\$22,052,614
Total Number of FTE		3,056.723
Total Number of P&R FTE		296.360
Number of P&R Programs Offered		385
Please list the number of developed and undeveloped park and recreation land acreage owned by the local government.		
Developed P&R Land Acreage Owned		4001.0 Acres
Undeveloped P&R Land Acreage Owned		248.0 Acres
Total P&R Land Acreage Owned		4249 Acres
Drainage way & Open Space dedicated to the local government during the development process		1295 Acres

Terminology

Parks & Recreation- Refers to leisure opportunities obtained through the preservation of open space, park settings, recreational facilities, and programs designed for citizens. The benefits of leisure services are especially designed to meet the physical, mental, cultural, and social needs of

For each of the Park Areas listed, please give the number owned by the local government and average acreage.				
DEFINITIONS:				
Regional Parks = servicing several communities or multicounty region				
Municipal/ County Park = serving one municipality or one county				
Community Park = servicing an identifiable group of neighborhoods				
Neighborhood Park = servicing several small clusters of residential areas				
Mini-Park = servicing a limited number of streets in a neighborhood				
Passive Downtown Mall Park = servicing a downtown mall area				
Park Area	Number Owned		Total Acreage	
		Greensboro		Greensboro
Regional Park		5		833
Municipal/ County Park		1*		277
Community Parks		22		615
Neighborhood Parks		45		464
Mini-Parks		35		77
Passive Downtown Mall Parks		0		0

* County owned/ City Managed

School Parks	Number Owned		Number Owned by School, Leased to P&R	
		Greensboro		Greensboro
School Parks		0		16*

* school/ park joint use agreement

Facilities
For each of the following types of facilities listed below, please provide the number owned by the local government and operated by Parks & Recreation. Some facilities may need to be seperated into several categories- Indoor Facilities, Outdoor Facilities, Cultural Facilities, Fields/Courts, Golf Courses, Aquatic Resources, Overnight Resources, Contracted Operations
DEFINITIONS:
Indoor Facility Types- these include- aerobic studios, equestrian centers, in-line hockey rinks, recreation/community centers with gymnasiums and without, senior citizens centers, indoor tracks, permanent climbing walls, weight rooms, etc.
Outdoor Facility Types- these include- concession stands, equestrian areas, ice skating rinks, picnic shelters, playground/totlots, permanent climbing walls, rope courses, in-line hockey rinks, skateboard parks, outdoor tracks, dog parks, etc.
Cultural Facility Types- these include- amphitheaters, art centers, auditoriums, historic or cultural centers (indoor or outdoor), stage areas, zoological areas, etc.
Field/ Courts- these include- single-use fields (basketball, baseball, volleyball, etc), multi-use fields, indoor/ outdoor recreation courts, etc.
Golf Courses- these include driving ranges, miniature courses, 9-hole, 18-hole, etc.

Trail/Greenway Type- these include the mileage for both paved and unpaved trails, greenways, designated water trails for canoes, etc.
Aquatic Resources- these include- spraygrounds, pools (indoor and outdoor), waterslides, wave pools, boat launching facilities, canoe access, fishing piers, dry storage units, beach access, boat slips, beaches, etc.
Overnight Resources- these include- cabins, camp sites (group and primitive), RV/Trailer Campsites with and w/out hookups, etc.
Contracted Operations- these include facilities that the local government owns but are managed or operated through a contractual or partnership agreement

Indoor Facility Type	Number Owned	
		Greensboro
Aerobic Studios		0
Equestrian Centers		0
In-Line Hockey Rinks		1
Recreation Centers w/Gymnasiums		13
Gymnasiums		1
Senior Citizens Centers		1
Walking, Jogging or Running Tracks		0
Climbing Walls (permanent)		0
Weight Rooms		3

Others: Please List		
---------------------	--	--

Outdoor Facility Type	Number Owned	
		Greensboro
Concession Stands		20
Disc/Frisbee Golf Courses		1
Equestrian Areas		0
Ice Skating Rinks		1
Picnic Shelters		40
Playgrounds/ Totlots		100
Rope Courses		0
Climbing Walls (permanent)		0
In-Line Hockey Rink		0
Walking, Jogging or Running Tracks		0
Skateboard Parks		0
Dog Parks		1
Others: Please List		

Cultural Facility Type	Number Owned	
		Greensboro
Amphitheaters		1
Arts Centers		1
Auditoriums		0
Historic or Cultural Centers (indoor)		3
Historic or Cultural Centers (outdoor)		2
Libraries		0

Museums		0
Stage Areas		2
Zoological Areas		0
Others: Please List		

Field/ Court Type	Number Owned	
		Greensboro
Single-Use Fields & Courts		
Baseball/ Softball Fields		62
Basketball Courts (indoor)		24
Basketball Courts (outdoor)		22
Bocci		2
Football Fields		6
Handball/ Racquetball Courts (indoor)		0
Handball (outdoor)		0
Horseshoe Courts		33
Sand Volleyball Courts		5
Shuffleboard Courts (indoor)		0
(outdoor)		2
Soccer Fields (indoor)		3
Soccer Fields (outdoor)		28
Tennis Courts (indoor)		8
Tennis Courts (outdoor)		104
Multi-Use Fields & Courts		
Multi-Purpose Fields		78
Indoor Multiple Recreation Courts		131
Outdoor Multiple Recreation Courts		178

Others: Please List		
---------------------	--	--

Golf Courses	Number Owned	
		Greensboro
Driving Ranges		3
Courses		3

Trails/Greenways	Number Owned	
		Greensboro
Trail/Greenway in miles		75.74 miles

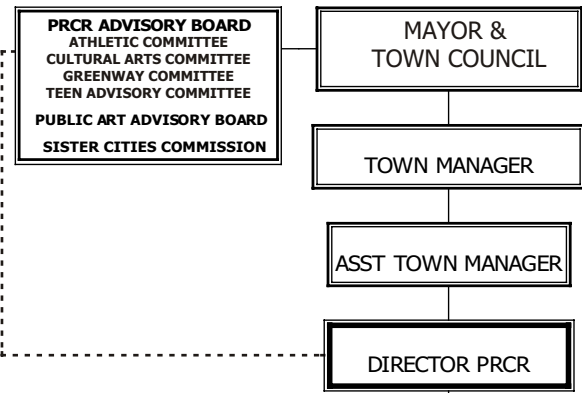
Aquatic Resources	Number Owned	
		Greensboro
Spraygrounds		0
Swimming Pools (indoor)		2
Swimming Pools (outdoor)		5
Therapy Pools		0
Waterslides		0
Wading/Kid Pools		0
Wave Pools		0
Boat Launching Facilities		5
Canoe Access		3
Fishing Piers		9
Open Boat Slips		0
Covered Boats Slips		0
Dry Storage Units		42
Mooring Buoys		0
Beach Access Facilities		0
Others: Please List		

Overnight Resources	Number Owned	
		Greensboro
Cabins		0
Campsites		88

Contracted Operations	Number Owned	
		Greensboro
Please List:		Golf Course (2), Golf Course Practice Facility (1), Ice Rink (1)

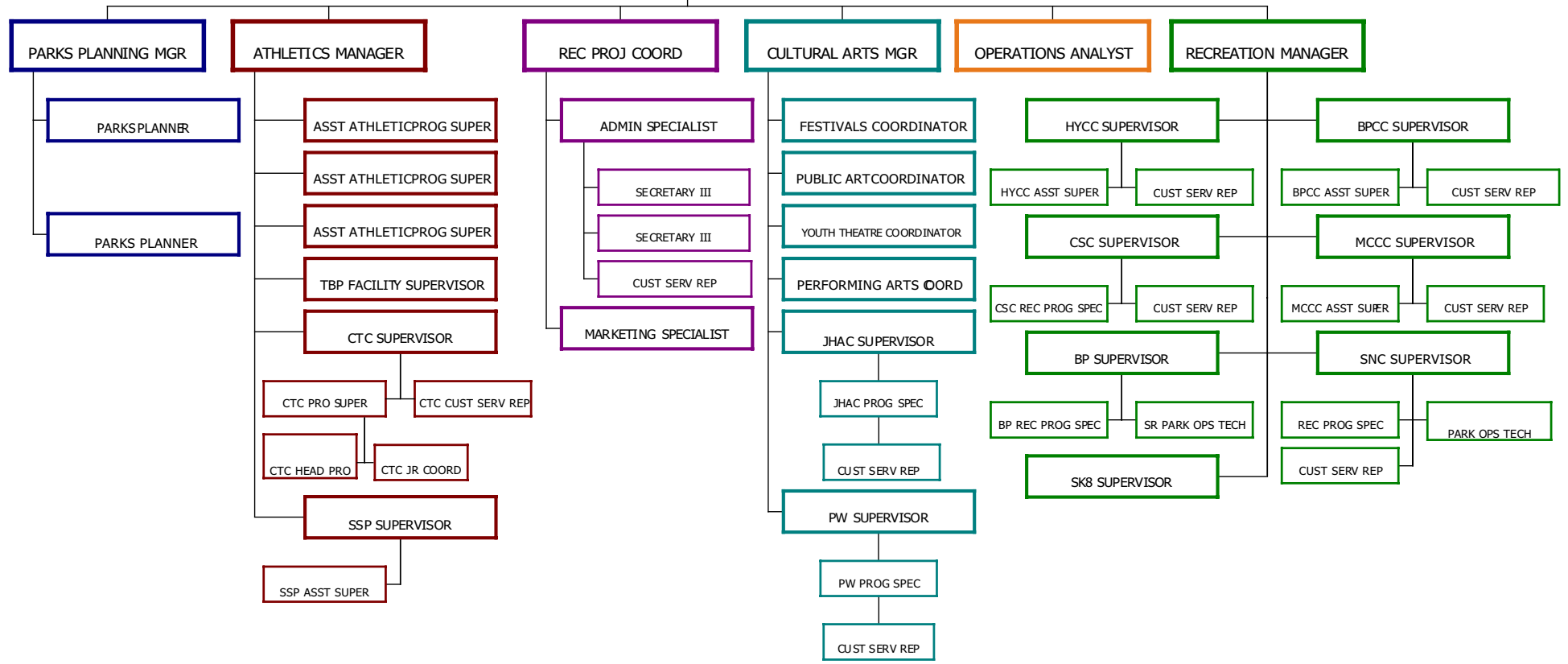
CARY PARKS, RECREATION & CULTURAL RESOURCES ORGANIZATIONAL CHART

Appendix Eight



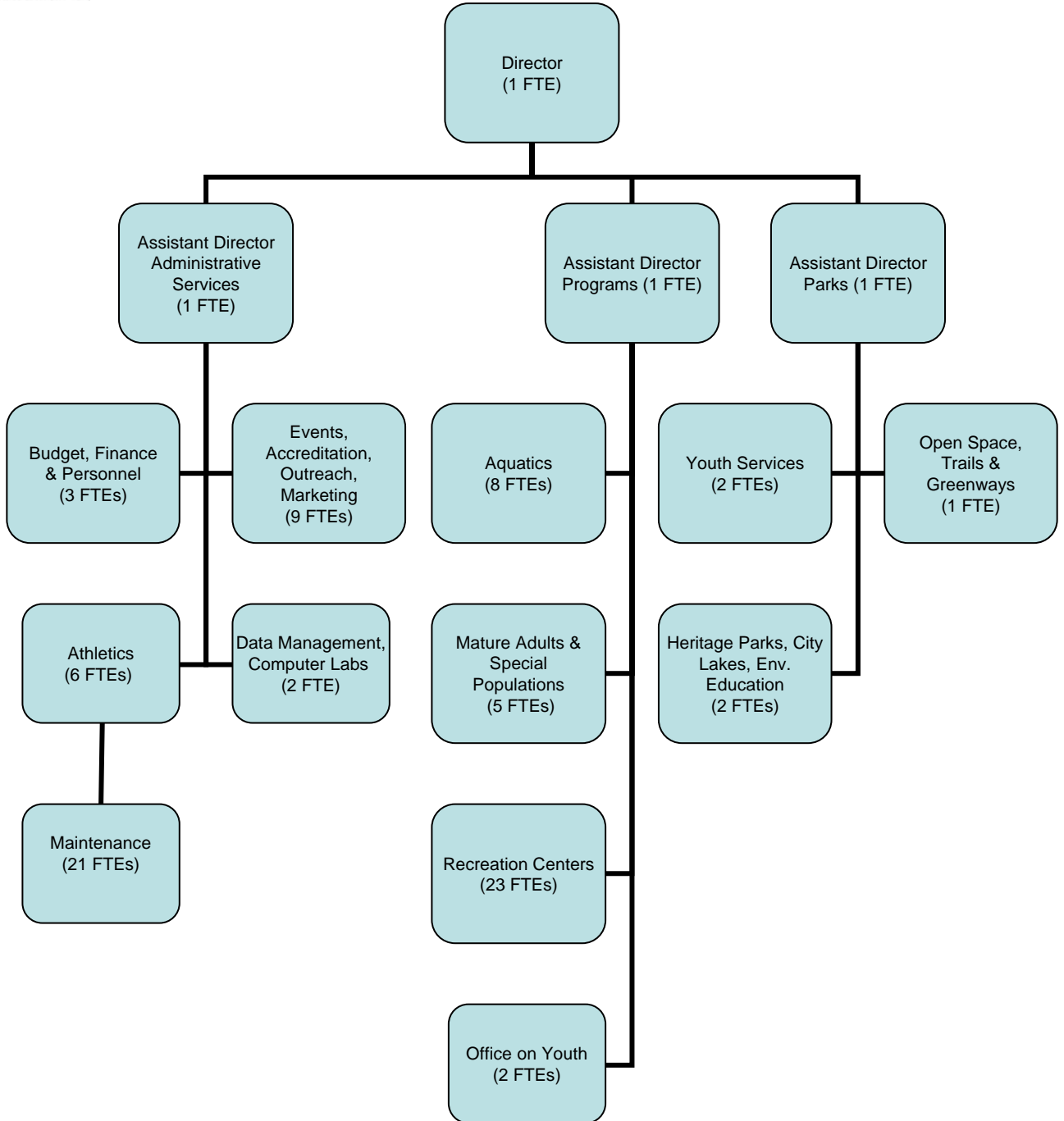
Key to Facility Acronyms

- BP = Fred G. Bond Metro Park
- BPCC = Bond Park Community Center
- HYCC = Herbert C. Young Community Center
- CSC = Cary Senior Center
- CTC = Cary Tennis Center
- JHAC = Jordan Hall Arts Center
- MCCC = Middle Creek Community Center
- PW = Page-Walker Arts & History Center
- SK8 = Sk8-Cary
- SNC = Stevens Nature Center at Hemlock Bluffs
- SSP = SAS Soccer Park
- TBP = Thomas Brooks Park



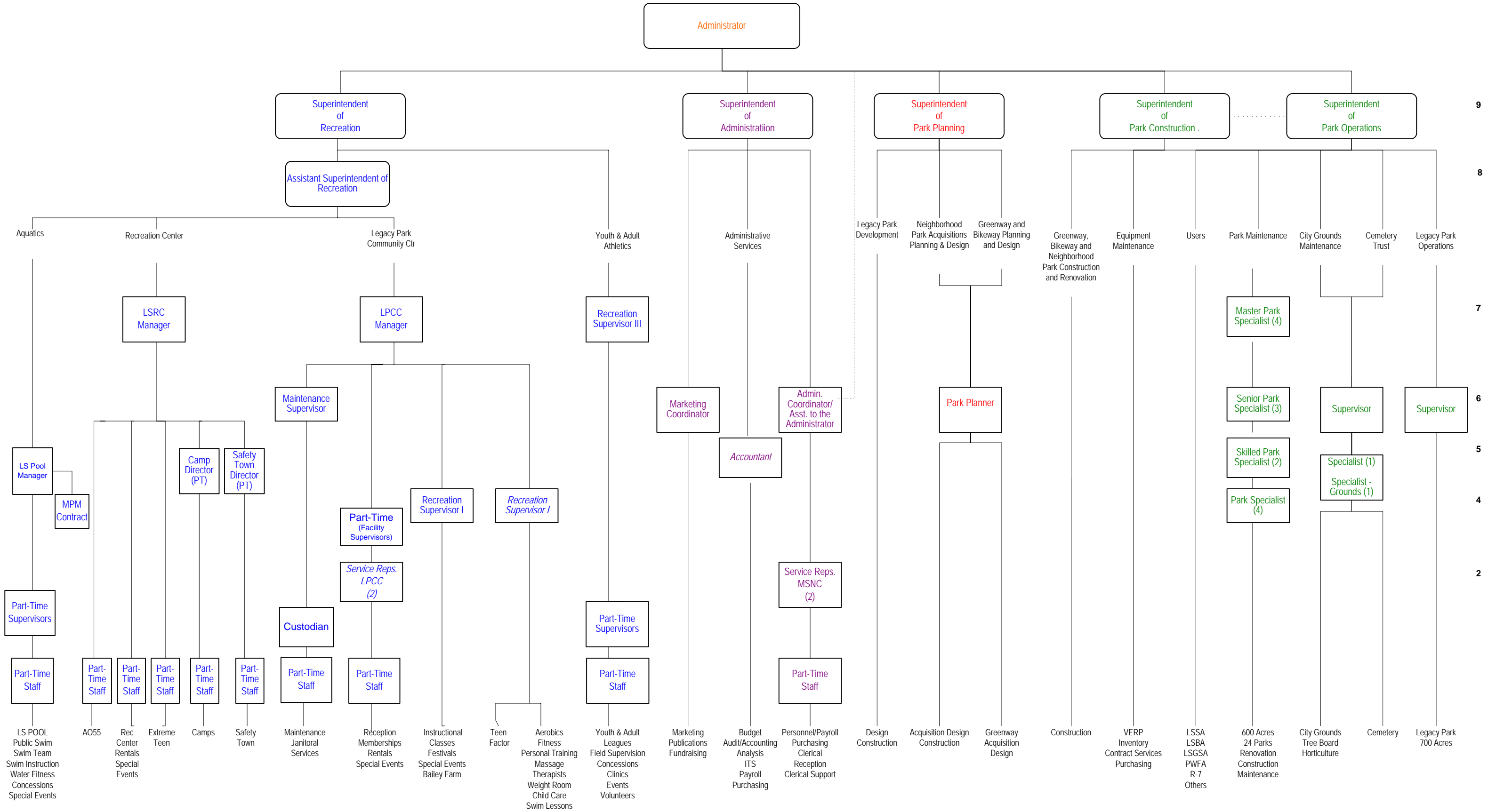


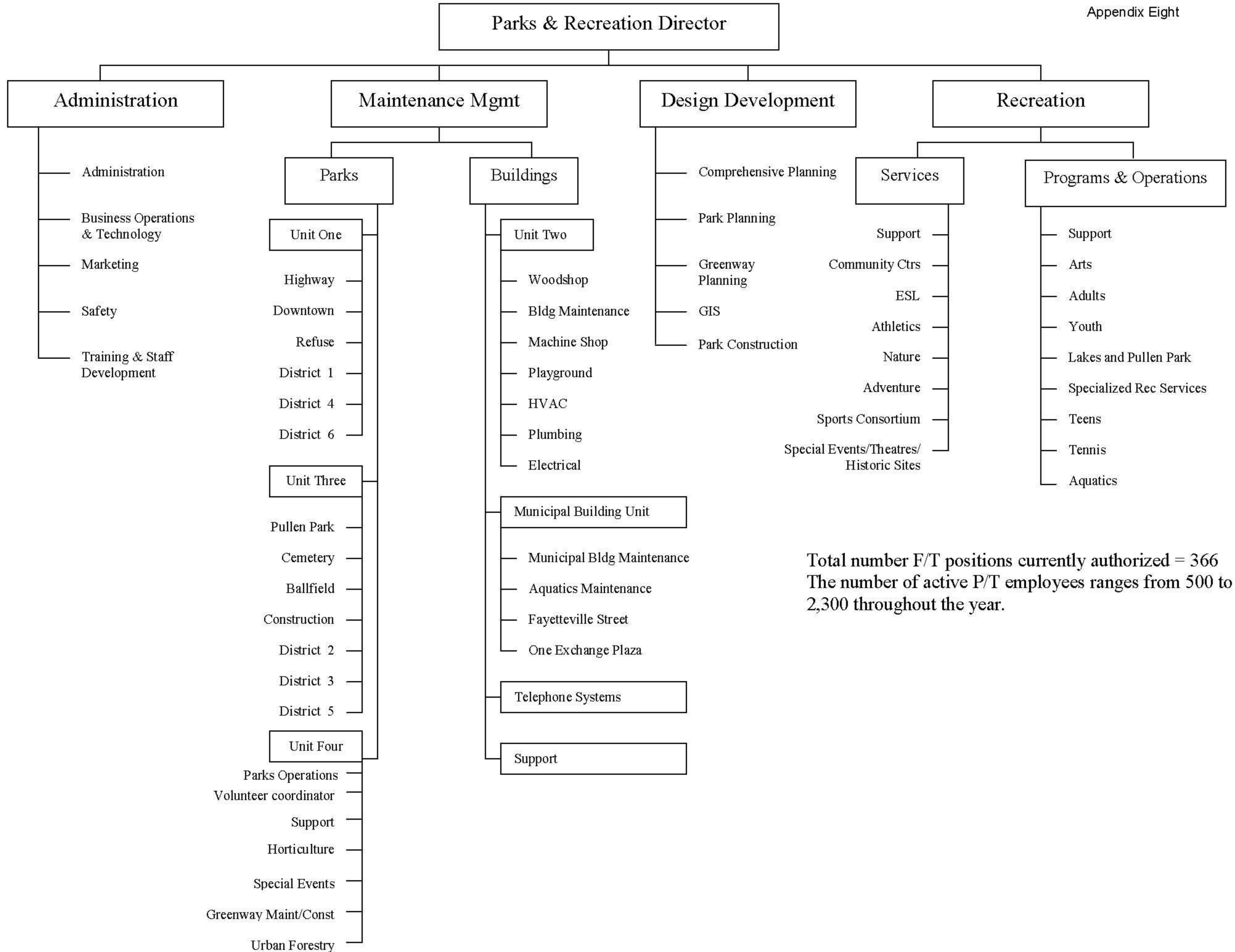
Parks and Recreation (88 FTEs)



Lee's Summit Parks and Recreation

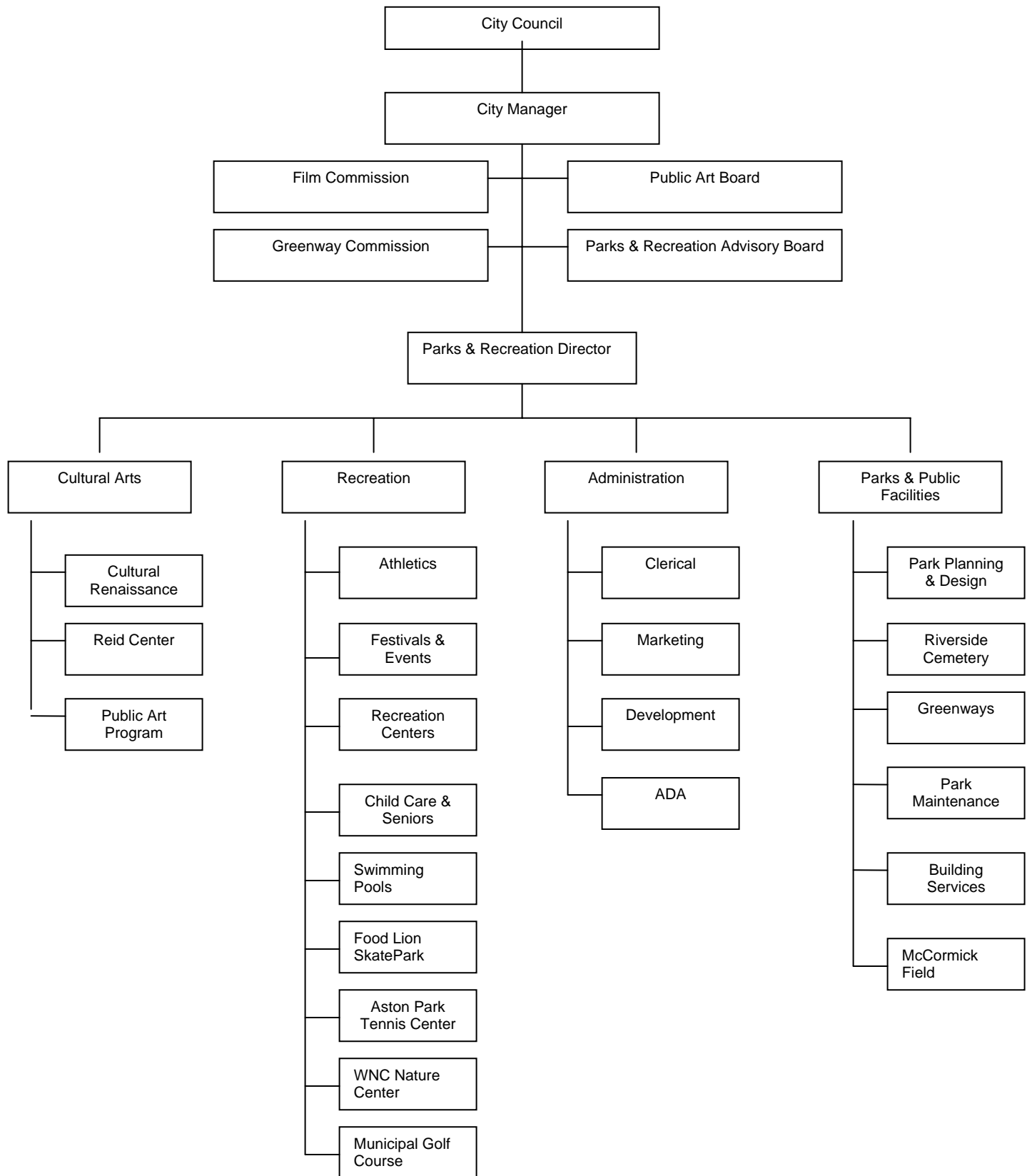
Organizational Chart (Current – May, 2006)





Total number F/T positions currently authorized = 366
The number of active P/T employees ranges from 500 to 2,300 throughout the year.

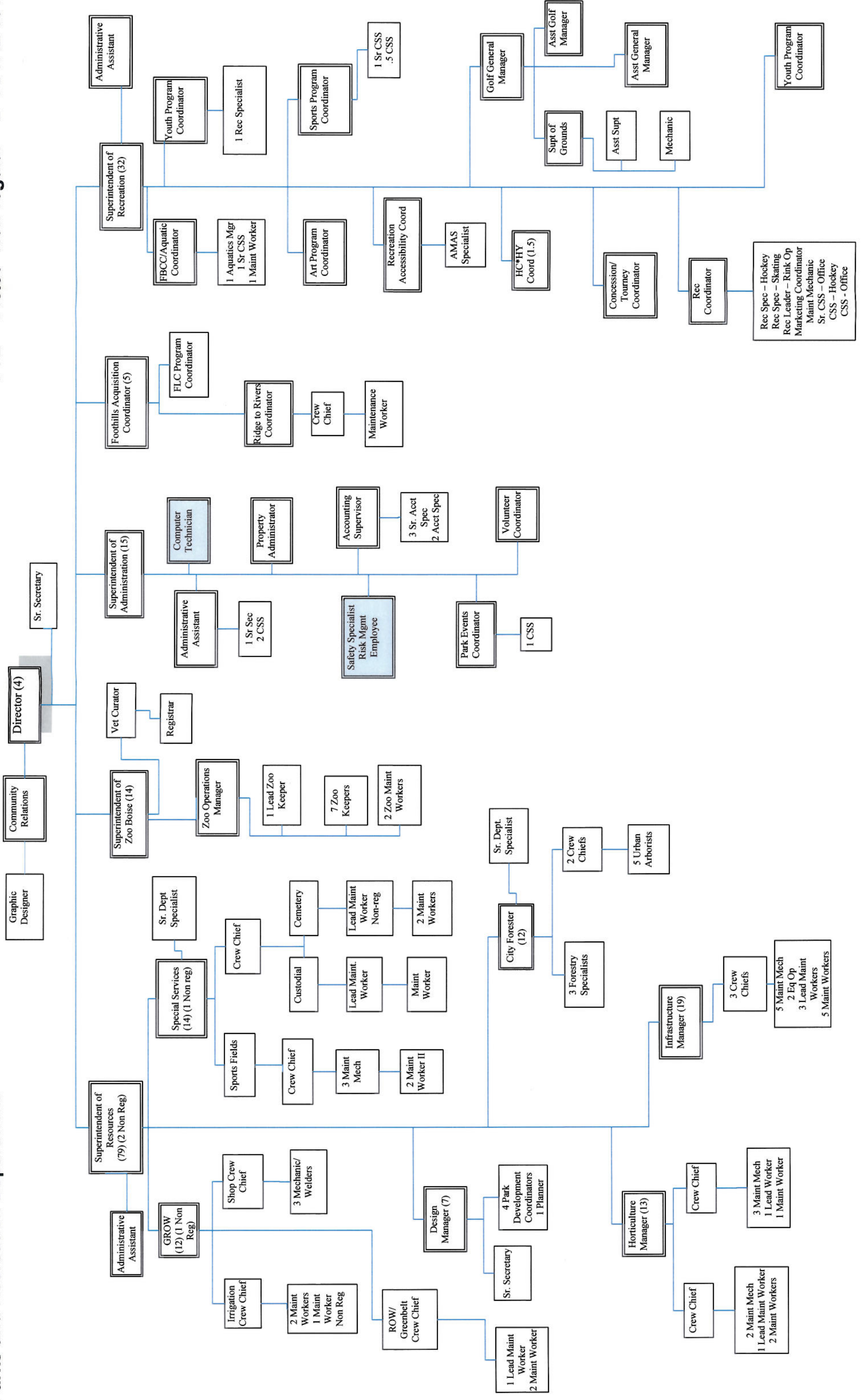
Asheville Parks and Recreation Department FY 06-07

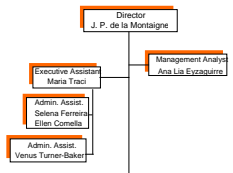


Parks and Recreation Department

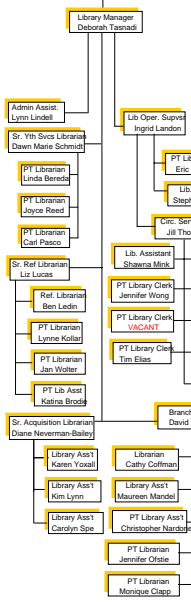
FTE = 149.00 Non-regular = 2 TOTAL 151.00

Boise, Idaho

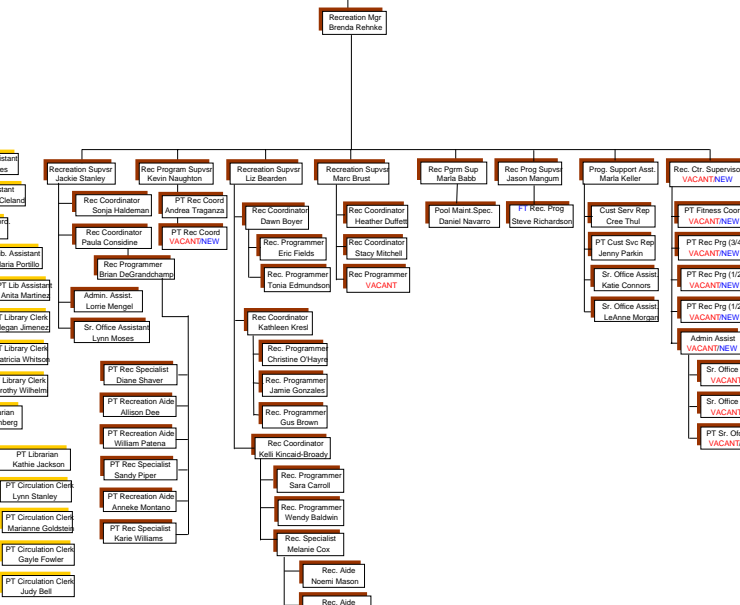




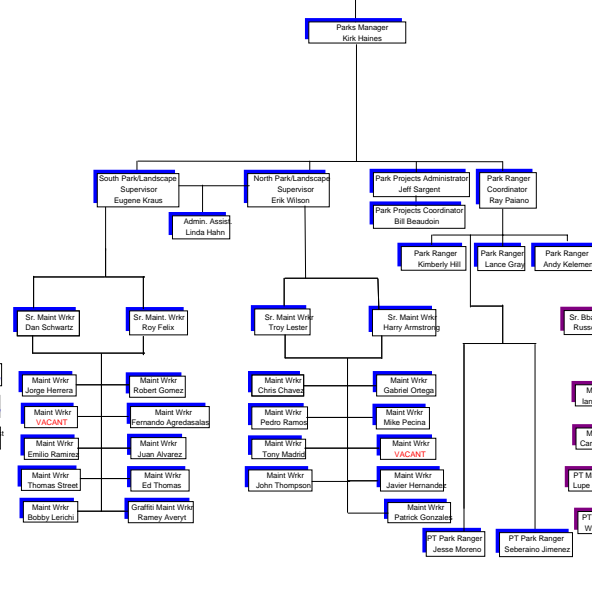
LIBRARY OPERATIONS



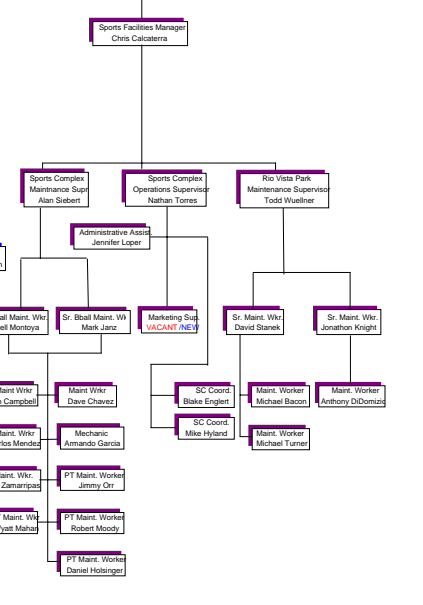
RECREATION PROGRAMS



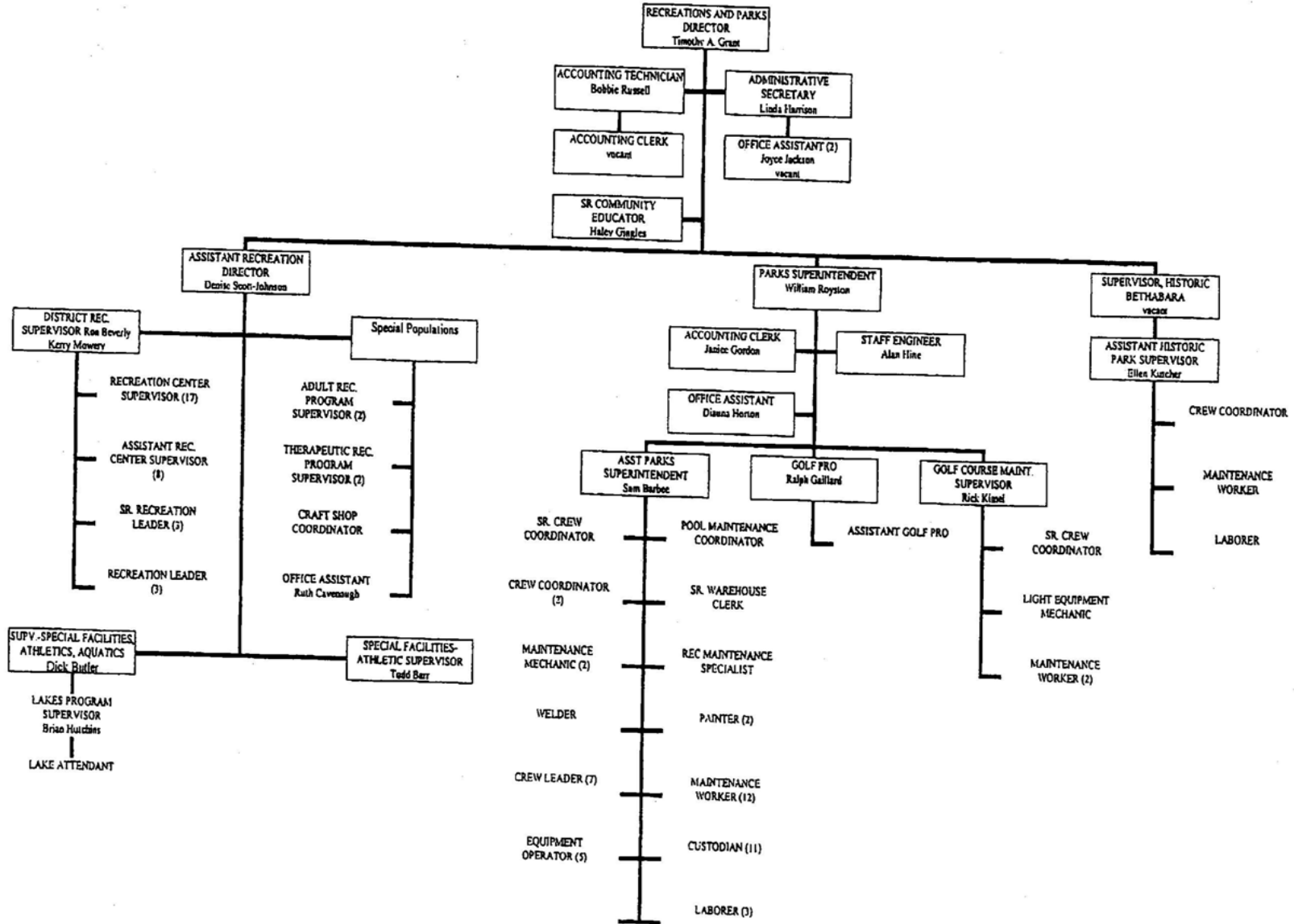
PARKS



SPORTS COMPLEXES



Recreation and Parks Organization Chart



Parks & Recreation Study 2006 City of Greensboro, NC

Please insert the name of your local government in all of the blue spaces.

	Cary	Durham	Asheville	Raleigh	Saint Paul	City of Lee's Summit	Peoria Arizona	Greensboro	Winston-Salem	Boise
Population	15,361 (July 1, 2006)	210,988 (FY07 Est.)	70,000	335,512	300,005	85, 000+	147,000	238,440 (2005)	195,536 (2005)	191,667
FY 2006/2007 Adopted General Fund Budget	\$94,941,109	\$342,608,422	\$ 116,936,971.00	\$315,787,516	\$166,824,455.00	\$60,991,951	\$109,816,346	\$223,376,447	\$154,897,100	\$133,607,724
FY 2006/2007 Parks & Rec Adopted Budget	\$8,980,107	\$7,952,890	\$10,541,444	\$34,413,763	\$23,203,241	\$5,601,767	\$21,735,732	\$22,052,614	\$9,275,970	\$16,710,329
P&R Budget as percentage of General Budget	9.46%	2.32%	9.01%	10.90%	13.91%	9.18%	19.79%	9.87%	5.99%	12.51%
Total Number of FTE	1,095.125	2,297.000	1,082.170	2,791.000	2600	657.77	1,146.460	3,056.723	2,562.050	1,144.360
Total Number of P&R FTE	54.250	88.000	154.910	366.000	532	38	122.860	296.360	183.400	148.830
Number of P&R Programs Offered	3,268	approx. 300		1648+ program (8540 sessions)	2250	415		385	N/A	362
Please list the number of developed and undeveloped park and recreation land acreage owned by the local government.										
Developed P&R Land Acreage Owned	650.6 Acres	1277 acres	913	4867.87 Acres	3452 Acres	511 acres	474	4001.0 Acres	1,424 Acres	1287.21
Undeveloped P&R Land Acreage Owned	1,150.0 Acres	583 acres	15	2094.13 Acres	671 Acres	572 acres	220	248.0 Acres	2,043 Acres	533.51
Total P&R Land Acreage Owned	1,800.6 Acres	1860 acres	928	8568.39 Acres	4123 Acres	1,083 acres	3155	4249 Acres	3,467 Acres	3964.85
Drainage way & Open Space dedicated to the local government during the development process	507.07 Acres	Not available.	0	1873 Acres (Easement)		0	2461	1295 Acres	N/A	2163.79

For each of the Park Areas listed, please give the number owned by the local government and average acreage.

Park Area	Number Owned									
	Cary	Durham	Asheville	Raleigh	Saint Paul	City of Lee's Summit	Peoria, Arizona	Greensboro	Winston-Salem	Boise
Regional Park		1	1		5	0	1	5	1	
Municipal/ County Park	1	0	13	8	5**	1	1	1*	10***	
Community Parks	4	21	24	23	9	13	4	22	20	
Neighborhood Parks	11		9	41	82	6	35	45	22	
Mini-Parks	4	41	5	15	63	1	3	35	4	
Other									21	
Passive Downtown Mall Parks		3	5	1	13	1		0	1	
	20	66	57	88	172	22	44	107	69	0

**County and State Parks

* County owned/ City Managed *** District Park

School Parks	Number Owned									
	Cary	Durham	Asheville	Raleigh	Saint Paul	City of Lee's Summit	Peoria	Greensboro	Winston-Salem	Boise
School Parks	2	0	0	6	5		0	0	10	

Outdoor Facility Type	Number Owned									
	Cary	Durham	Asheville	Raleigh	Saint Paul	City of Lee's Summit	Peoria	Greensboro	Winston-Salem	Boise
Concession Stands	6	2	15	6	18	6	7	20	4	3
Disc/Frisbee Golf Courses		2.5	1	2	1	0	0	1	0	1
Equestrian Areas		0	0		0	0	0	0	1	1
Ice Skating Rinks		0	0		16 hockey	0	2	1	1	0
Picnic Shelters	20	66	19	26	7	12 (2 more in construction)	89	40	51	0
Playgrounds/ Totlots	16	55	20	63	80	20	40	100	49	71
Rope Courses	1	1	0		0	0	0	0	0	0
Climbing Walls (permanent)		0	0		1	0	1	0	0	0
In-Line Hockey Rink		0	1	1	0	1	1	0	0	0
Walking, Jogging or Running Tracks		0		2	0	0	4	0	11	0
Skateboard Parks	1	0	1		2	2	1	0	0	3
Dog Parks	1	2	2	2	1	1	3	1	1	1
Others: Please List		N/A	1			Climbing Rocks(2) Walking/Nature Trails (14)			Soap Box Derby Track	1- BMX dirt jump park

Cultural Facility Type	Number Owned									
	Cary	Durham	Asheville	Raleigh	Saint Paul	City of Lee's Summit	Peoria	Greensboro	Winston-Salem	Boise
Amphitheaters	2	0	1	3	1	0 (1 in construction)	1	1	3	0
Arts Centers	1	0	1	2	0	0	2	1	2	0
Auditoriums	1	0	1	2	3	0	0	0	1	0
Historic or Cultural Centers (indoor)		2	0	3	0	0	1	3	3	0
Historic or Cultural Centers (outdoor)		2	0		0	0		2	2	1
Libraries		0	0		0	0	2	0	1	0
Museums		0	0		0	0	2	0	1	0
Stage Areas		0	2		0	0	1	2	3	1
Zoological Areas		0	1		1	0	0	0	0	1
Others: Please List		N/A			1 Conservatory and 1 Zoo					0
					1 sculpture park, 1 arboretum	1 (city owned/park operated)				

Field/ Court Type	Number Owned											
	Cary	Durham	Asheville	Raleigh	Saint Paul	City of Lee's Summit	Peoria	Greensboro	Winston-Salem	Boise		
Single-Use Fields & Courts												
Baseball/ Softball Fields	21	29*		26	35	30	(6 more in construction)	29	62	42	50	
Basketball Courts (indoor)			5	4	36	41		5	2	24	10	2
Basketball Courts (outdoor)	18		44.5	4	50	18		5	39	22	26	26
Bocci			0	0	2	2		0	2		4	0
Football Fields			2	1	1	see multi-purpose fields	(4 under construction)	0		6	1	9
Handball/ Racquetball Courts (indoor)			6	0		2		0	2	0	0	0
Handball (outdoor)			2	0	1	2		2	0	0	0	0
Horseshoe Courts			2	0	4	5 sites		11	2	33	24	4
Sand Volleyball Courts	10		1	4	8	2		2	11	5	5	6
Shuffleboard Courts (indoor)			0	0		0		0	0	0	1	0
Shuffleboard Courts (outdoor)			2	1		0		0	0	2	1	0
Soccer Fields (indoor)			0	0		0		0	0	3	2	0
Soccer Fields (outdoor)	17		15	6		3		8	0	28	43	44
Tennis Courts (indoor)			0	0		0		0	0	8	0	0

	Cary	Durham	Asheville	Raleigh	Saint Paul	City of Lee's Summit	Peoria	Greensboro	Winston-Salem	Boise
Tennis Courts (outdoor)	55	72	52	112	58	5 (+6 school managed)	24	104	114	76
Multi-Use Fields & Courts										
Multi-Purpose Fields				23	126	20	45	78		9
Indoor Multiple Recreation Courts	4	some are used as multiple use - none specifically designed as that	5	18 (gymnasiums)	see gymnasiums	9	0	131		2
Outdoor Multiple Recreation Courts			4			0	0	178		0
Others: Please List			0	26						
Golf Courses										
	Number Owned									
	Cary	Durham	Asheville	Raleigh	Saint Paul	City of Lee's Summit	Peoria	Greensboro	Winston-Salem	Boise
Driving Ranges		0	0		2	0	*6	3	2	1
Courses		0	1		4	0	*6	3	2	1
							*not city owned			
Trails/Greenways										
	Number Owned									
	Cary	Durham	Asheville	Raleigh	Saint Paul	City of Lee's Summit	Peoria	Greensboro	Winston-Salem	Boise
Trail/Greenway in miles	34.6 miles	17 miles	7.5	54.65	miles hard surface/of	41.0 miles	27	75.74 miles	18	122.5

Aquatic Resources		Number Owned								
	Cary	Durham	Asheville	Raleigh	Saint Paul	City of Lee's Summit	Peoria	Greensboro	Winston-Salem	Boise
Spraygrounds		4	0	7	1 in construction	0	1	0	0	1
Swimming Pools (indoor)		2	0	1 (+ 1 bubble)	1	1	0	2	0	1
Swimming Pools (outdoor)		3	3	7	2	1	3	5	8	6
Therapy Pools		0	0	1	0	0	0	0	0	0
Waterslides		0	0		2 in construction	1	3	0	0	3
Wading/Kid Pools		0	0	7	2	2	3	0	7	2
Wave Pools		0	0		0	0	0	0	0	0
Boat Launching Facilities	1	2	0	2	5	0	0	5	1	0
Canoe Access	1	1	1	5	5	0	0	3	1	5+
Fishing Piers	1	1	3	6	5	0	2	9	1	12
Open Boat Slips		0	0		315	0	0	0	24	0
Covered Boats Slips		0	0		32	0	0	0	0	0
Dry Storage Units		0	0	43		0	0	42	0	0
Mooring Buoys		0	0		3	0	0	0	0	0
Beach Access Facilities		0	0		1 lake beach, several miles of	0	0	0	0	0
Others: Please List		N/A		114	accessible river bank				2- Water Playgrounds	7- Fishing Areas
Overnight Resources		Number Owned								
	Cary	Durham	Asheville	Raleigh	Saint Paul	City of Lee's Summit	Peoria	Greensboro	Winston-Salem	Boise
Cabins		0	0	1	0	0	0	0	0	0
Campsites		10	0	5	0	0	0	88	0	0

Contracted Operations	Number Owned									
	Cary	Durham	Asheville	Raleigh	Saint Paul	City of Lee's Summit	Peoria	Greensboro	Winston-Salem	Boise
Please List:	Amphitheatre	N/A	Concession operations (4)		ComoTown Amusement Center, Blackbear Crossing Concessions and Banquet Center, Como Visitors Center Concessions and Banquet Facilities, Watergate Marina, Lower Harbor Boat Slips by Saint Paul Yacht Club	0		Golf Course (2), Golf Course Practice Facility (1), Ice Rink (1)	Golf Course (1), Tennis Center (1)	

Total Acreage

	Cary	Durham	Asheville	Raleigh	Saint Paul	City of Lee's Summit	Peoria, Arizona	Greensboro	Winston-Salem	Boise
Regional Park		398	45		3191		1	833	1455	89.5
Municipal/ County Park	283.25	0	638.5	2267.18		704	1	277	1007***	
Community Parks	405.15	659	202.5	1229.74	346	255	4	615	400	173.5
Neighborhood Parks	137.85		27	588.36	395	53	35	464	274	295.6
Mini-Parks	4.26	220	8	13.27	175	0.25	3	77	8.7	9.5
Other									208.7	0
Passive Downtown Mall Parks		2	9	4.37	16	0.8		0	2.4	0

Number Owned by School, Leased to P&R

	Cary	Durham	Asheville	Raleigh	Saint Paul	City of Lee's Summit	Peoria	Greensboro	Winston-Salem
School Parks	3	0	6	3	4		27	16*	30

* school/ park joint use agreement

* school/ park joint use agreement

Appendix Ten

